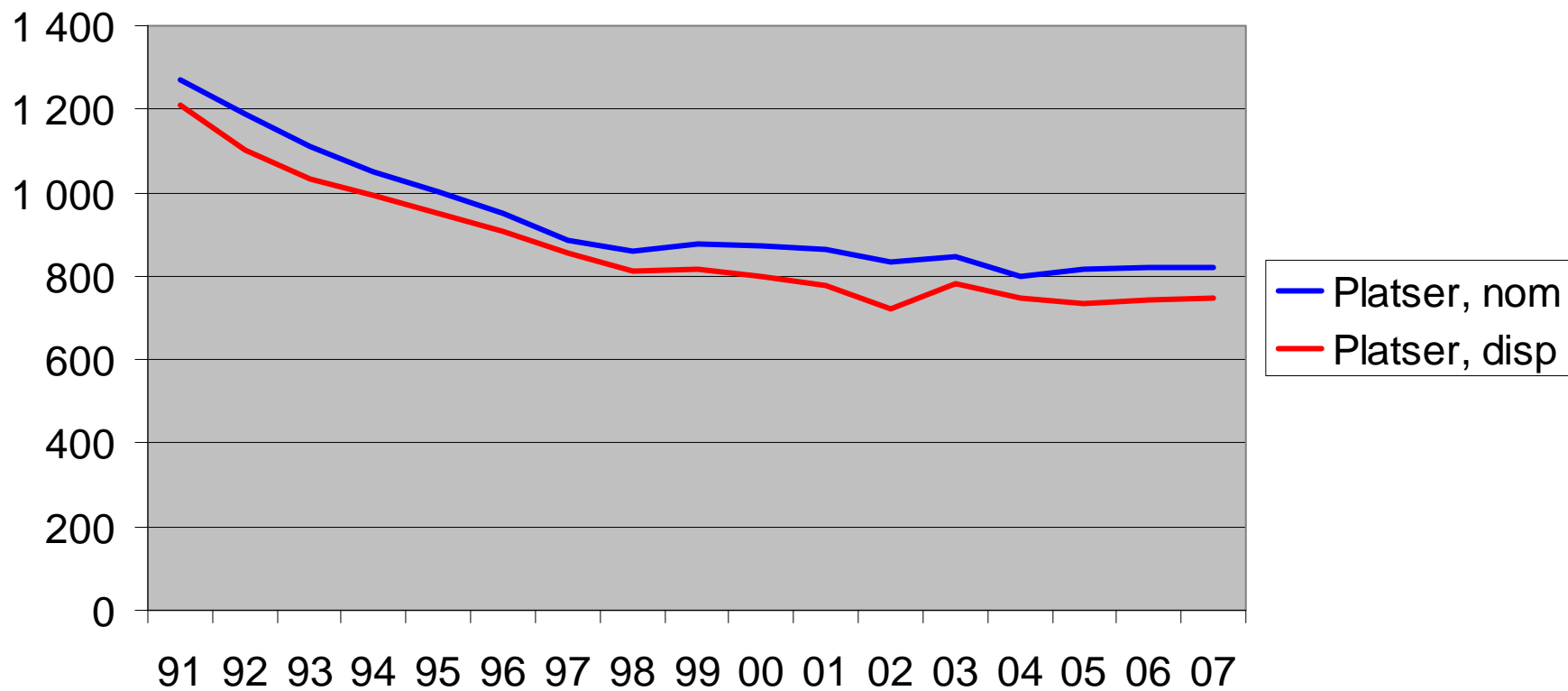


2008

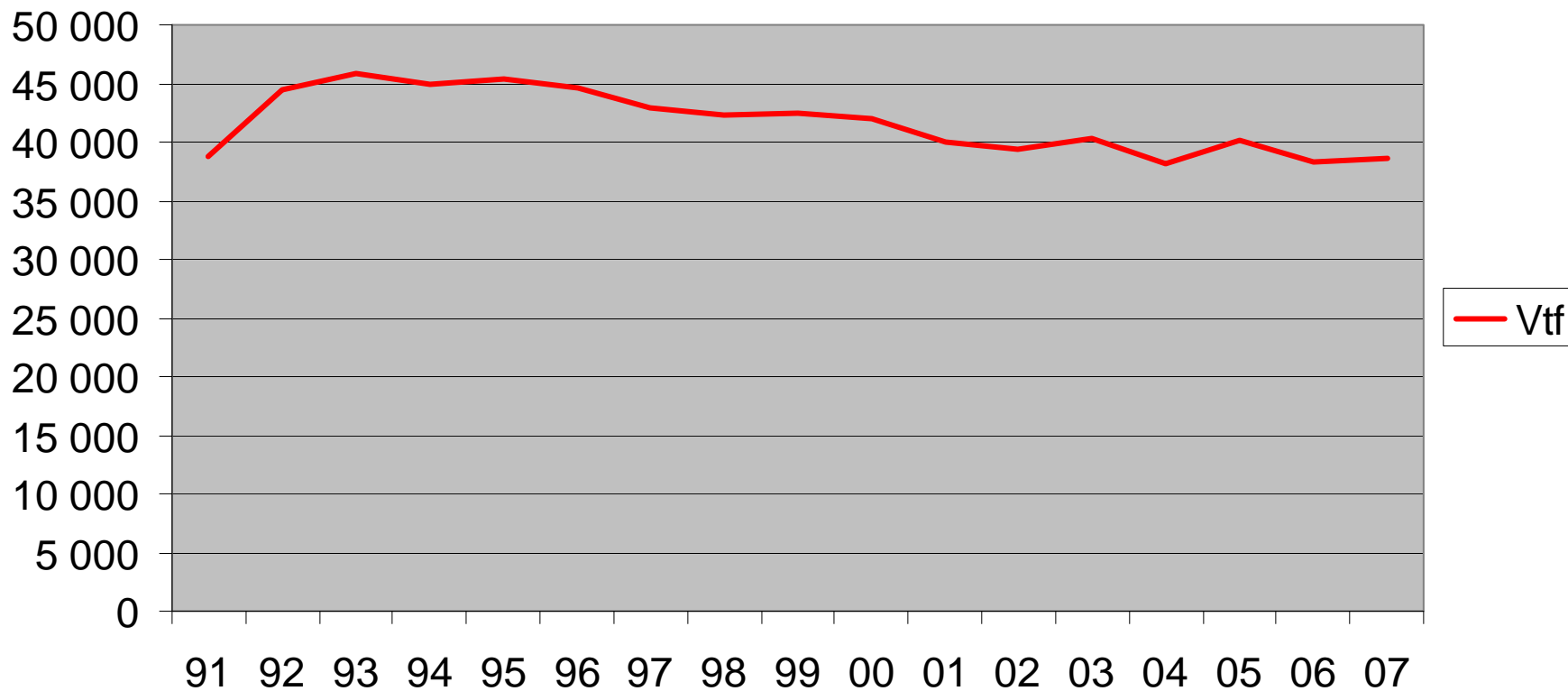


Infektionsläkareföreningens
Verksamhetsenkät

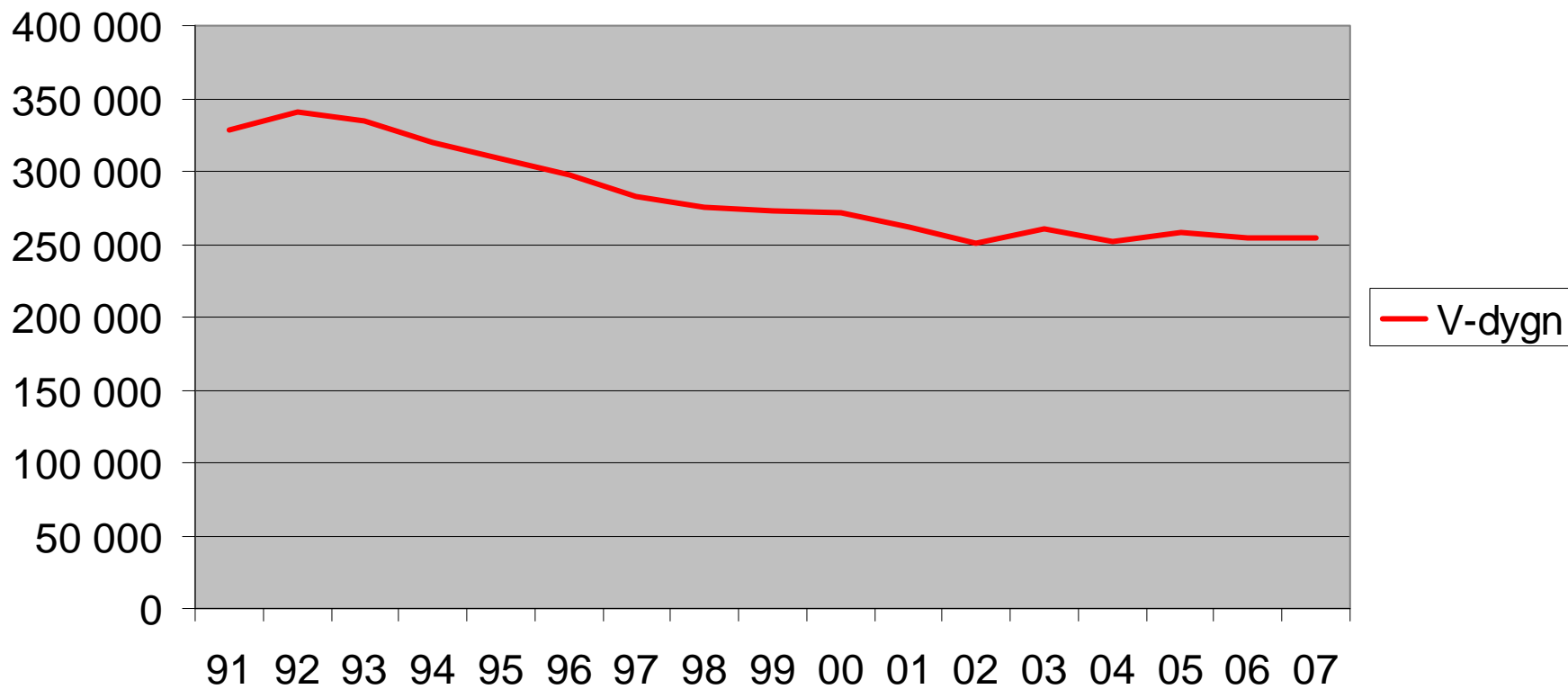
Nominella resp disponibla platser totalt



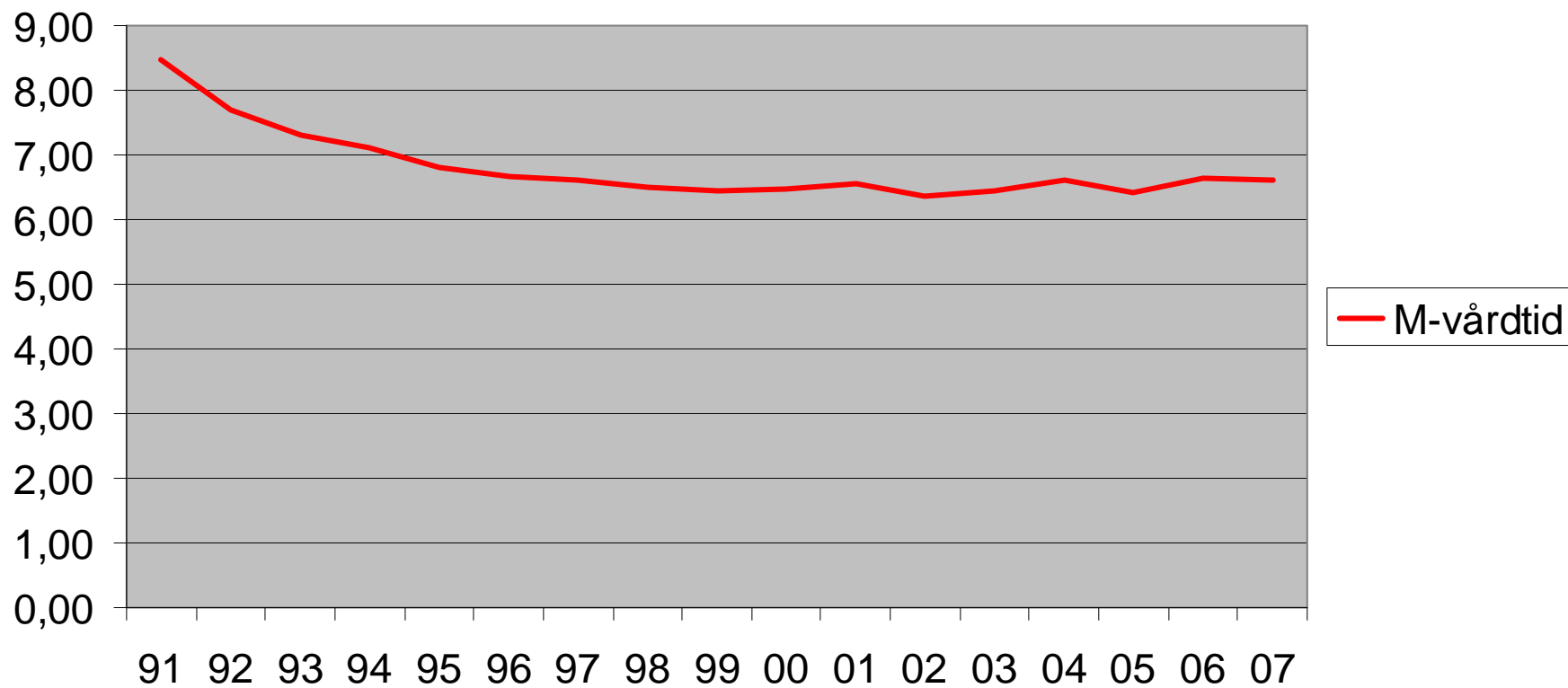
Vårdtillfällen tot



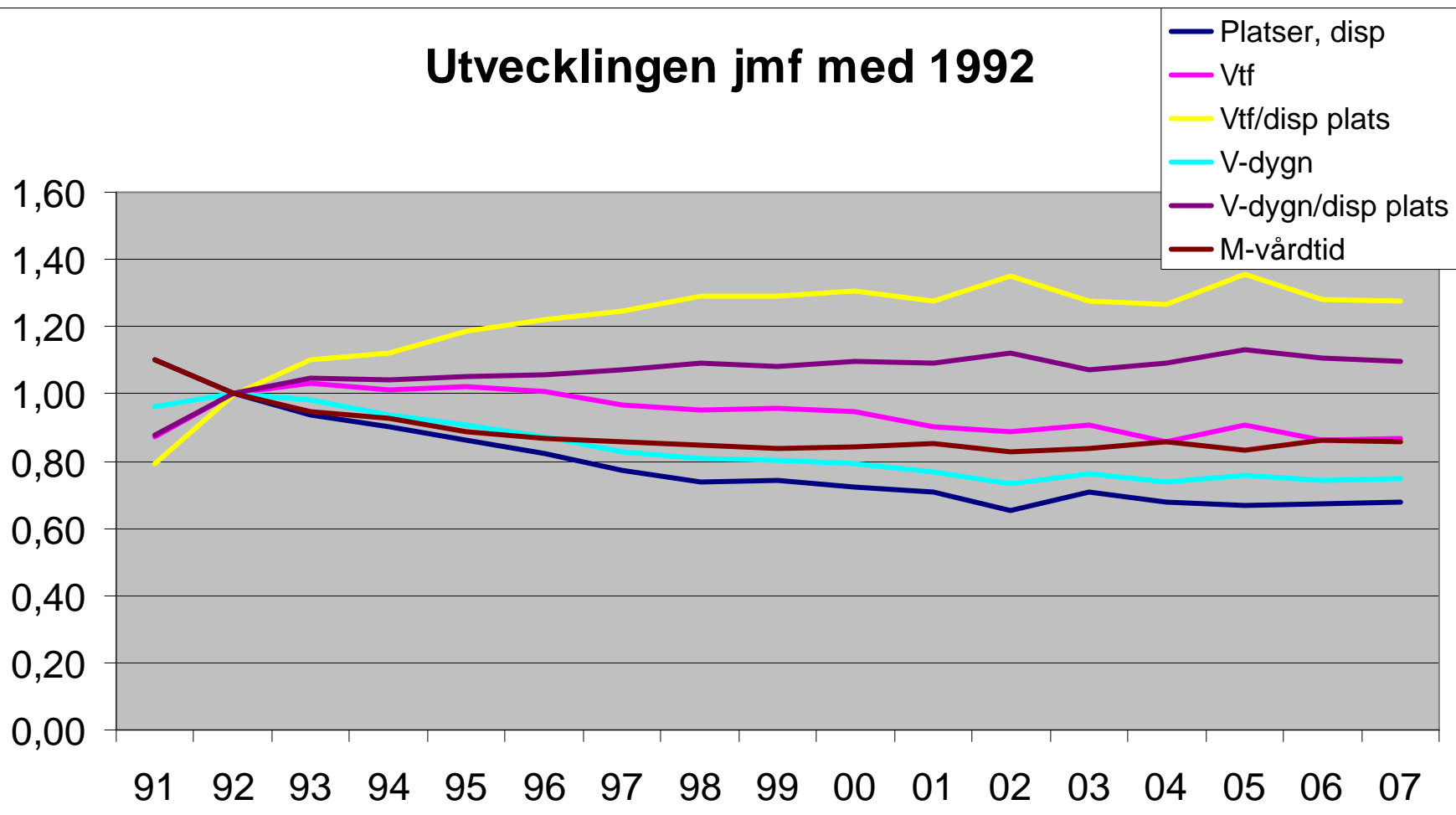
Vårddygn totalt



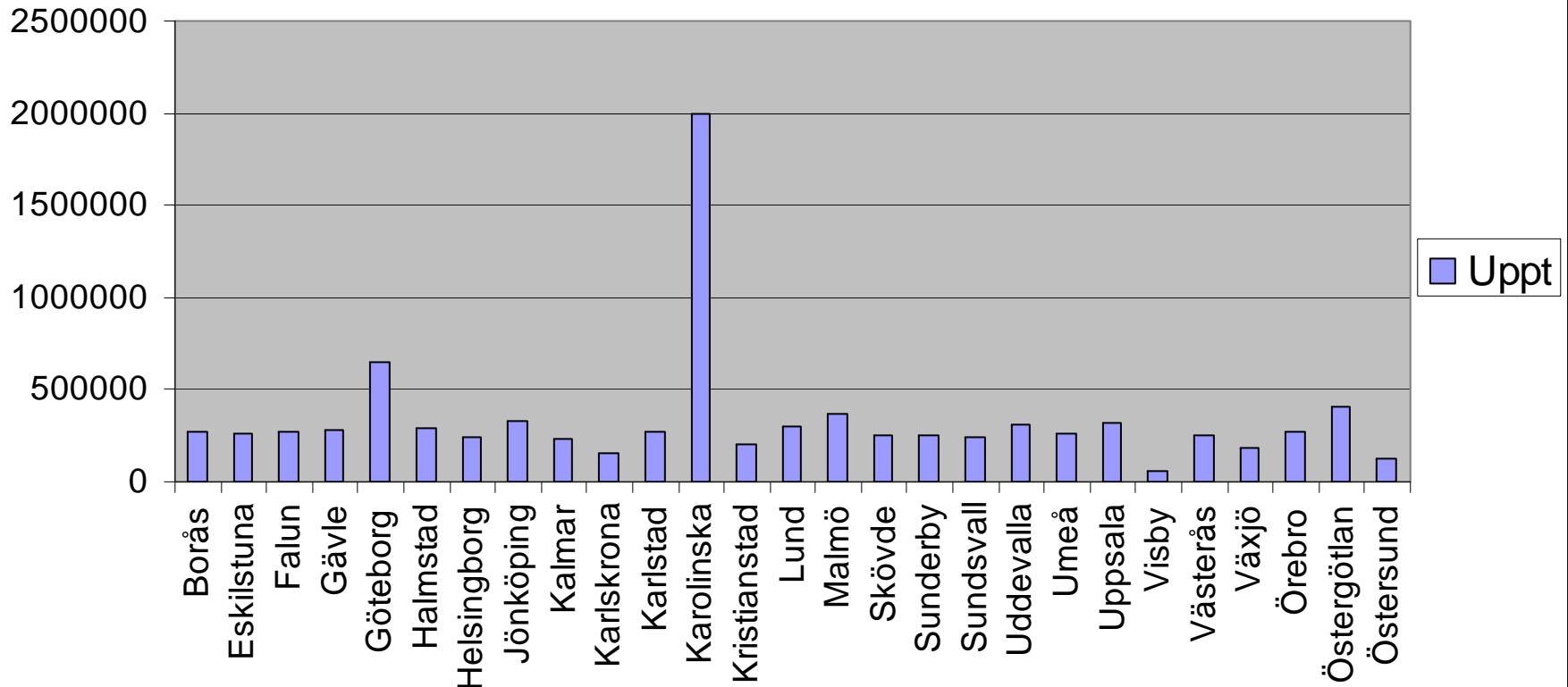
Medelvårdtid totalt



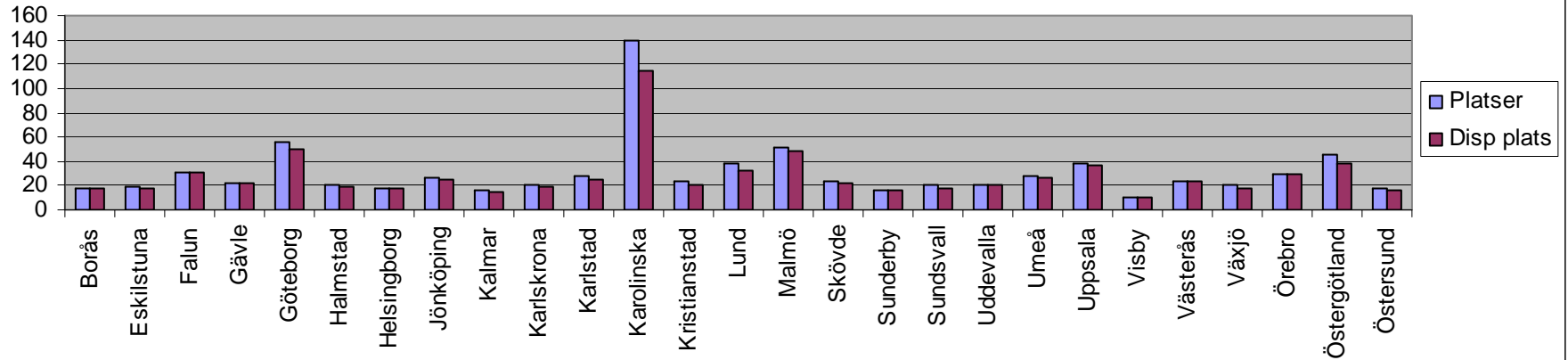
Utvecklingen jmf med 1992



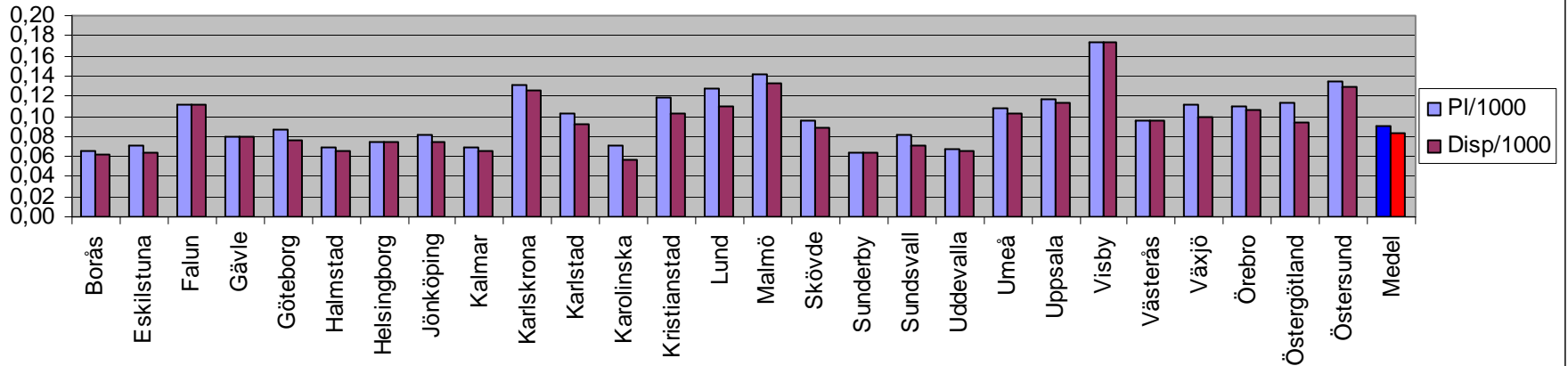
Upptagningsområde/klinik



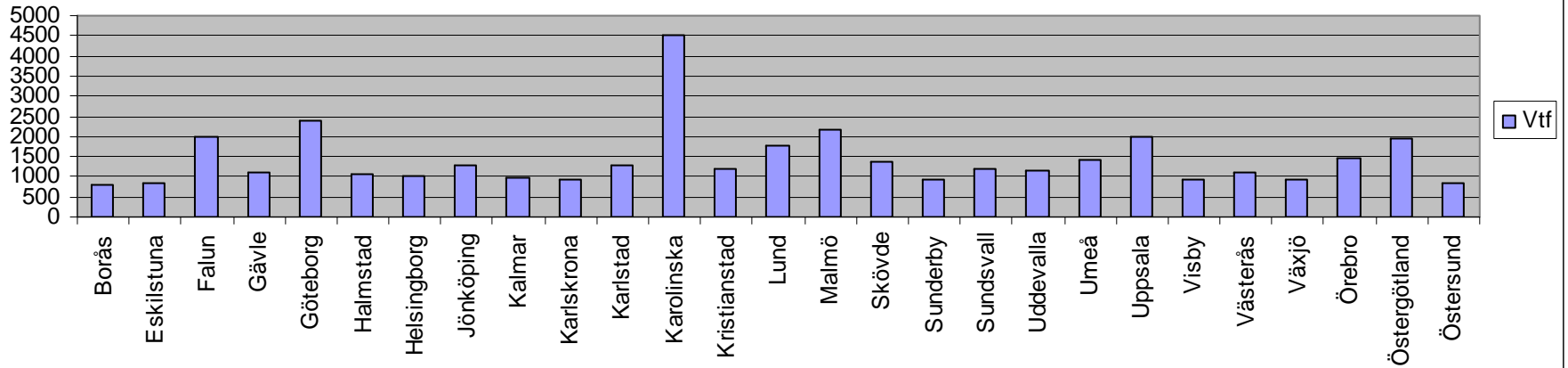
Nominella resp disponibla platser



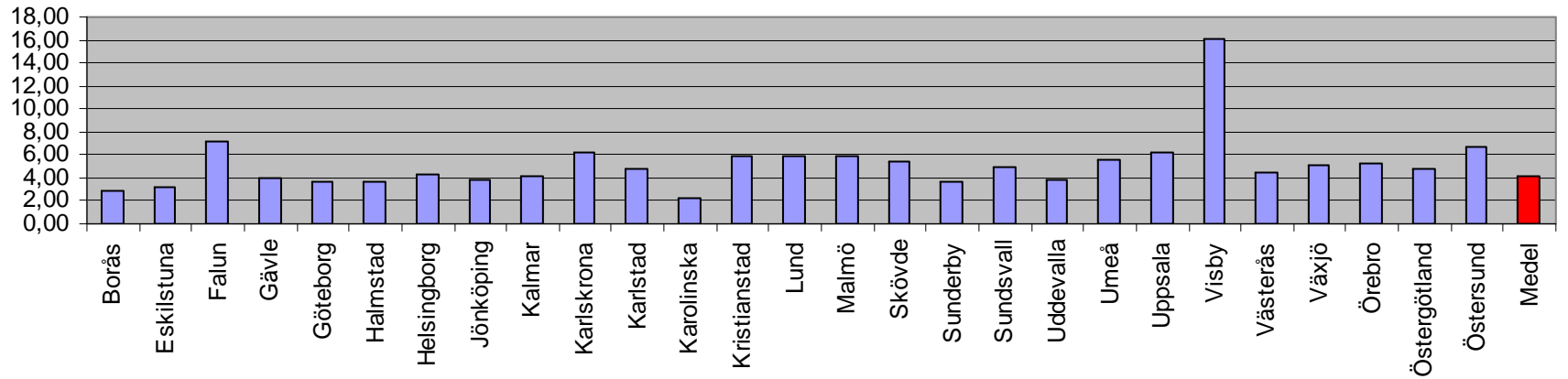
Nominella resp disponibla platser/1000 inv



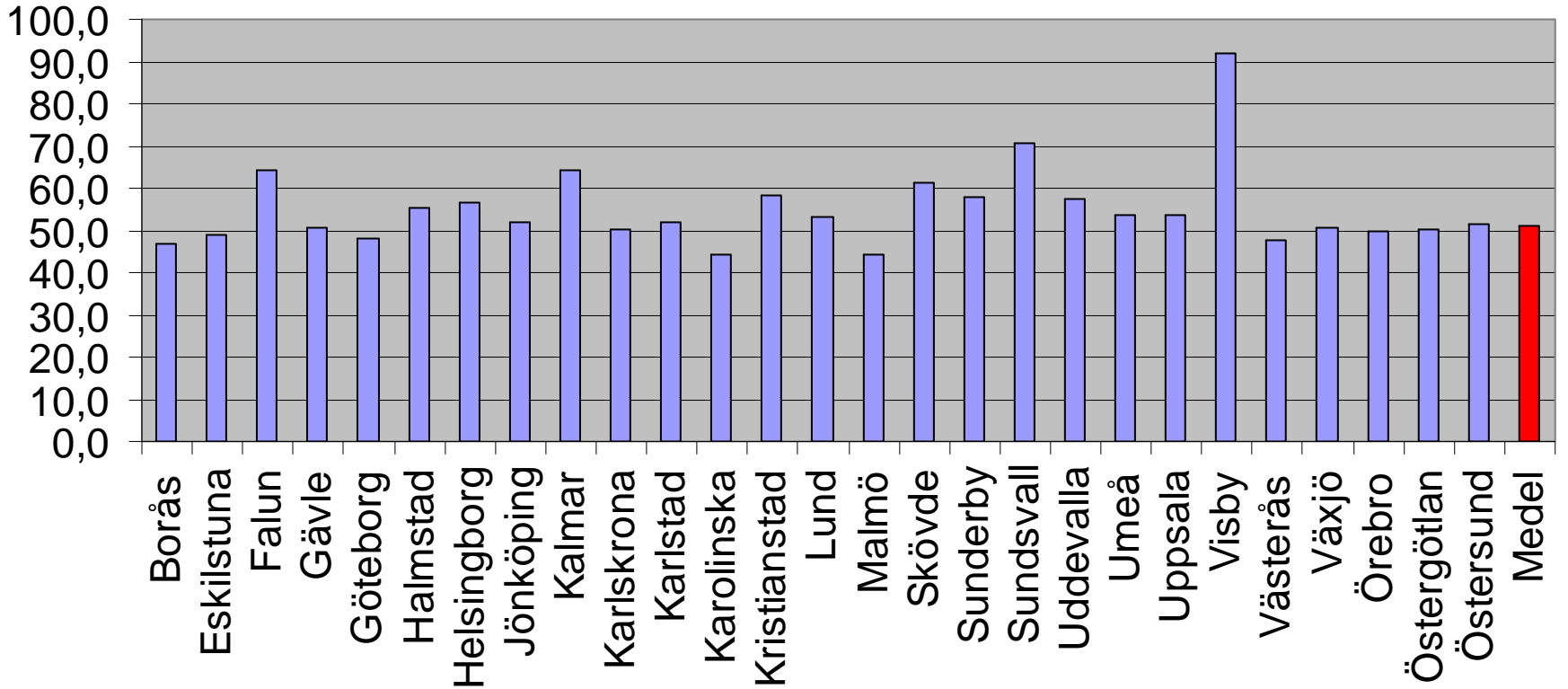
Vårdtillfällen



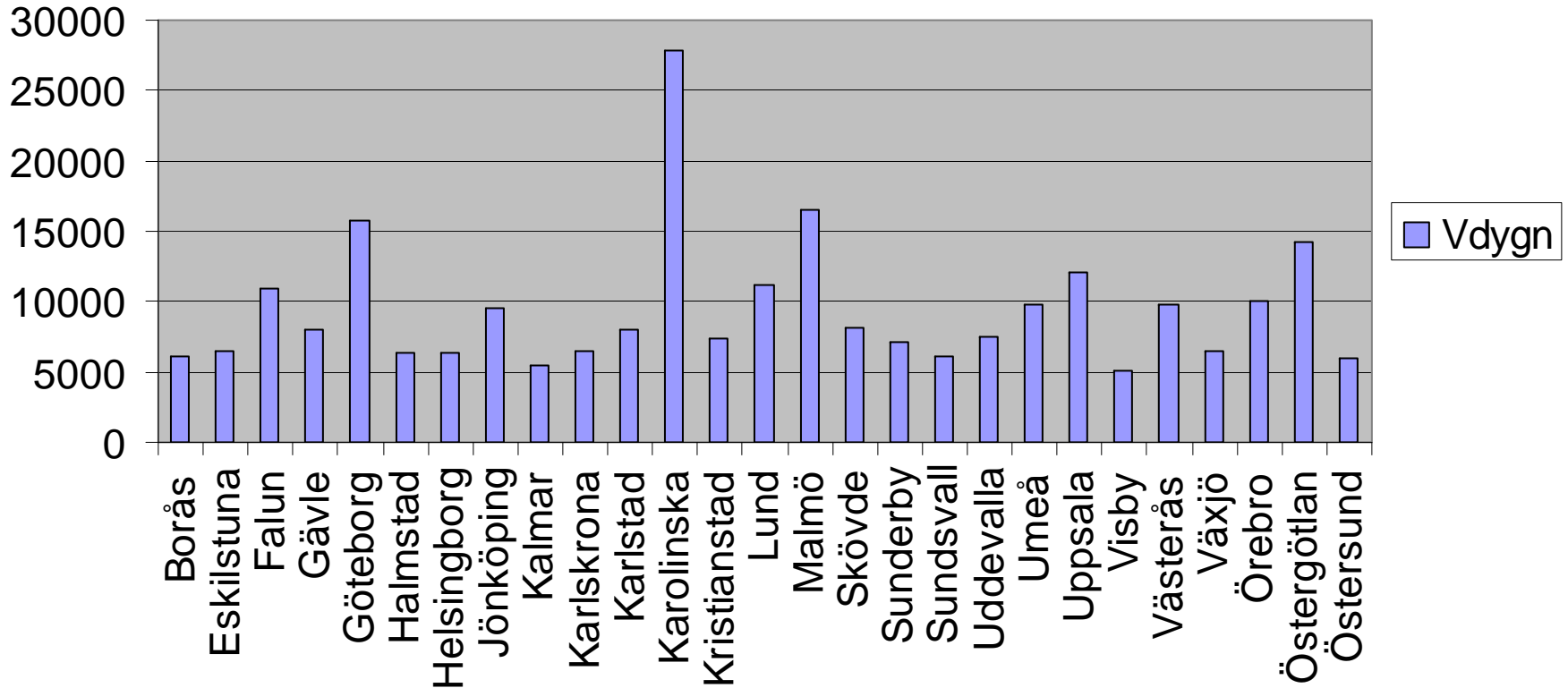
Vårdtillfällen/1000 inv



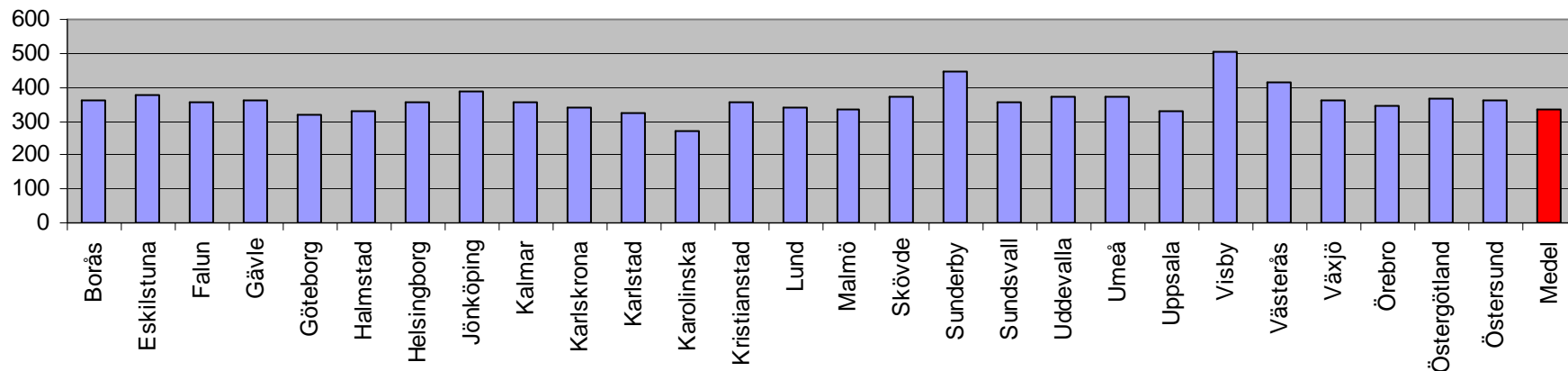
Vårdtillfällen/disponibel plats



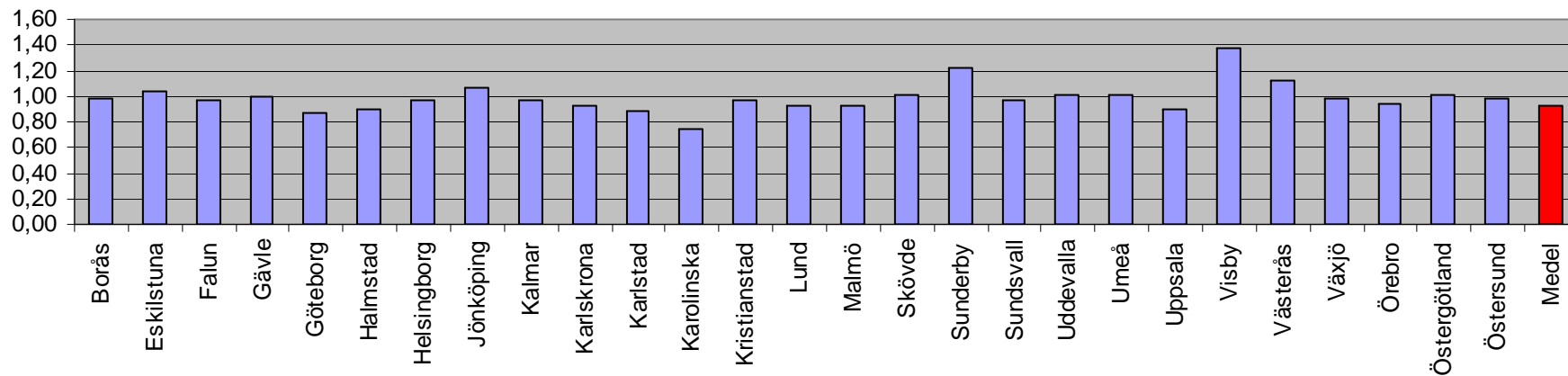
Vårddygn



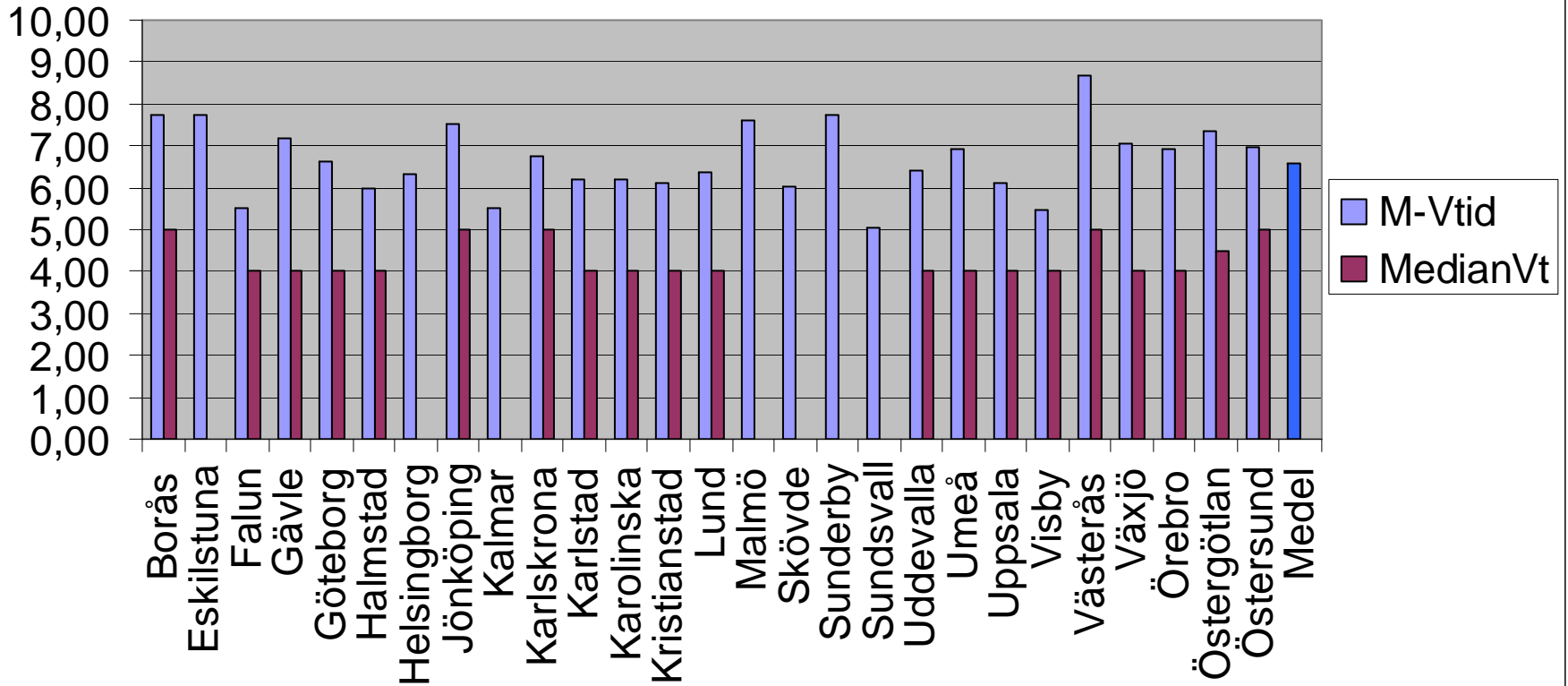
Vårddygn/disponibel plats



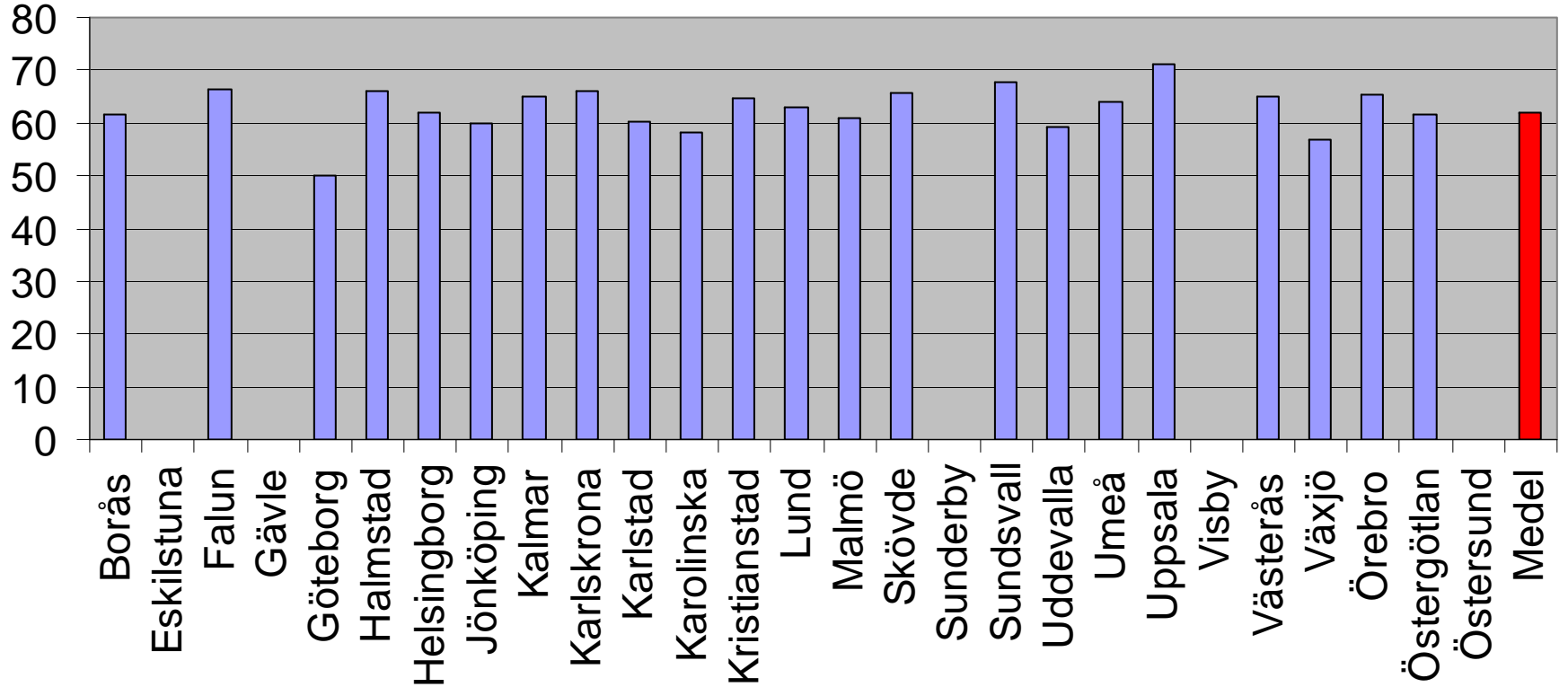
Vårddygn/disponibelt vårddygn



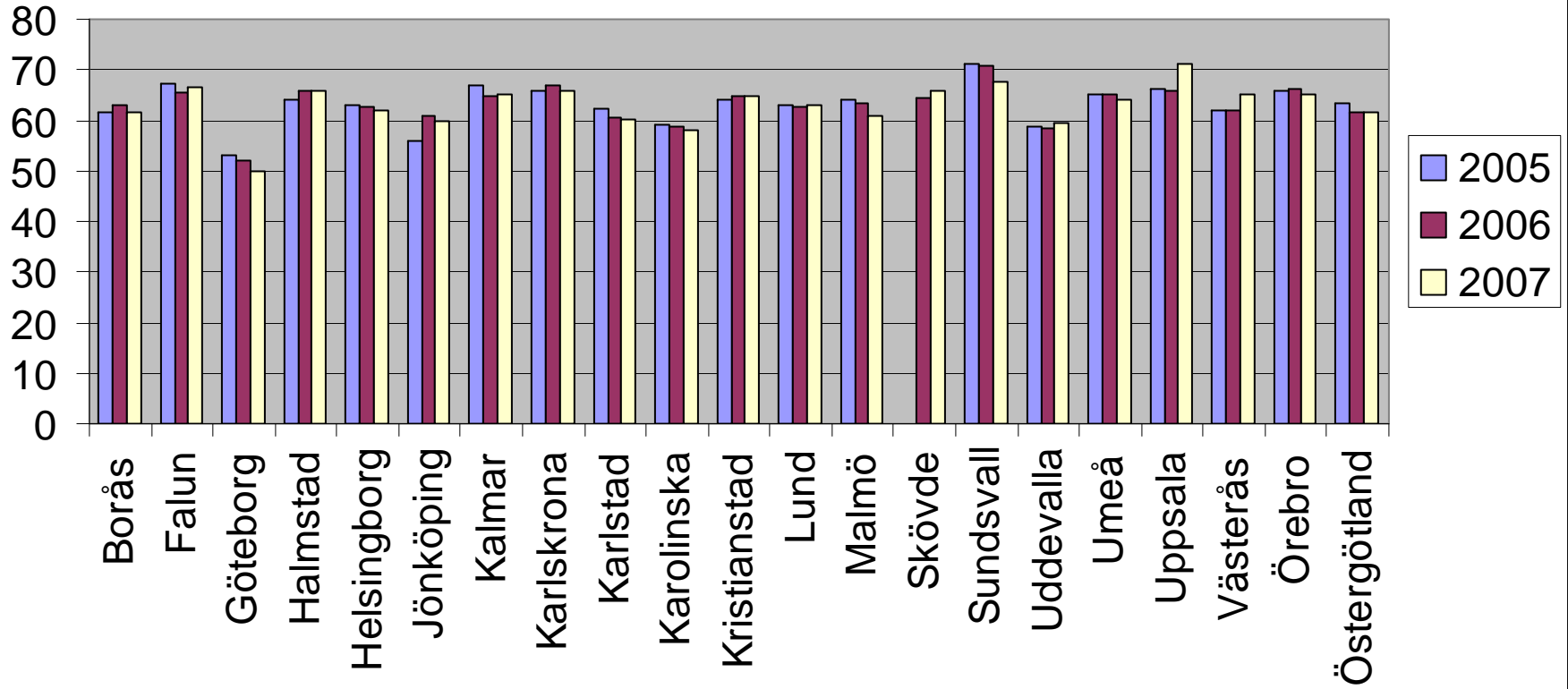
Medel- resp medianvårdtid



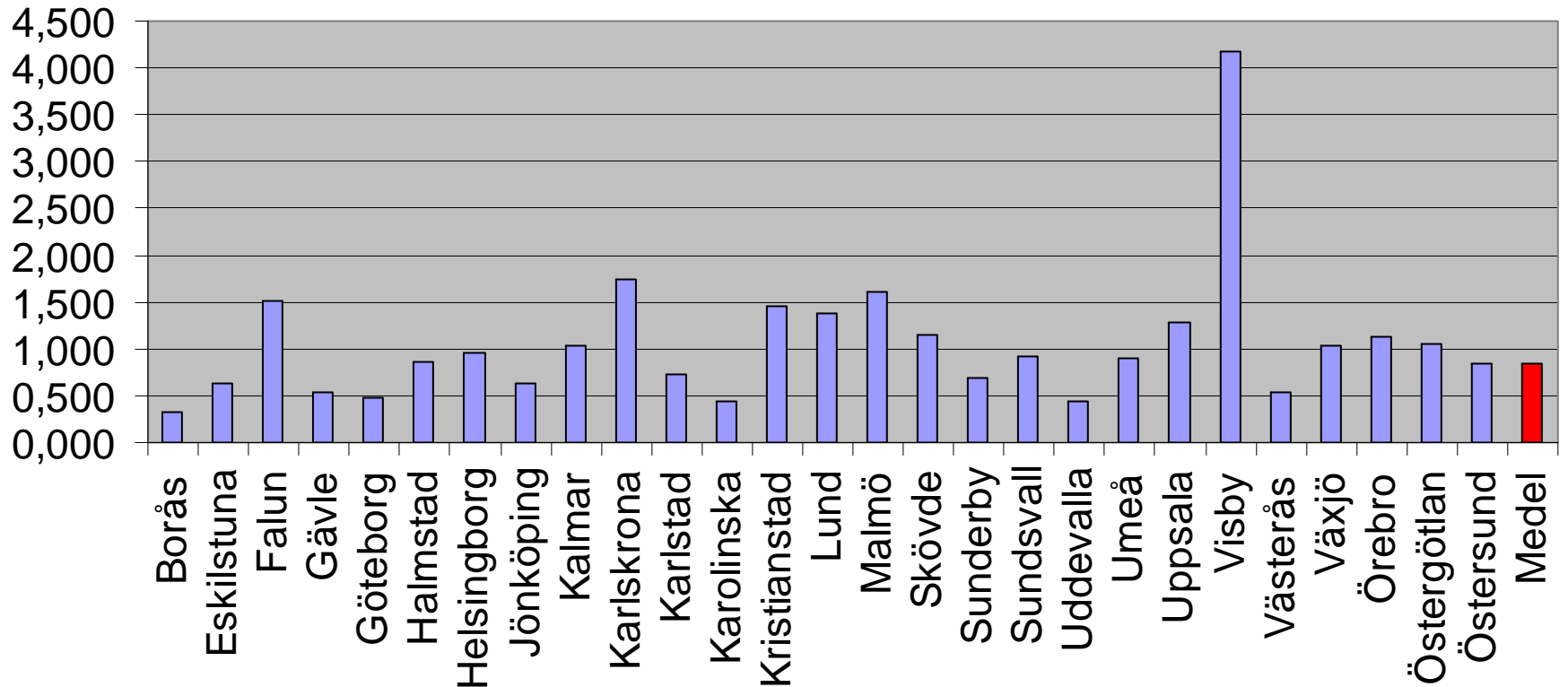
Medelålder



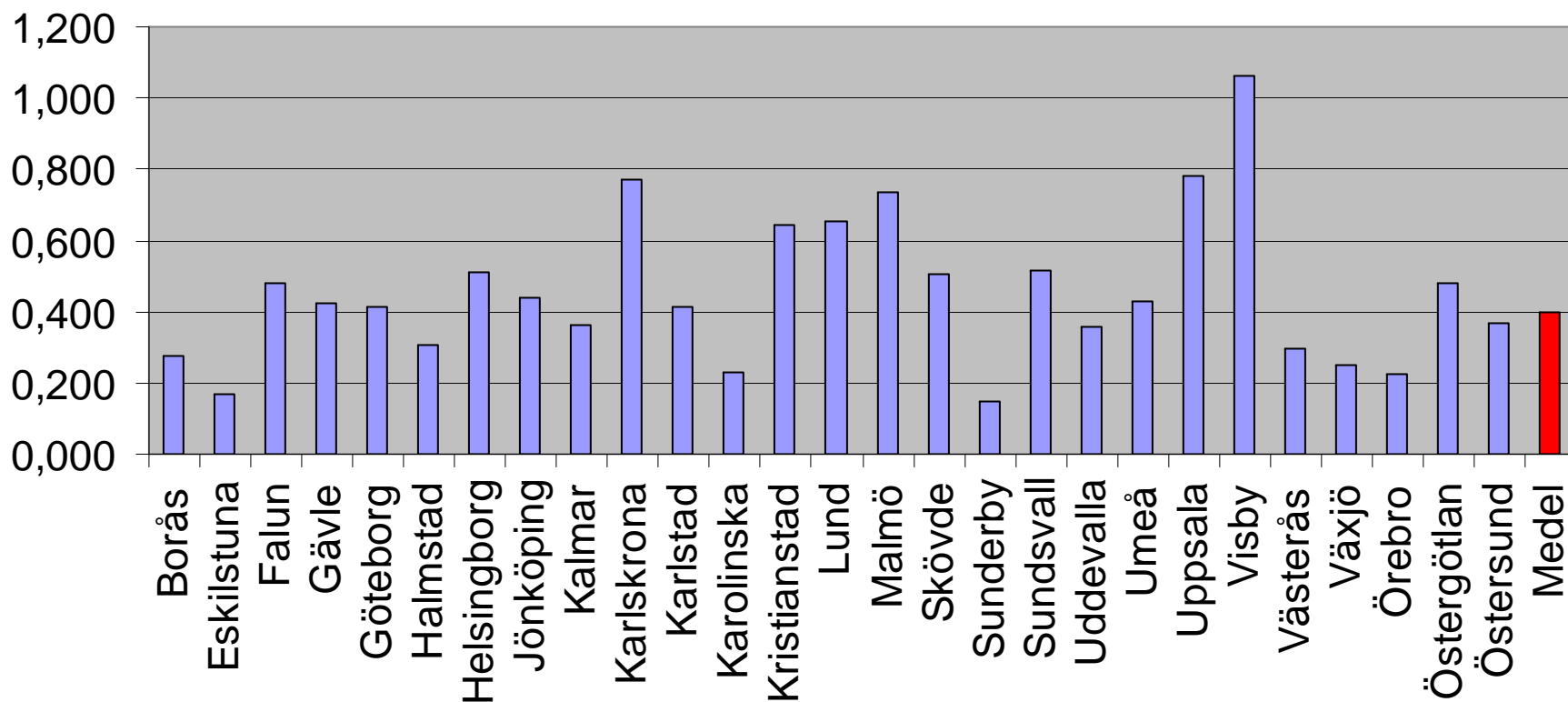
Medelålder



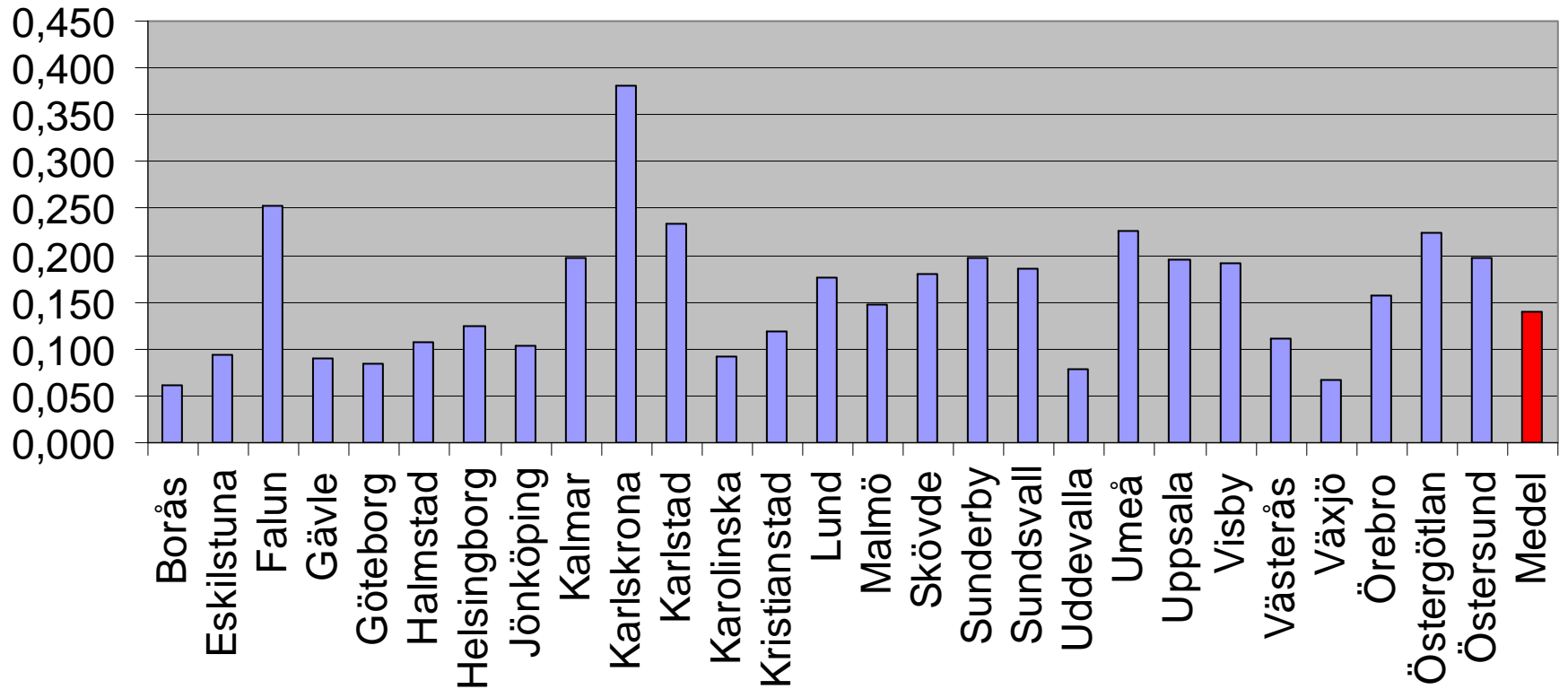
Vårdtillfällen pneumoni/1000 inv



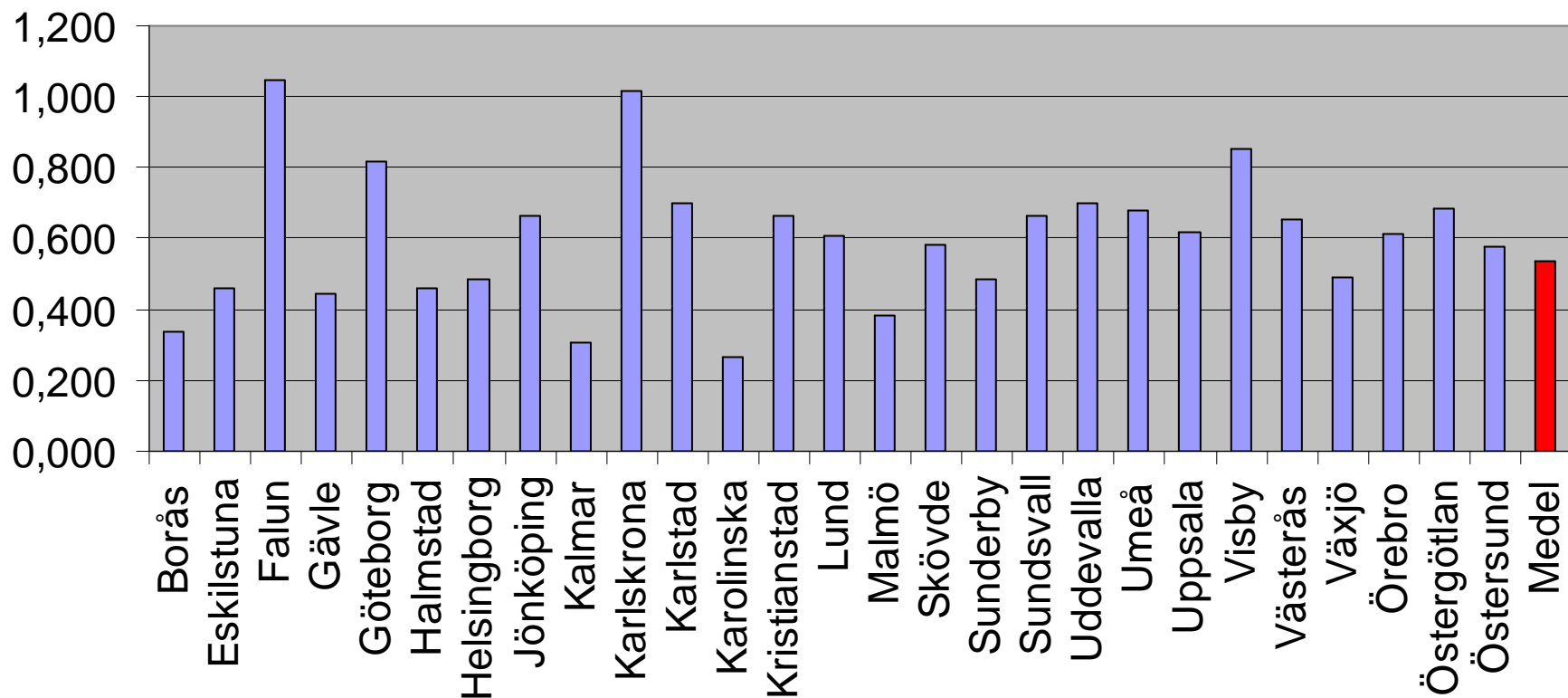
Vårdtillfällen "sepsis"/1000 inv



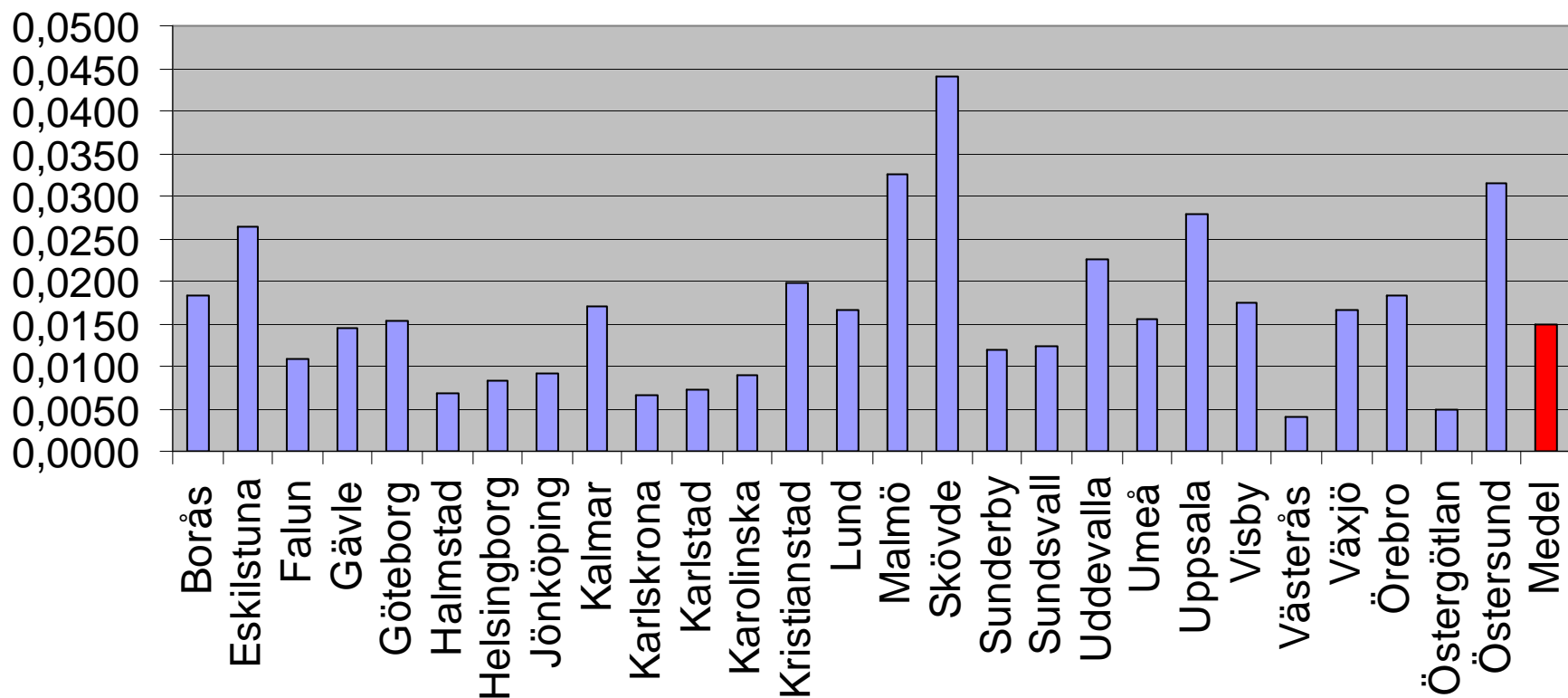
Vårdtillfällen ortopediska inf/1000 inv



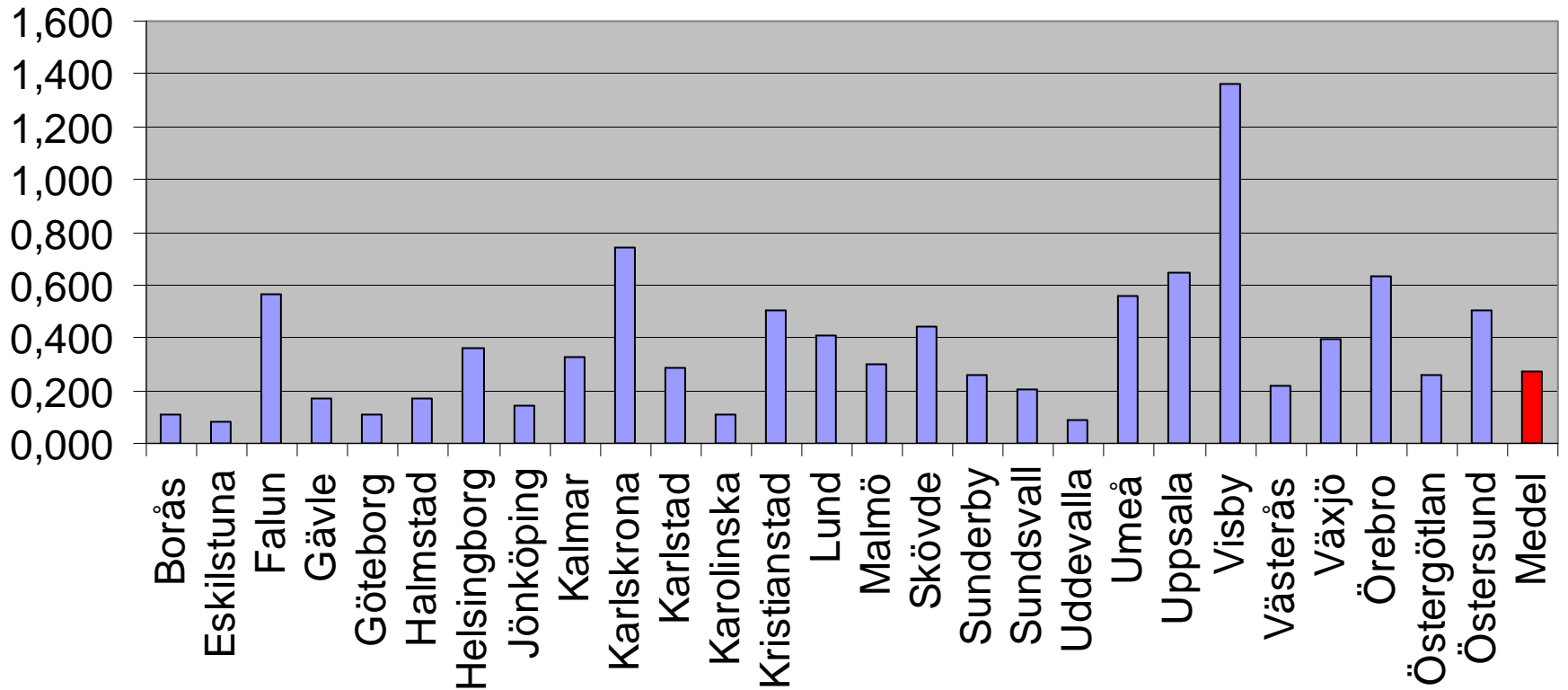
Vårdtillfällen mag-tarminf/1000 inv



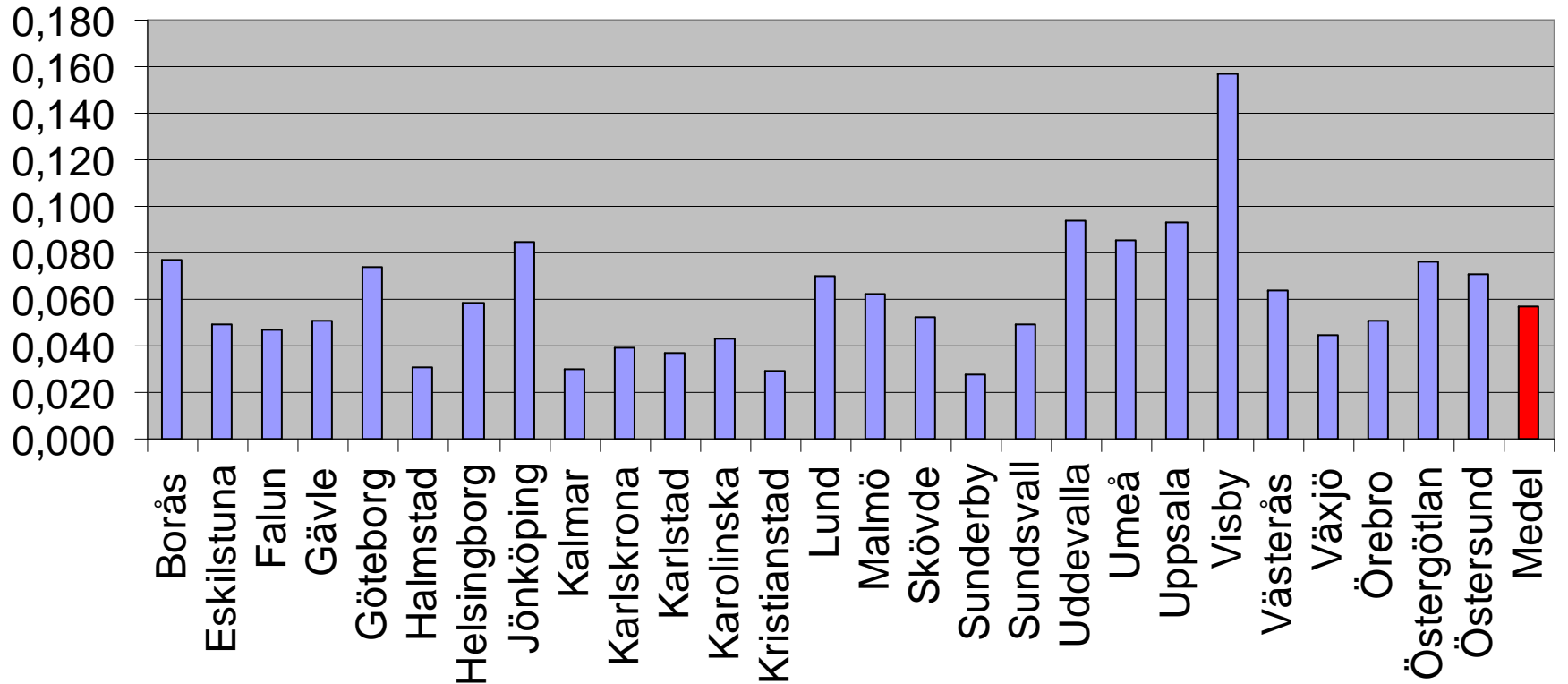
Vårdtillfällen bakteriell meningit/1000 inv



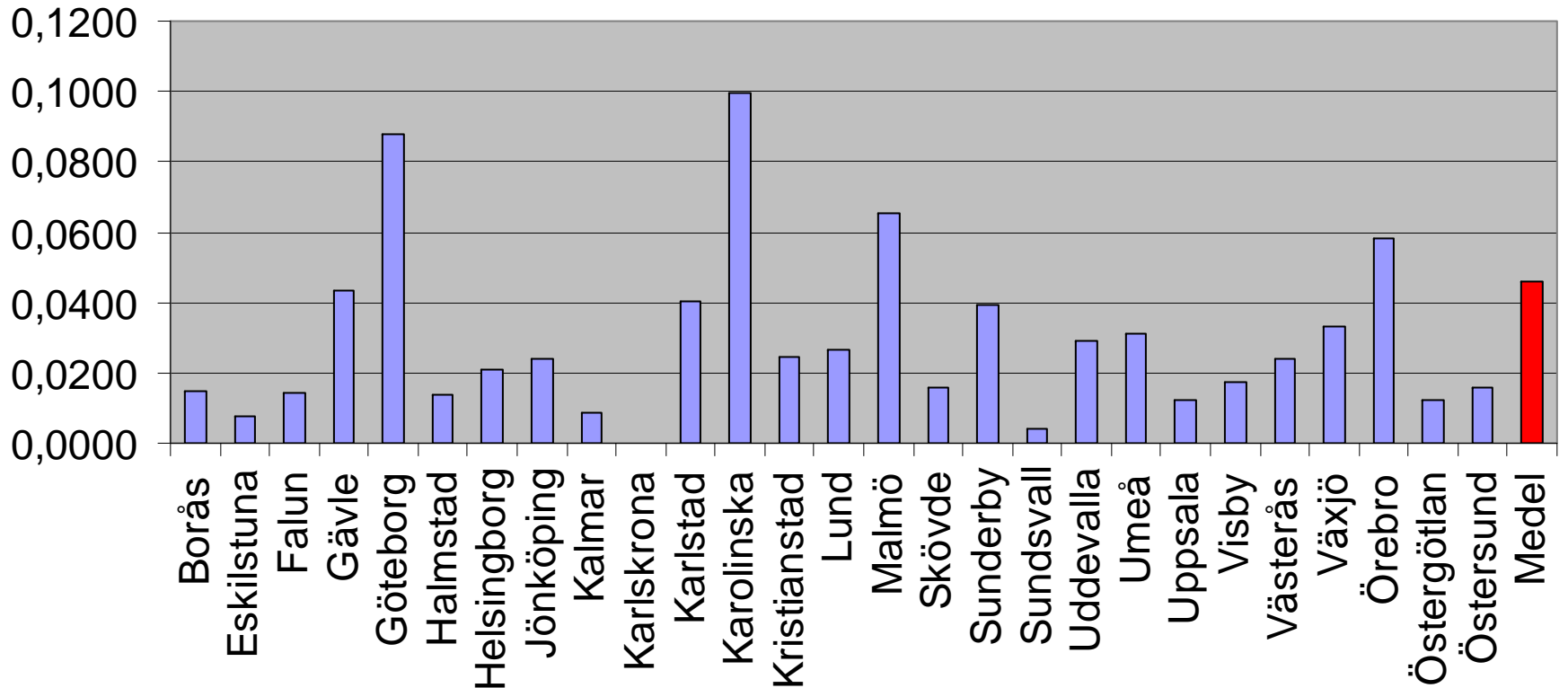
Vårdtillfällen pyelonefrit/1000 inv



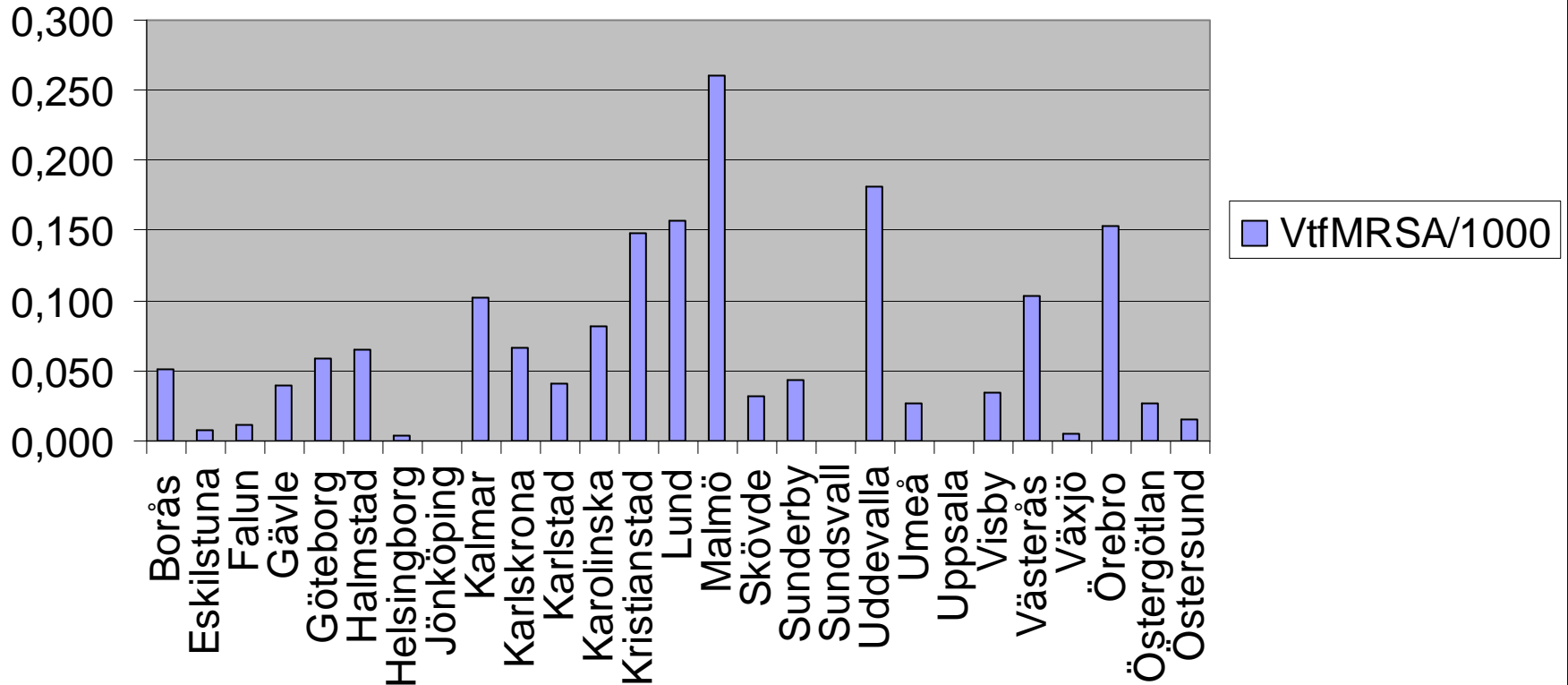
Vårdtillfällen endokardit/1000 inv



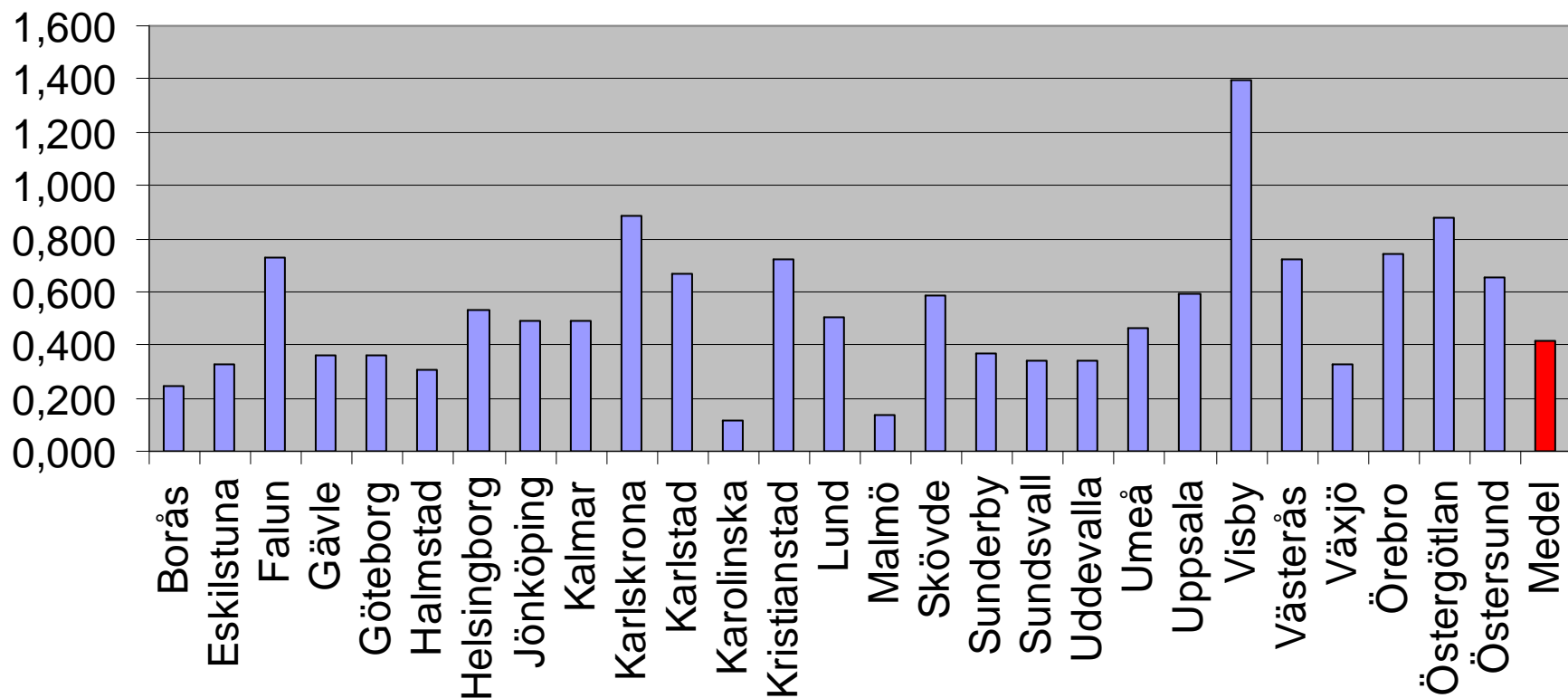
Vårdtillfällen HIV/1000 inv



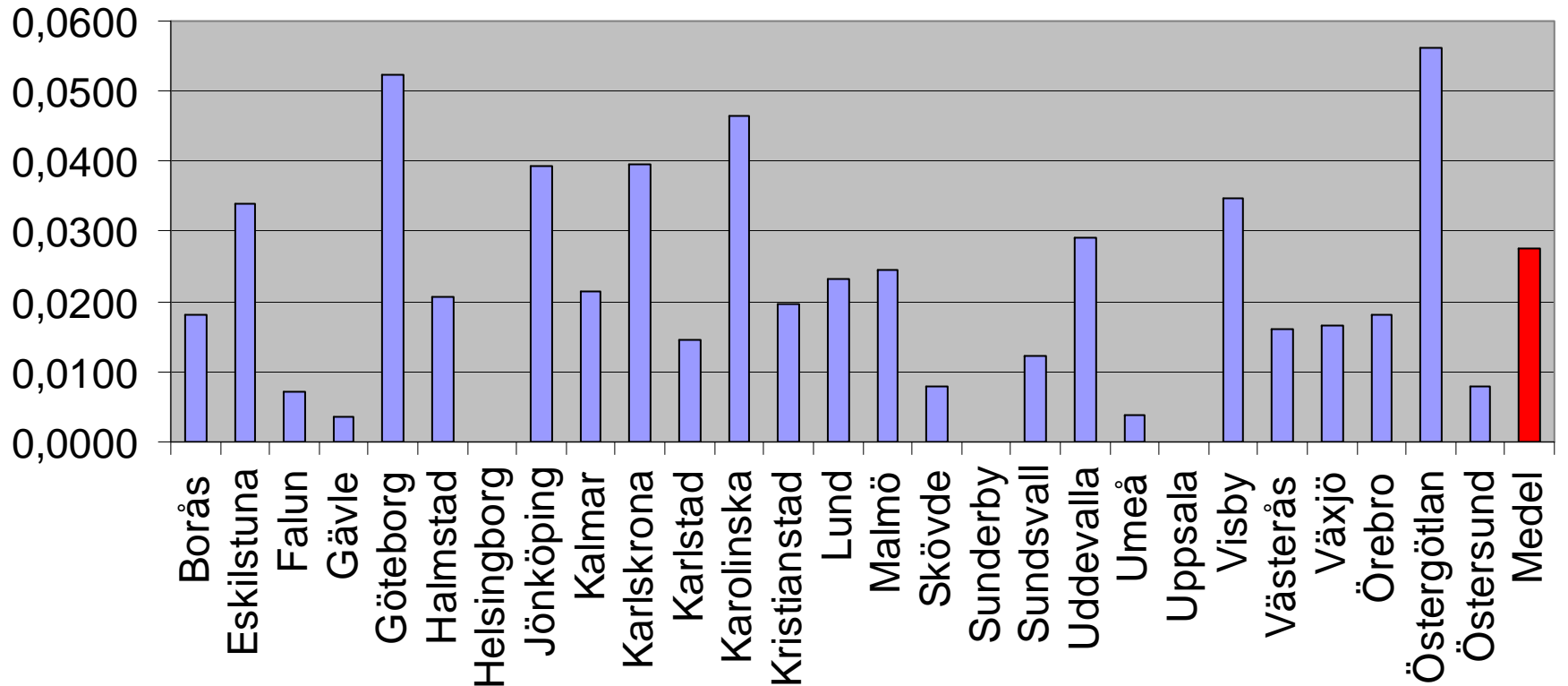
Vårdtillfällen MRSA/1000 inv



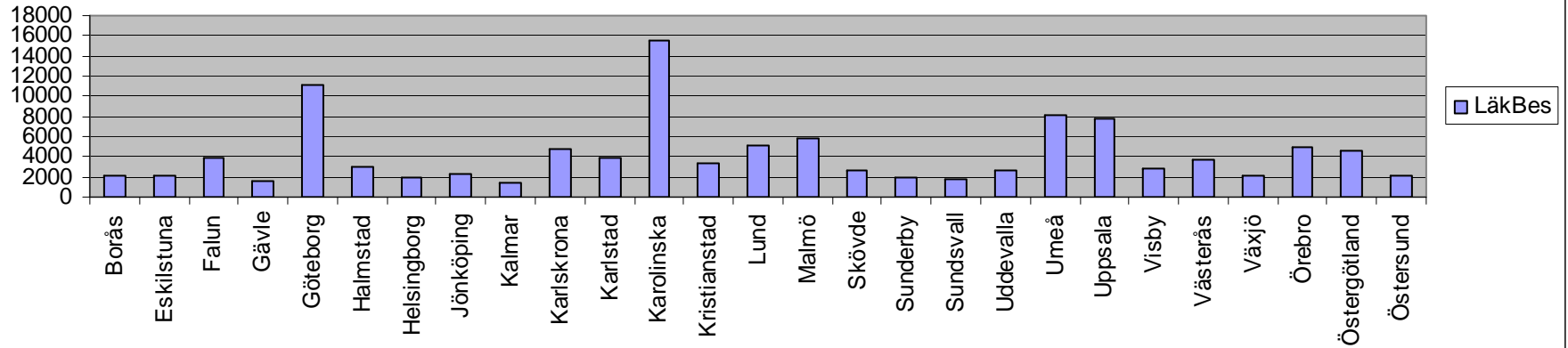
Vårdtillfällen hud- o mjukdelsinf/1000 inv



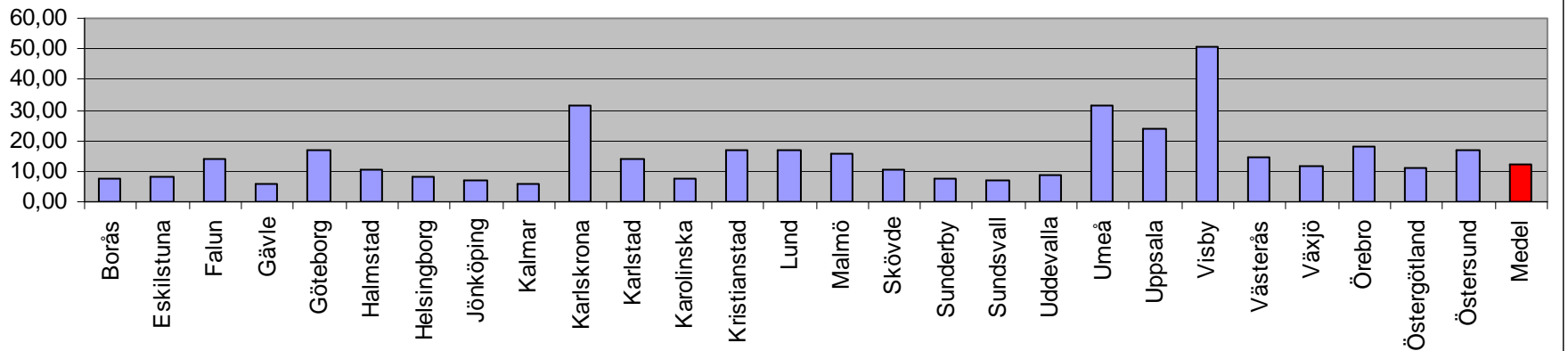
Vårdtillfällen Tbc/1000 inv



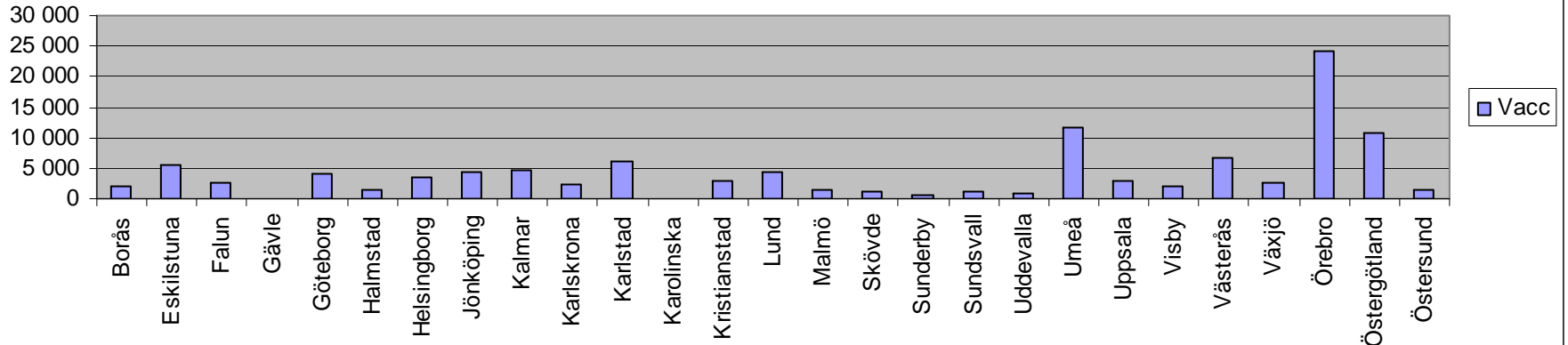
Läkarbesök, ej vacc



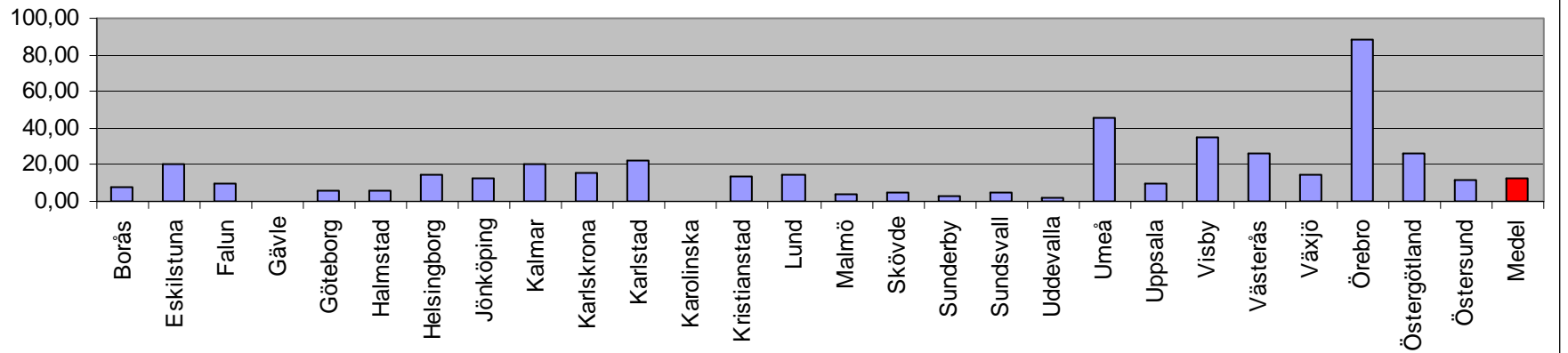
Läkarbesök (ej vacc)/1000 inv



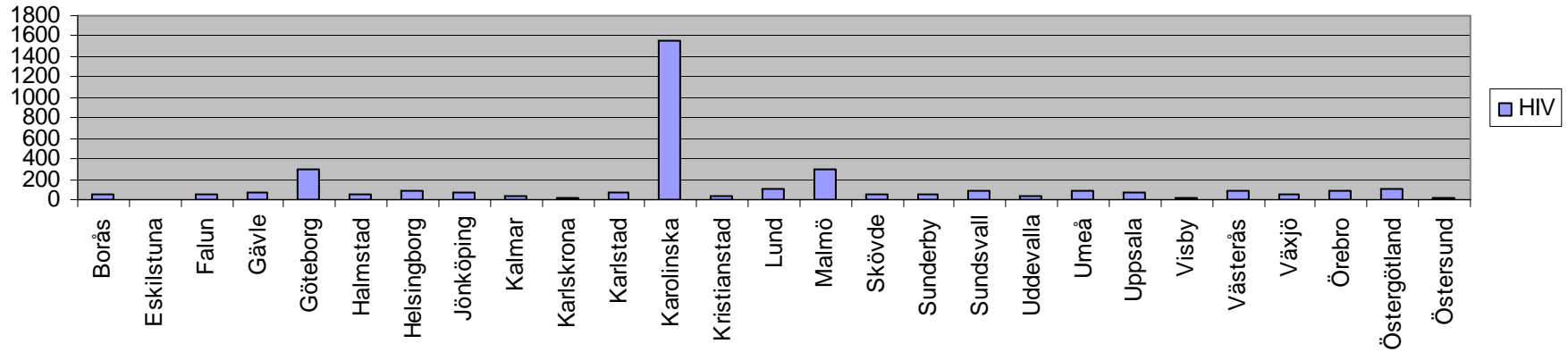
Vaccinationsbesök



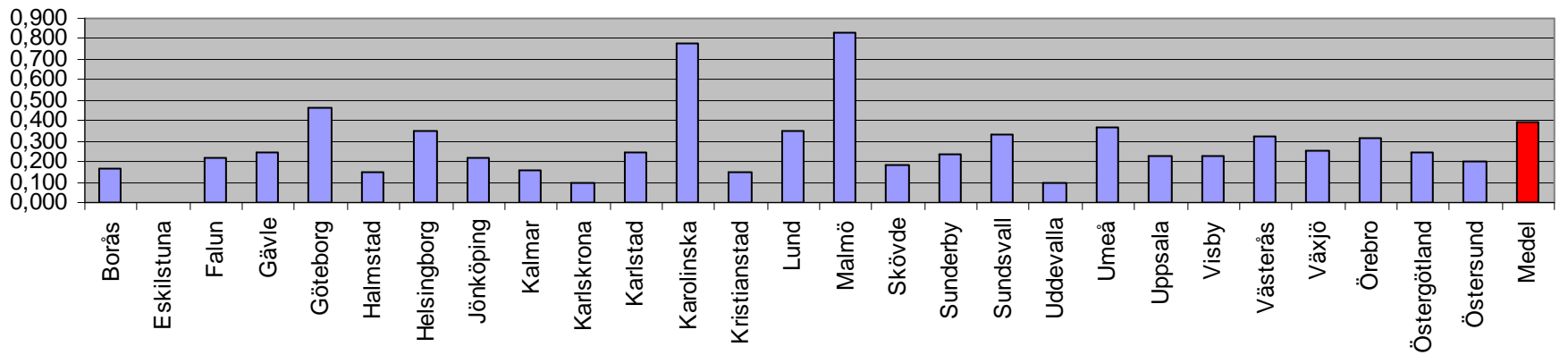
Vaccinationsbesök/1000 inv



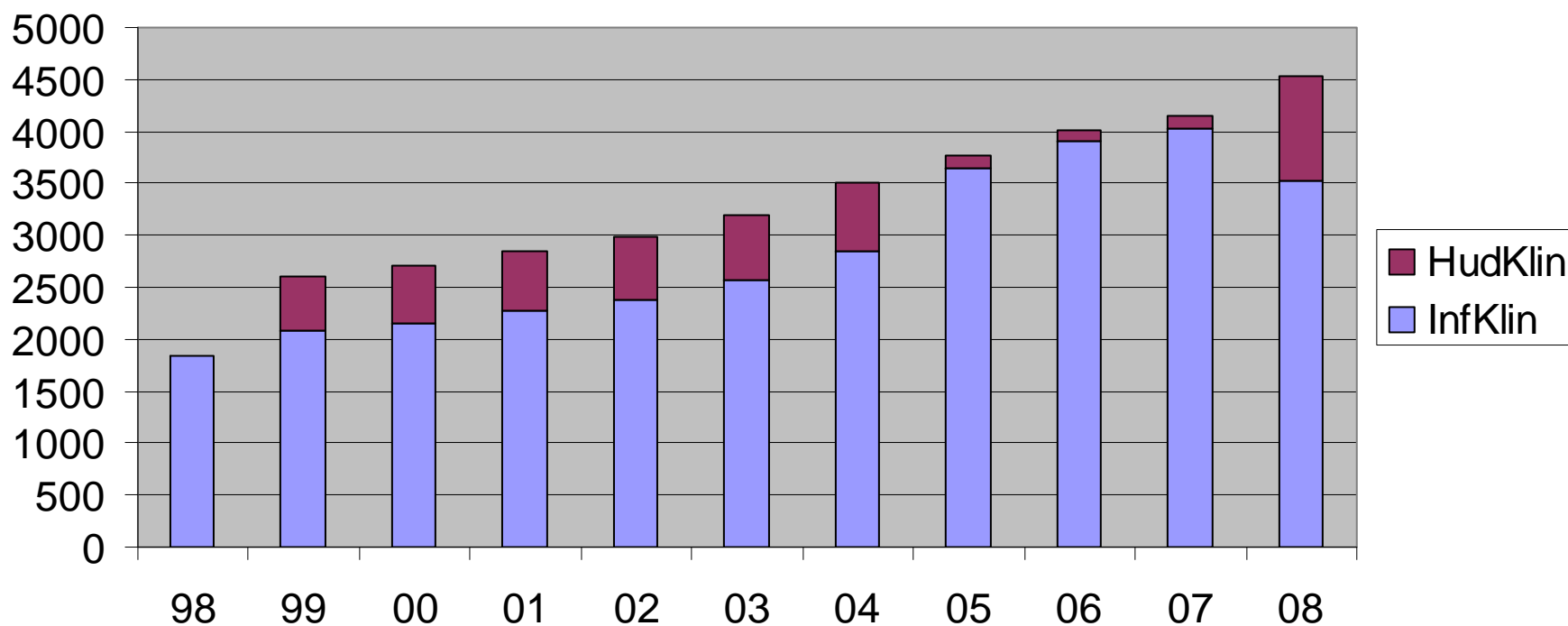
HIV-patienter



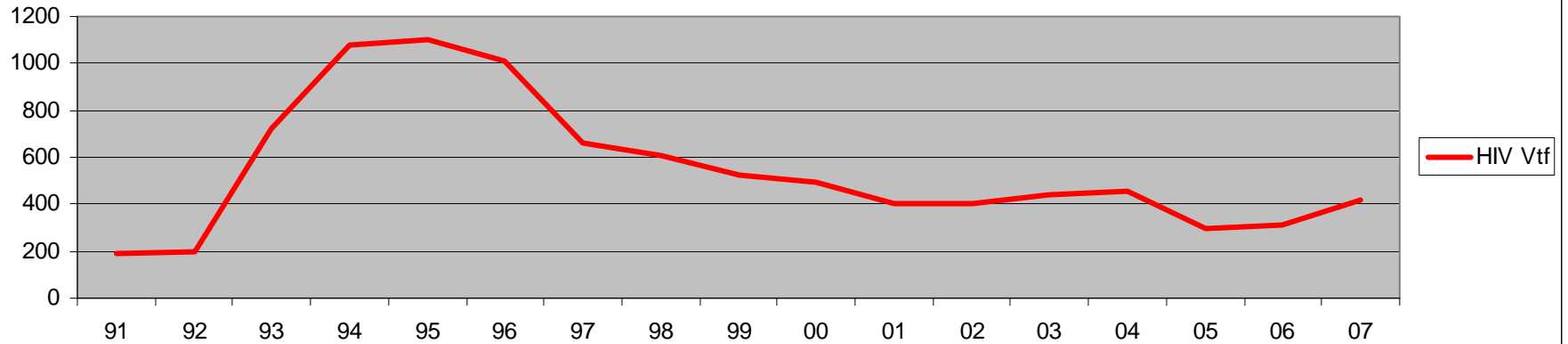
HIV-patienter /1000 inv



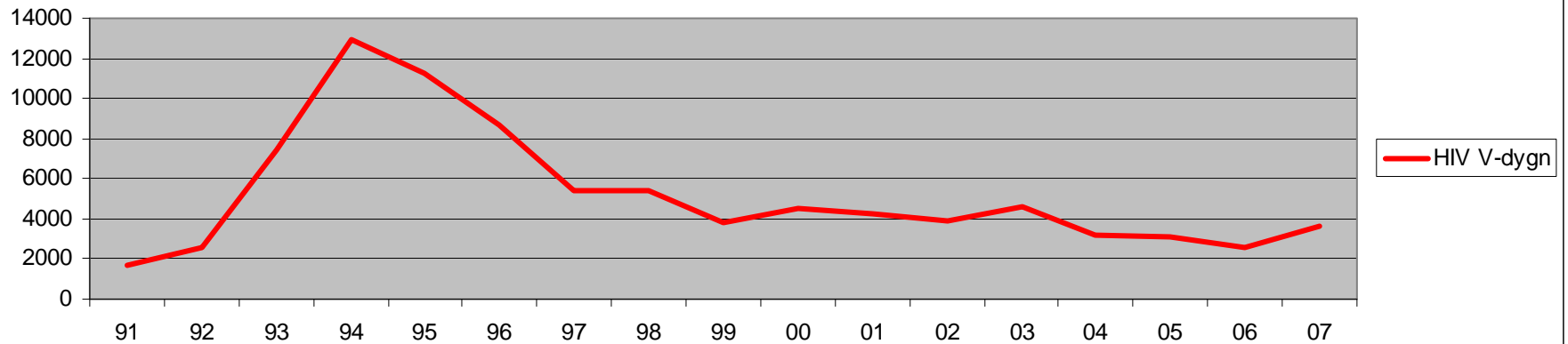
HIV-patienter fördelade på infektionskliniker resp hudkliniker



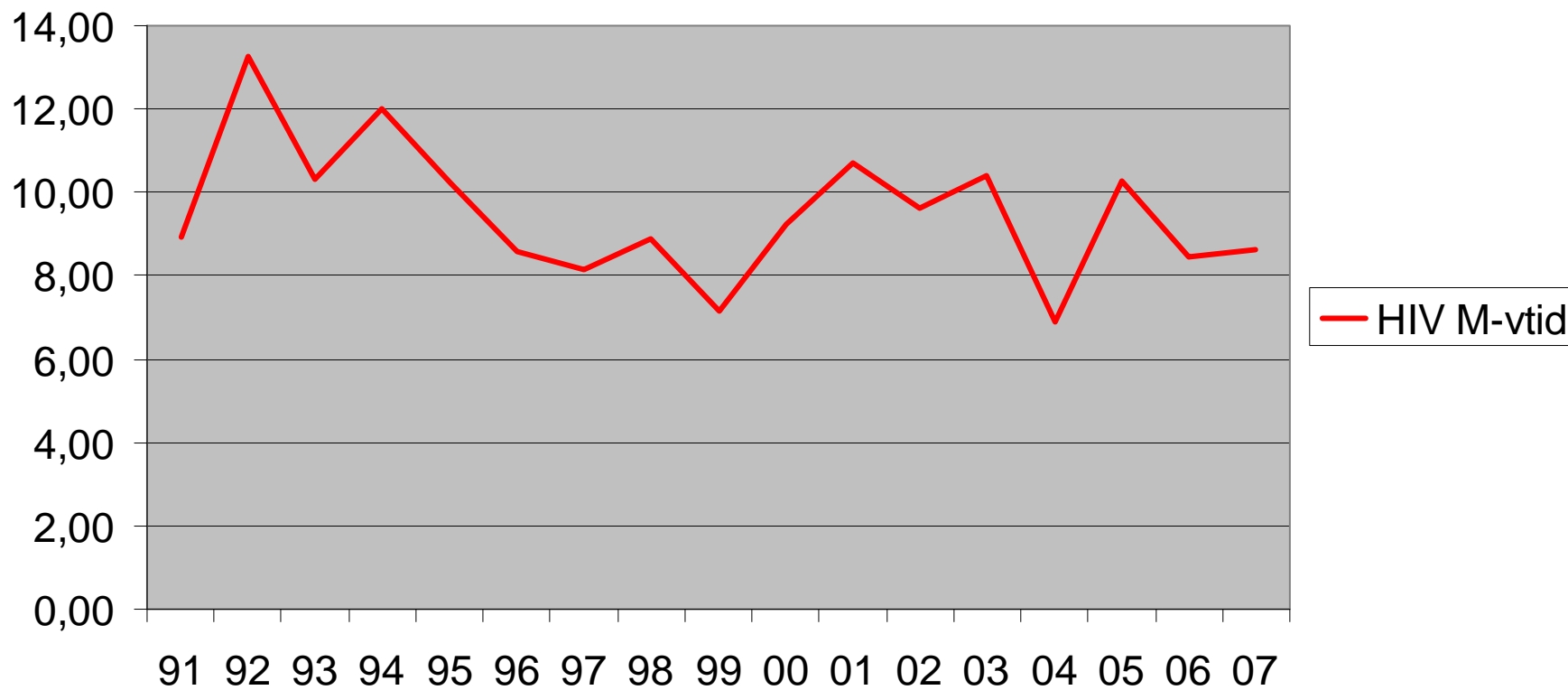
HIV vårdtillfällen



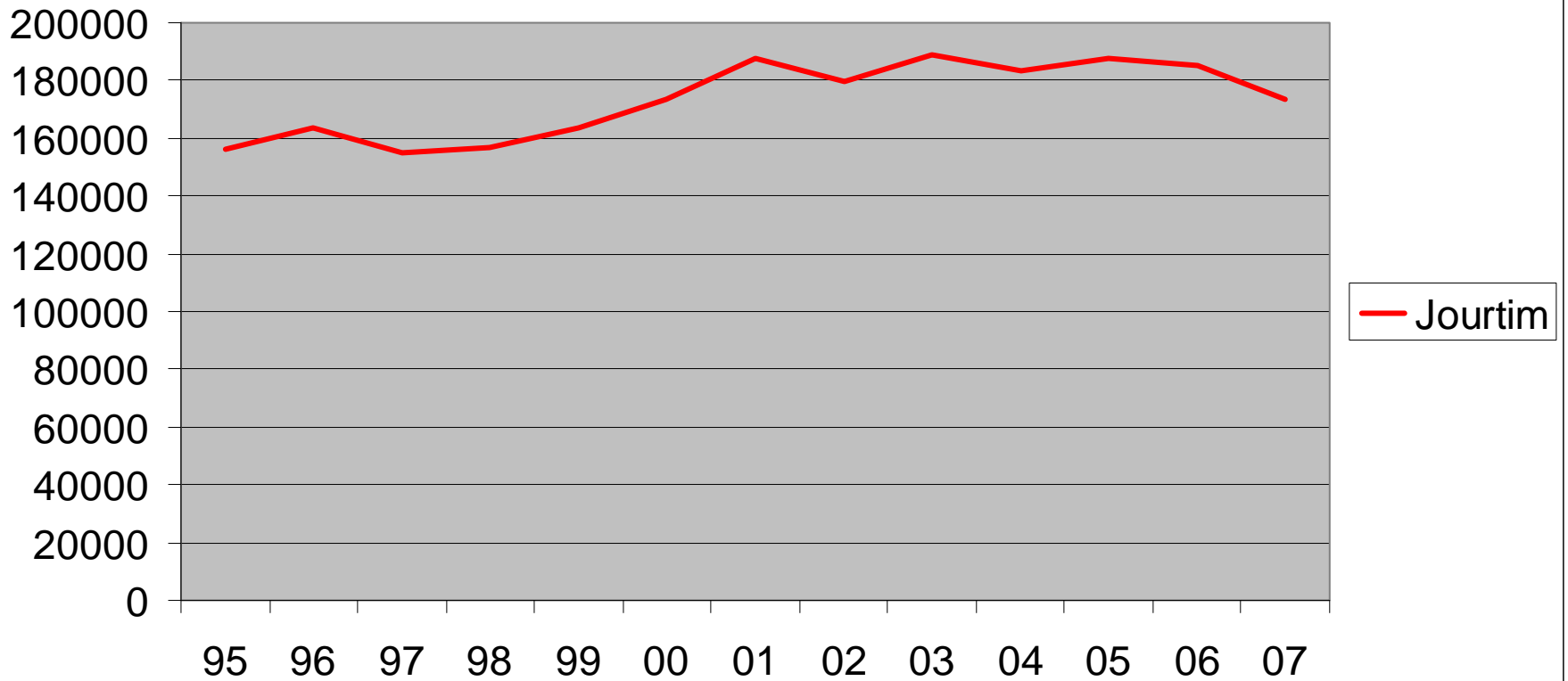
HIV vårddygn



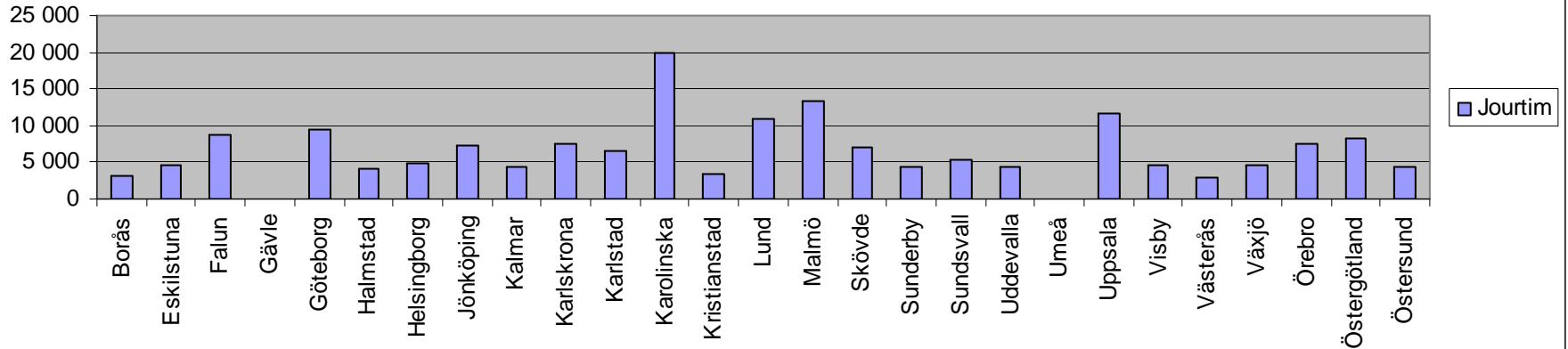
HIV medelvårddtid



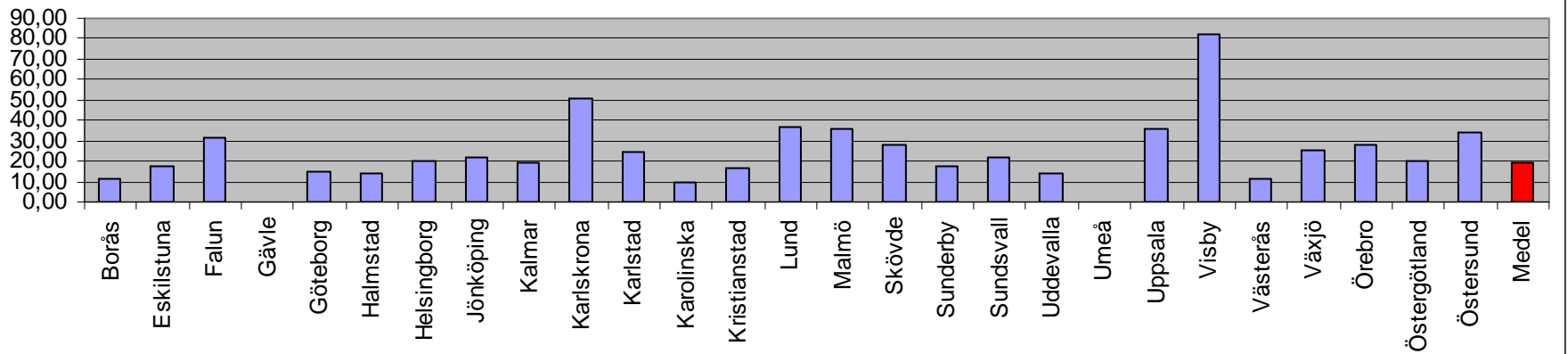
Jourtimmmar totalt



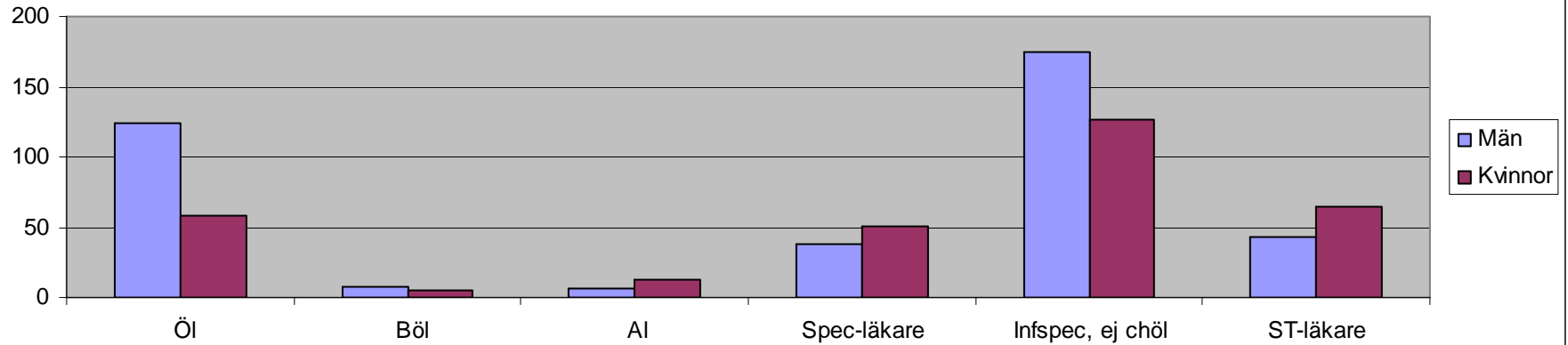
Jourtimmar



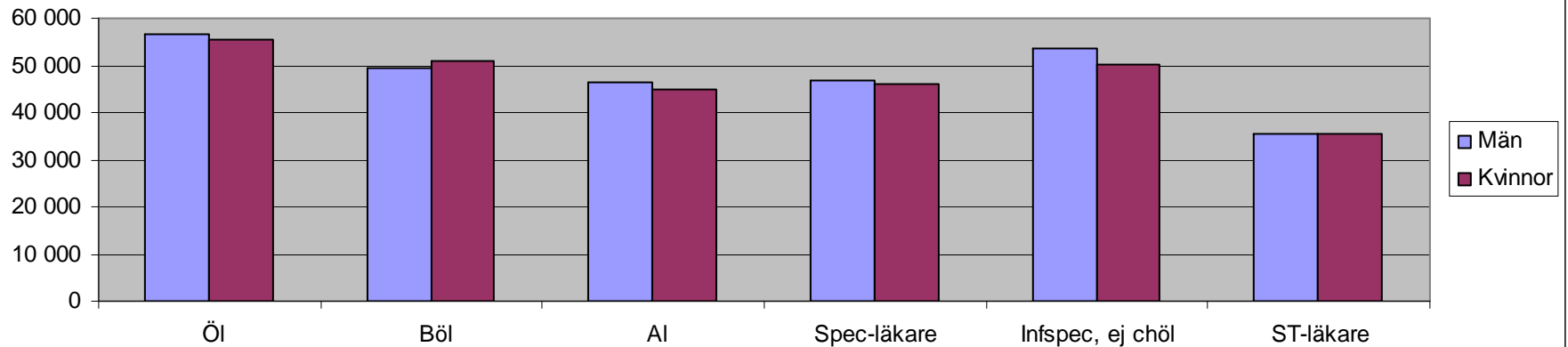
Jourtimmar/1000 inv



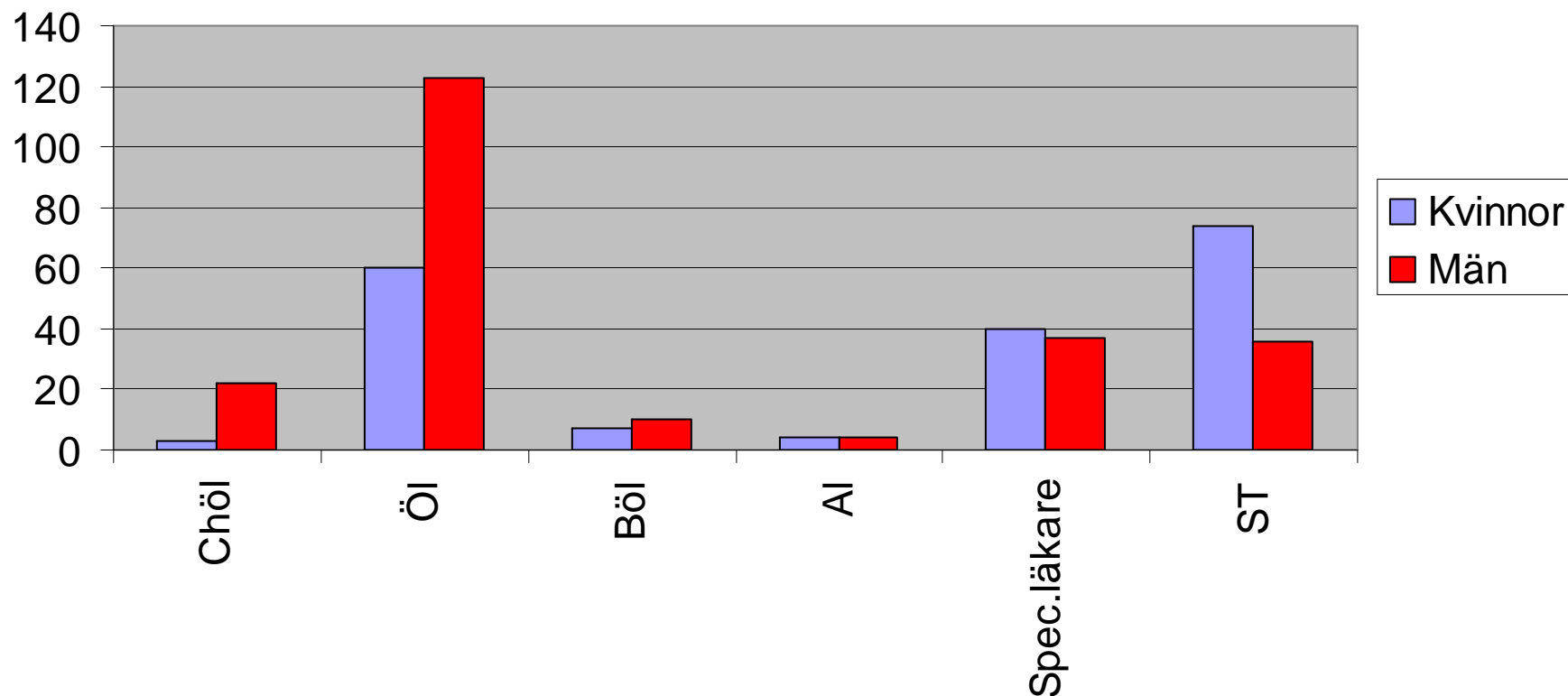
Antal/kategori o kön



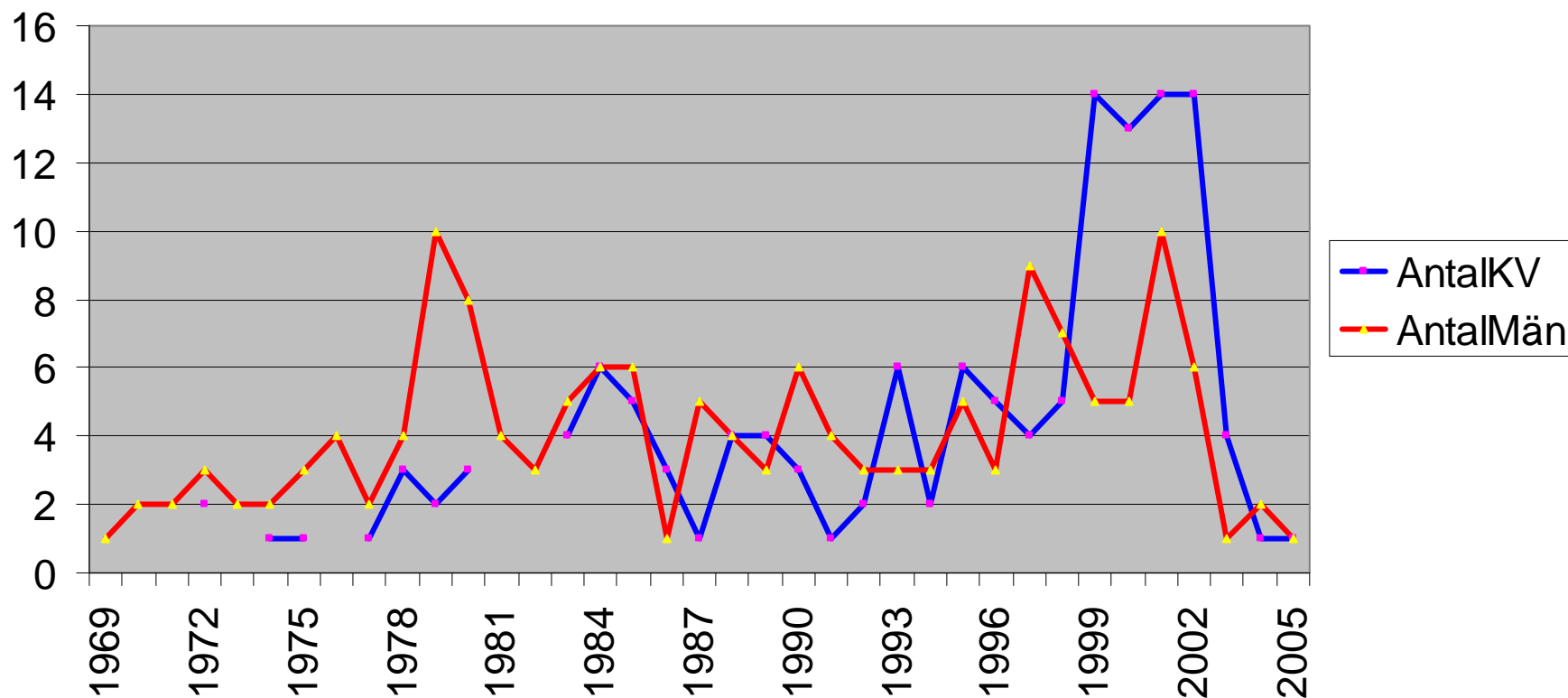
Medellön/kategori o kön



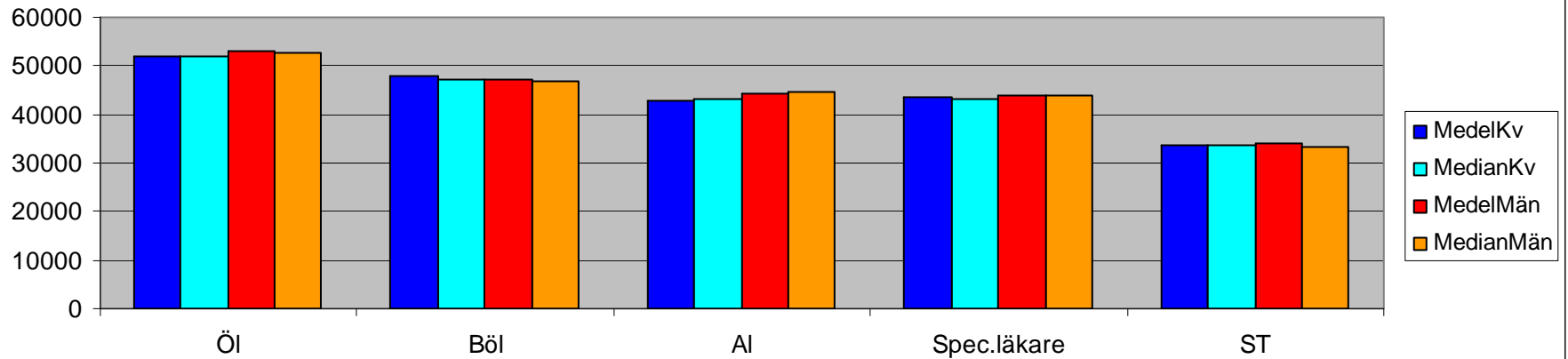
Könsfördelning tjänstenivåer



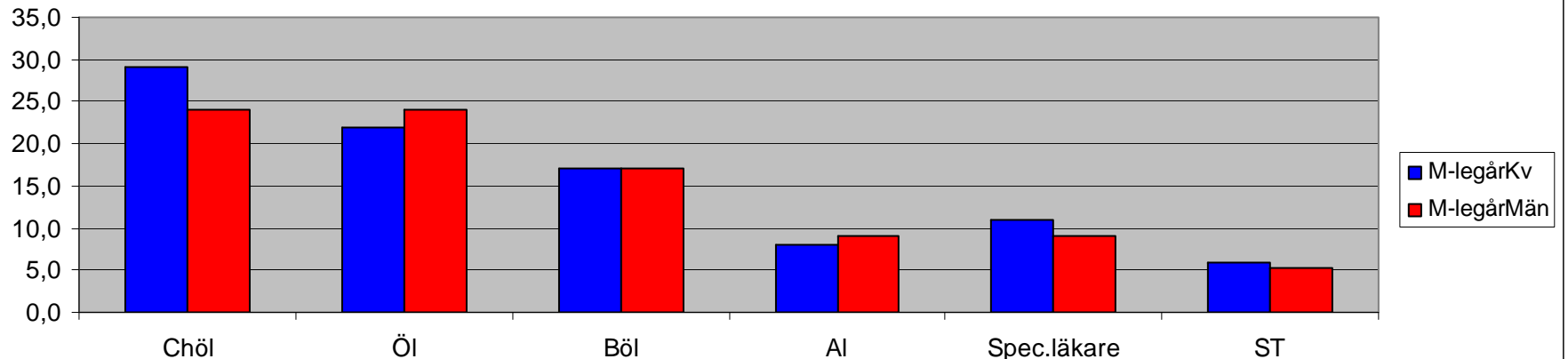
Könsfördelning per legår



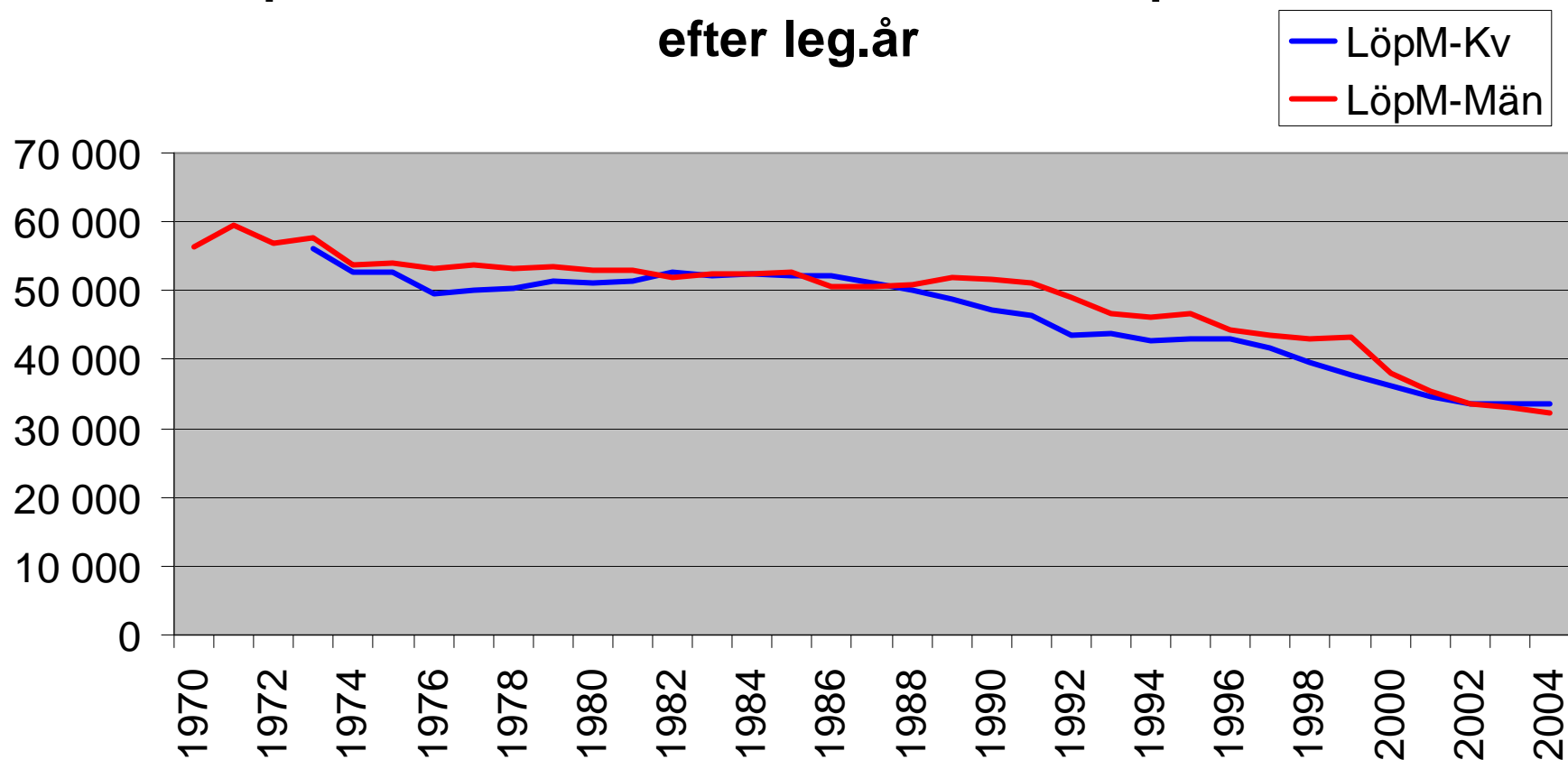
Lön per kategori o kön



Tid som legitimerad (2006-legår)

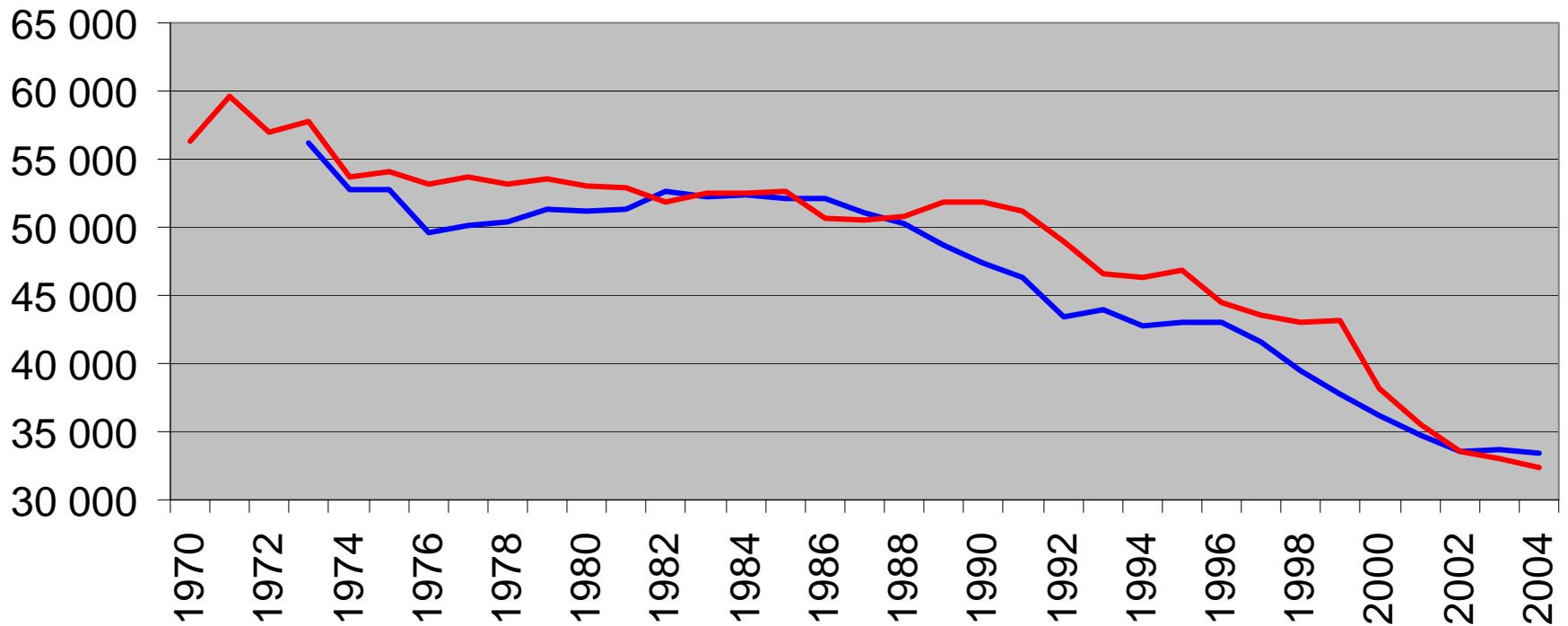


Löpande 3-års medelvärde lön män resp kvinnor efter leg.år

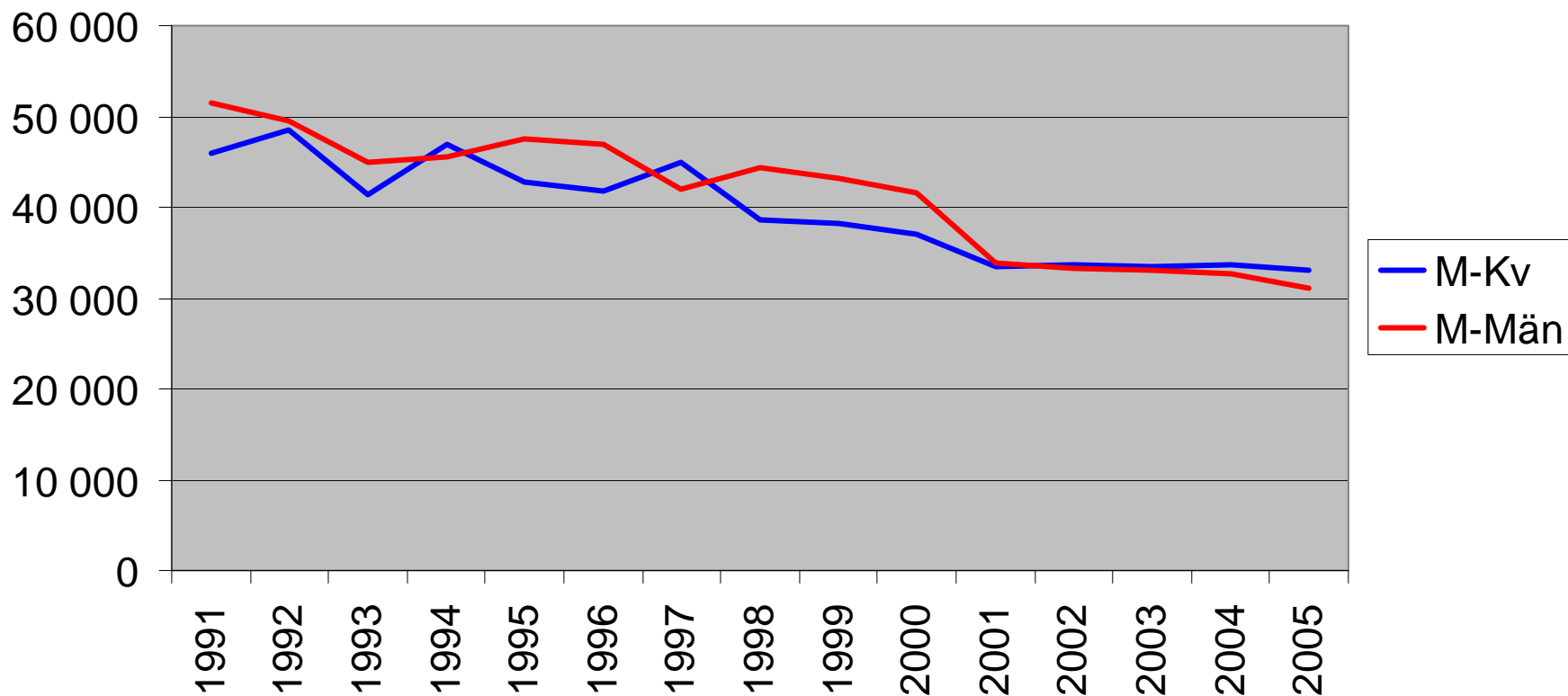


Löpande 3-års medelvärde lön män resp kvinnor efter leg.år

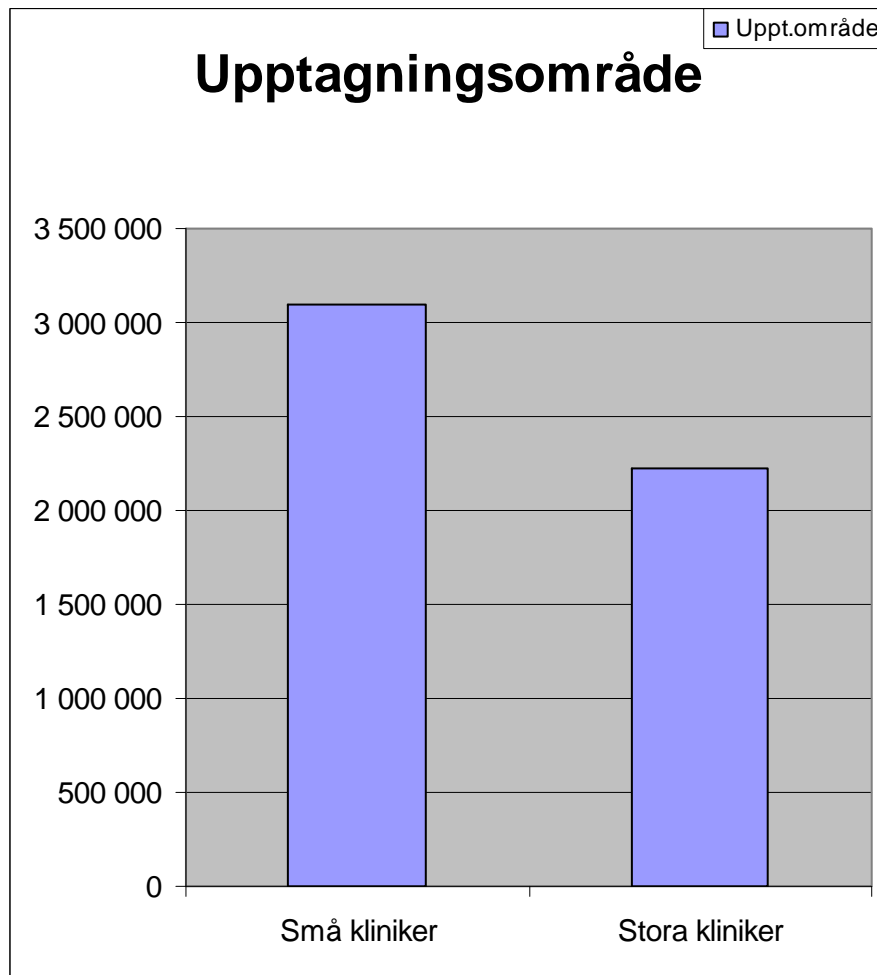
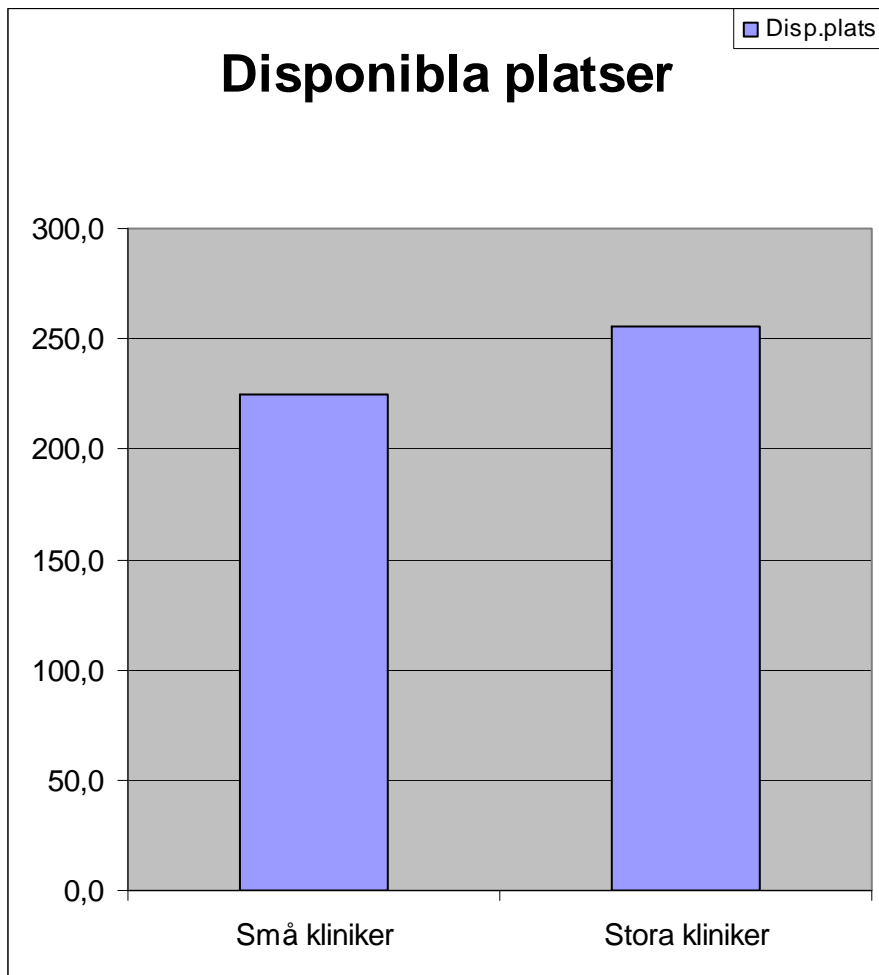
— LöpM-Kv
— LöpM-Män



Medellön per legitimationsår

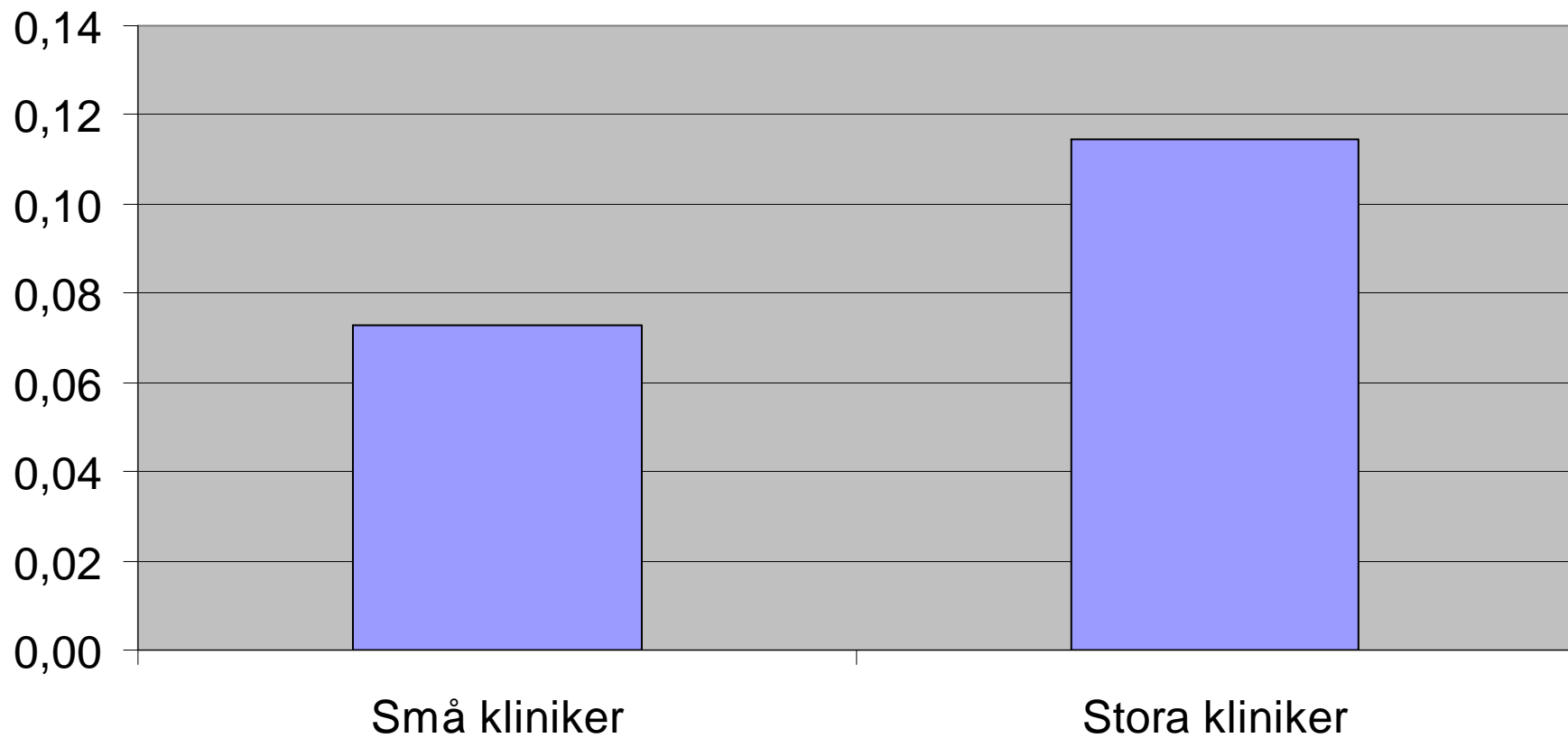


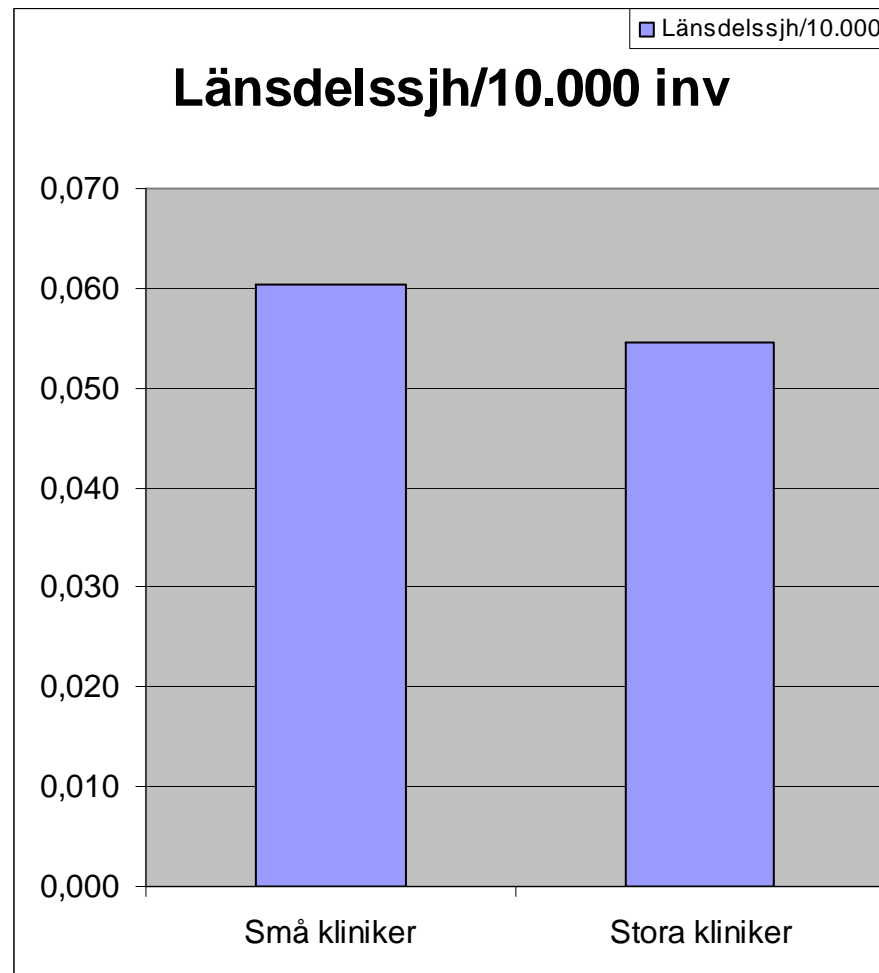
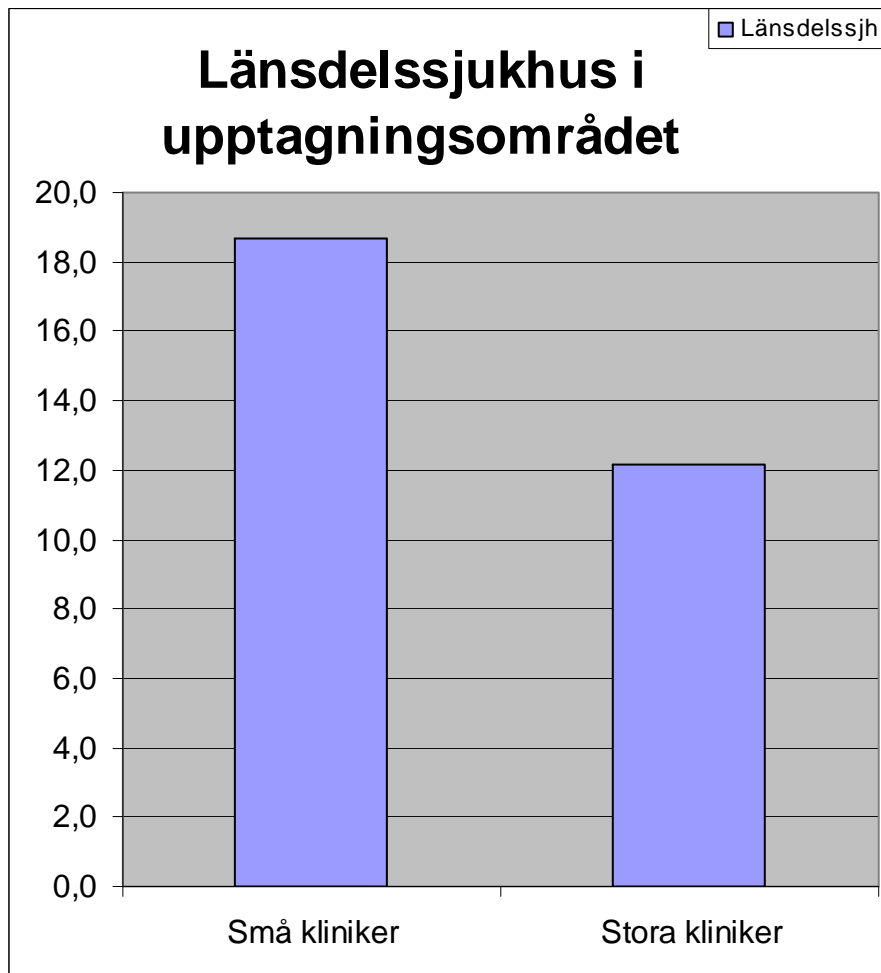
Disponibla platser/1000 inv			
Små kliniker		Stora kliniker	
Klinik	Disp.plats/1000	Klinik	Disp.plats/1000
Sunderby	0,060	Karlstad	0,096
Borås	0,061	Norrköping	0,099
Halmstad	0,065	Lund	0,104
Uddevalla	0,065	Örebro	0,107
Helsingborg	0,073	Kristianstad	0,114
Sundsvall	0,074	Falun	0,115
Göteborg	0,074	Östersund	0,124
Jönköping	0,075	Karlskrona	0,133
Västerås	0,089	Malmö	0,135
Skövde	0,091	Visby	0,149
Medel	0,073	Medel	0,114

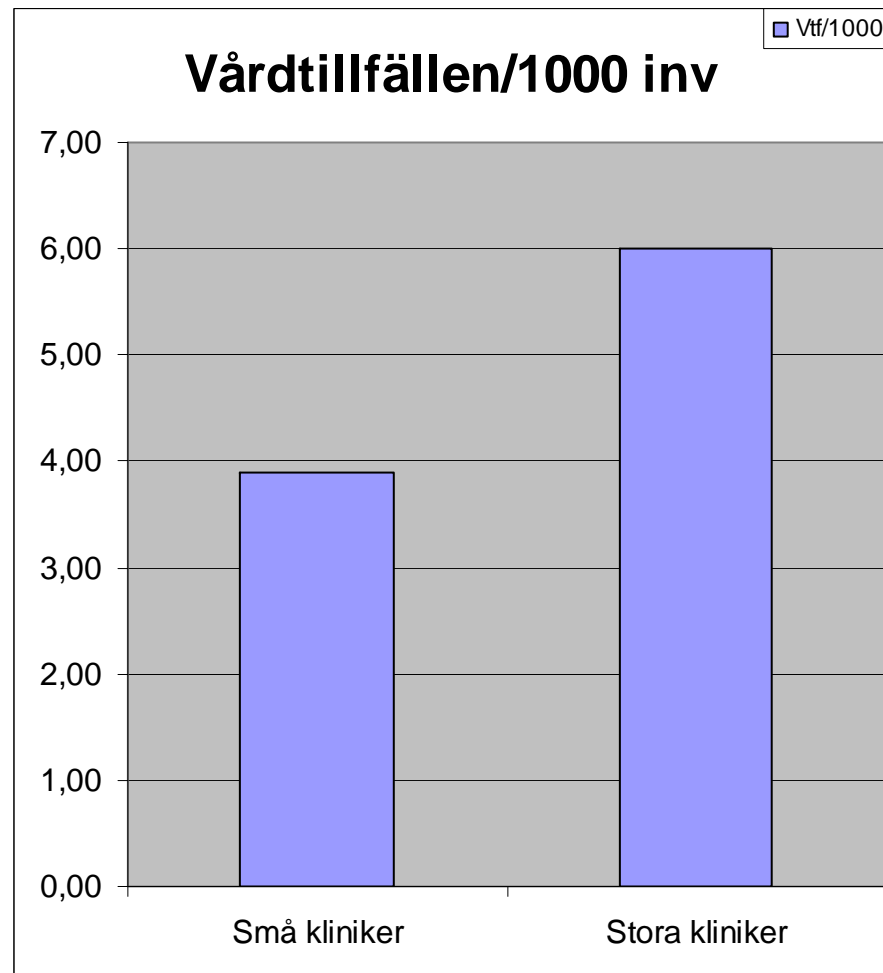
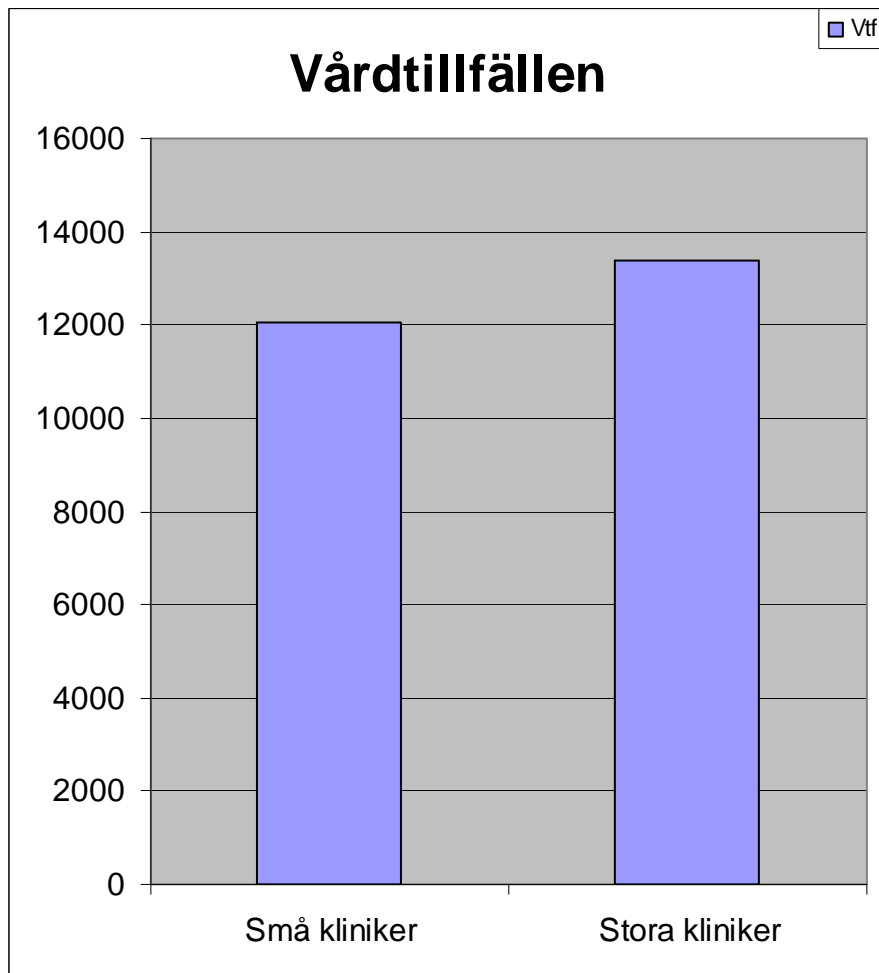


Disponibla platser/1000 inv

Disp.plats/1000

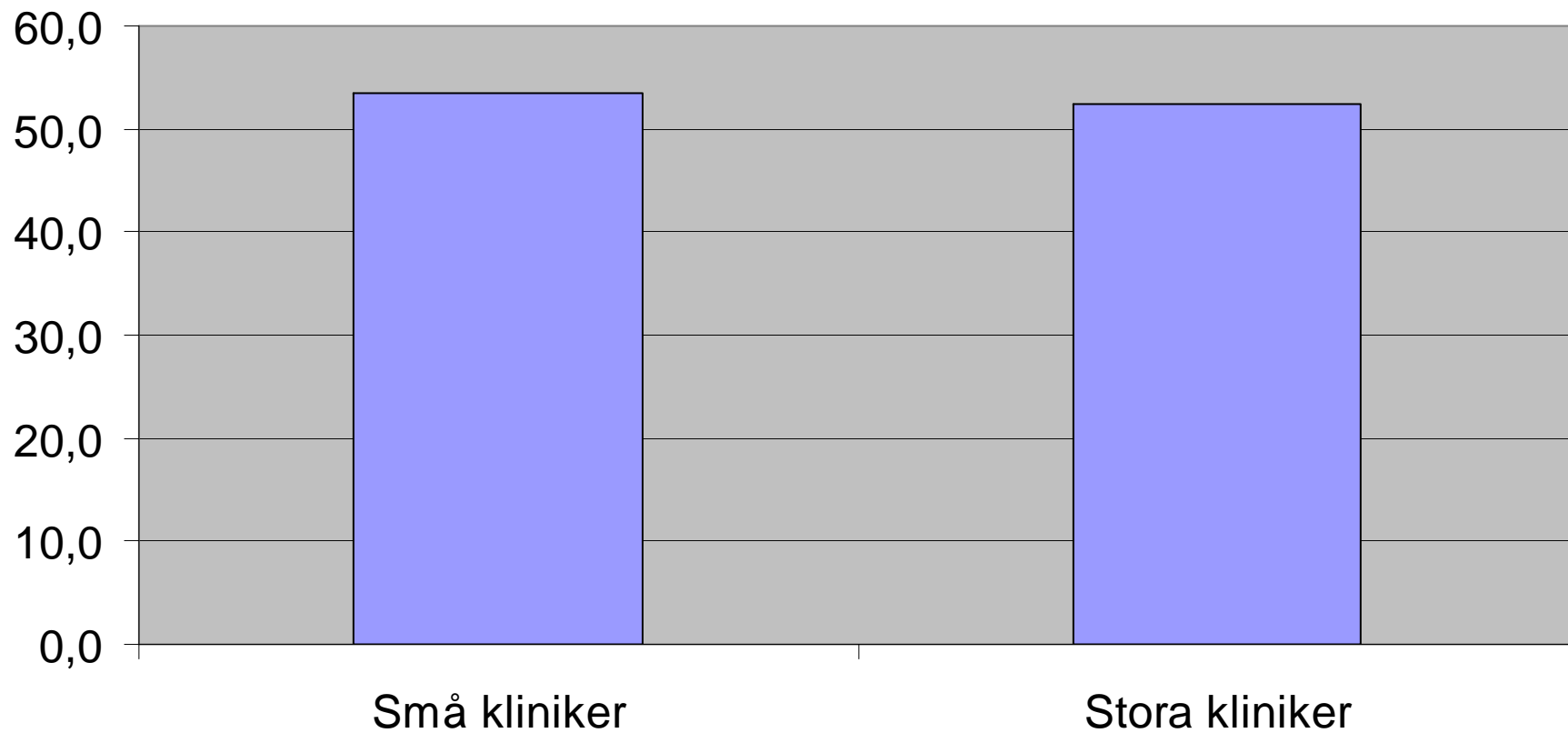


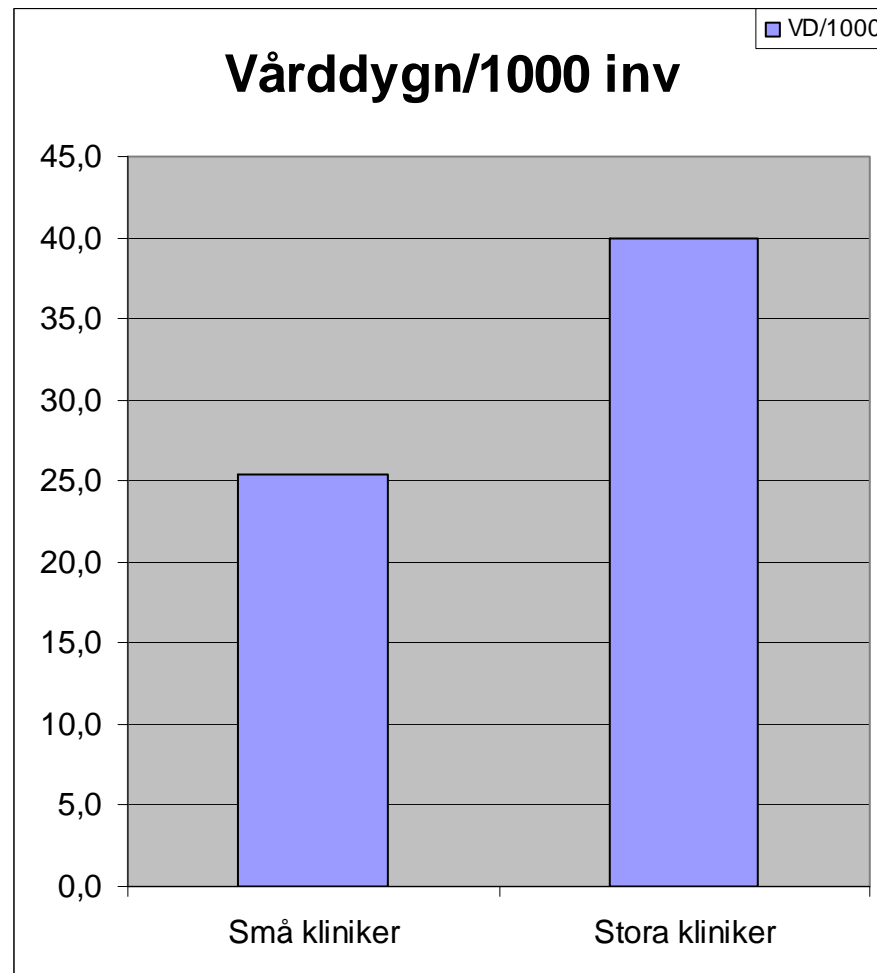
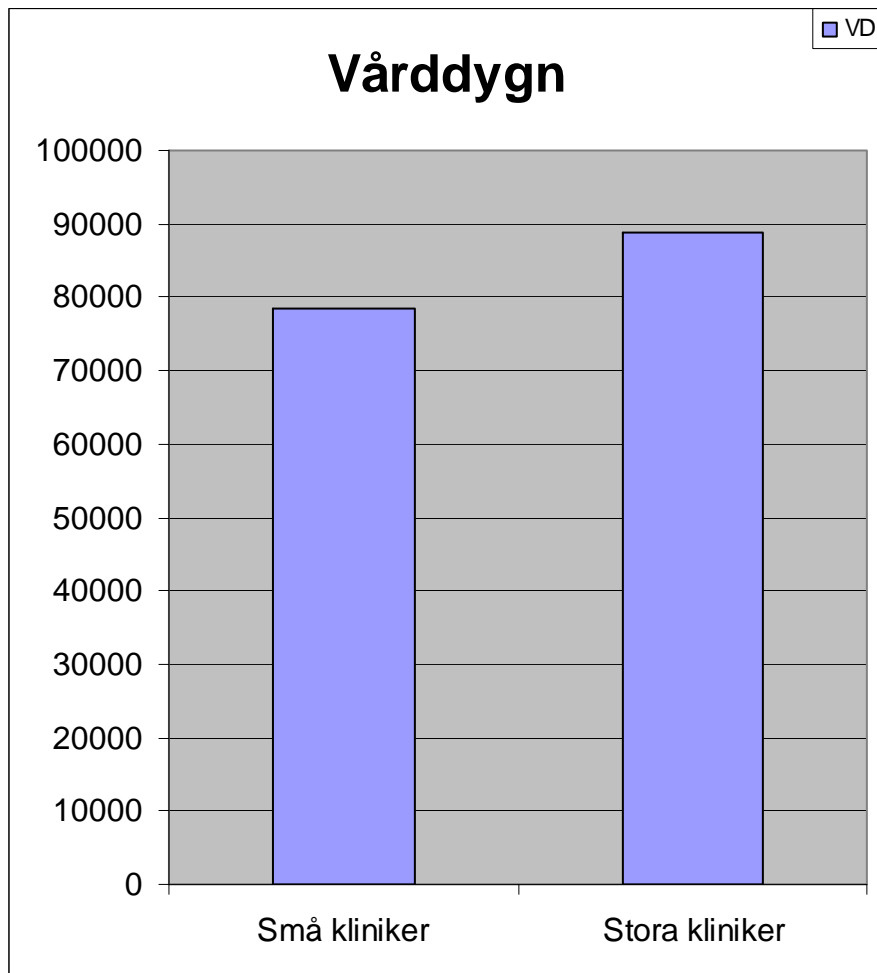




Vårdtillfällen/disp. plats

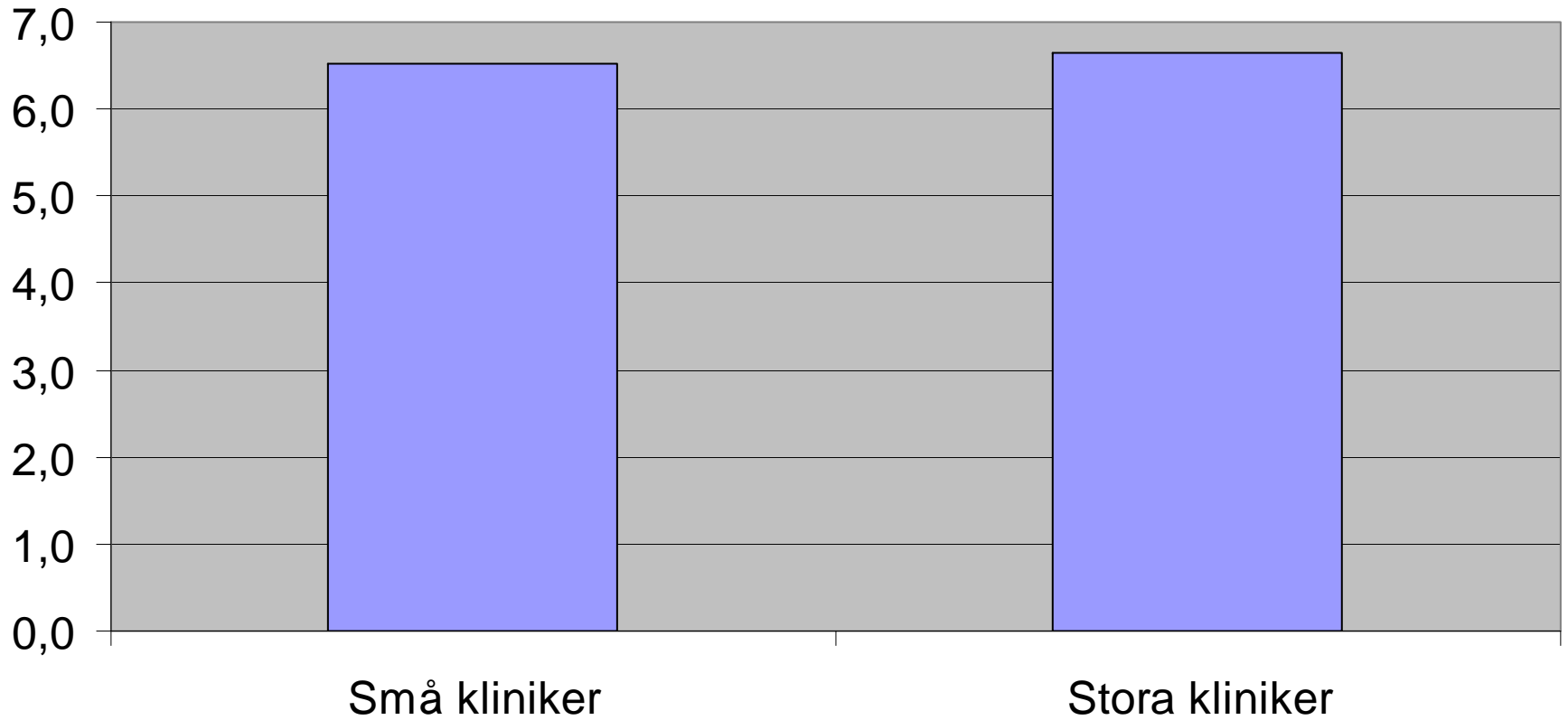
Vtf/disp.plats





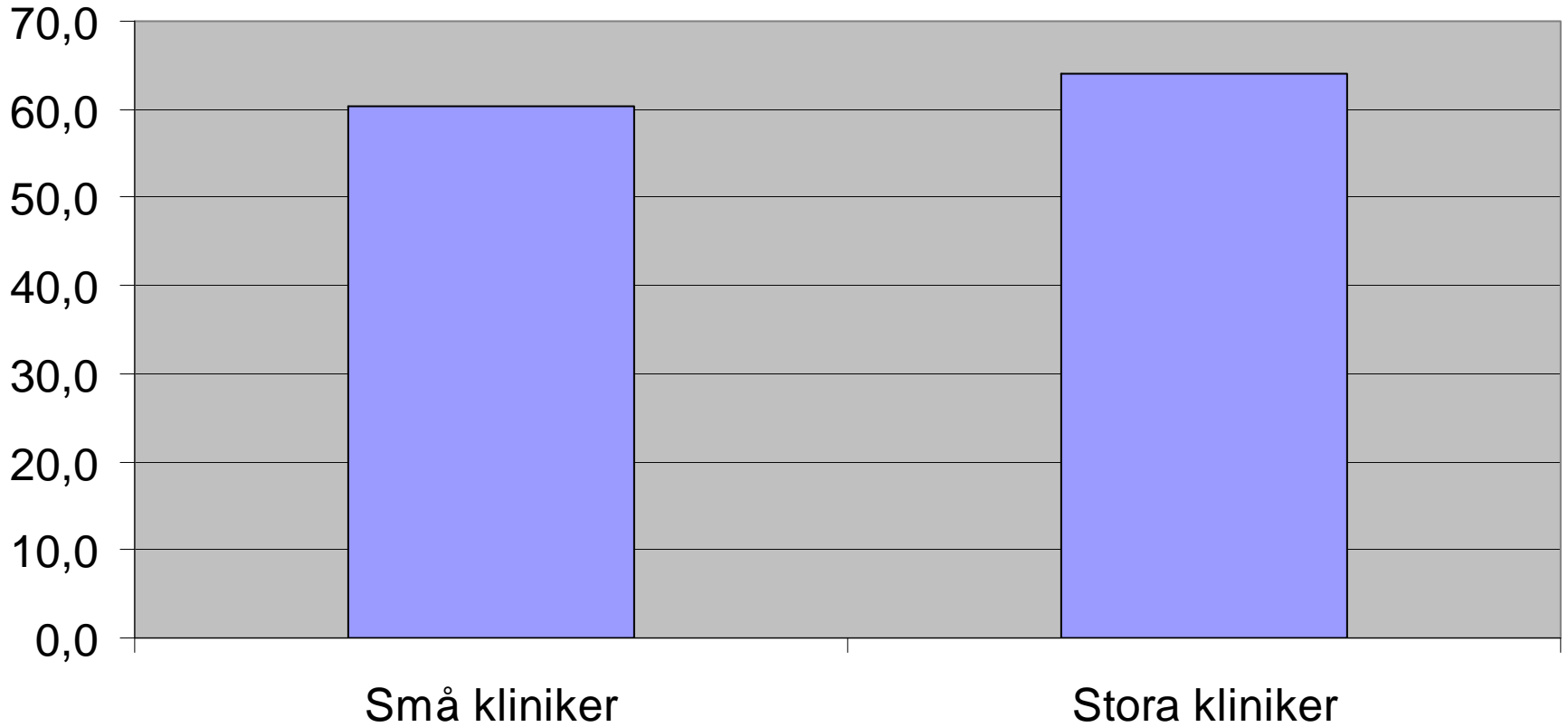
Medelvårdtid

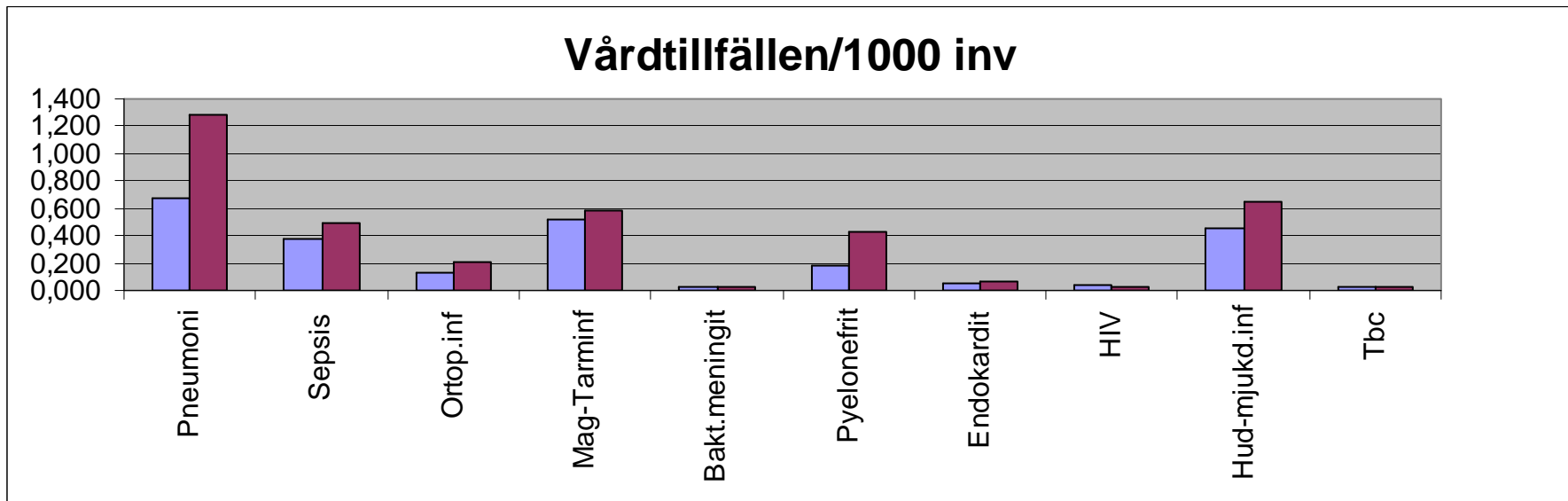
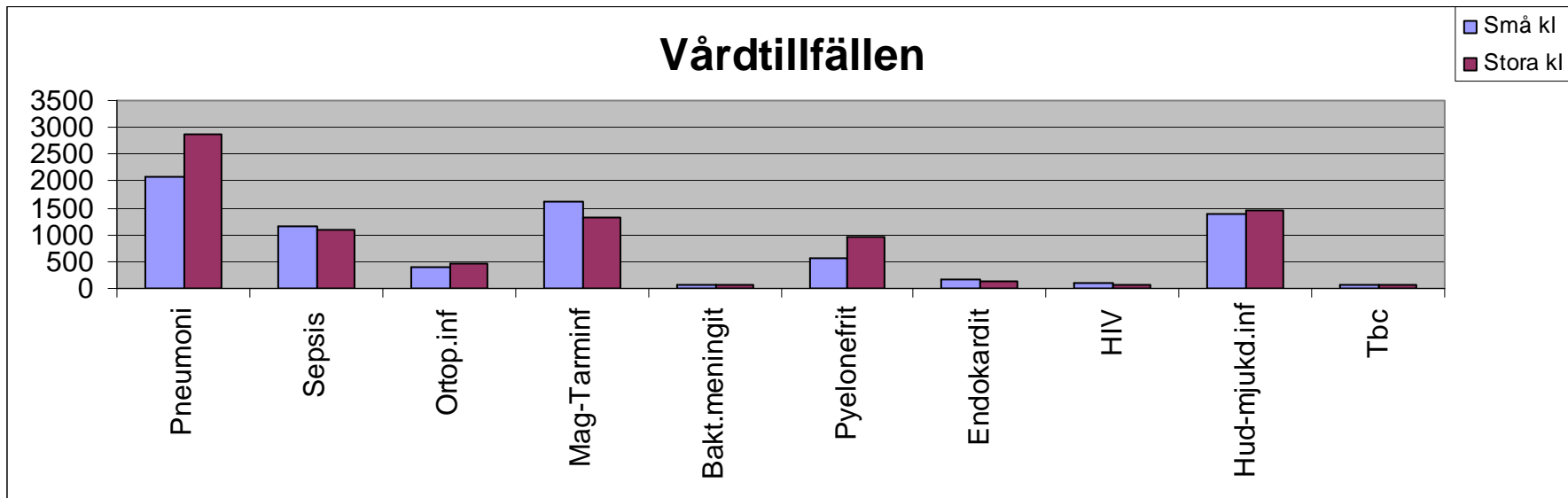
■ Medelvårdtid

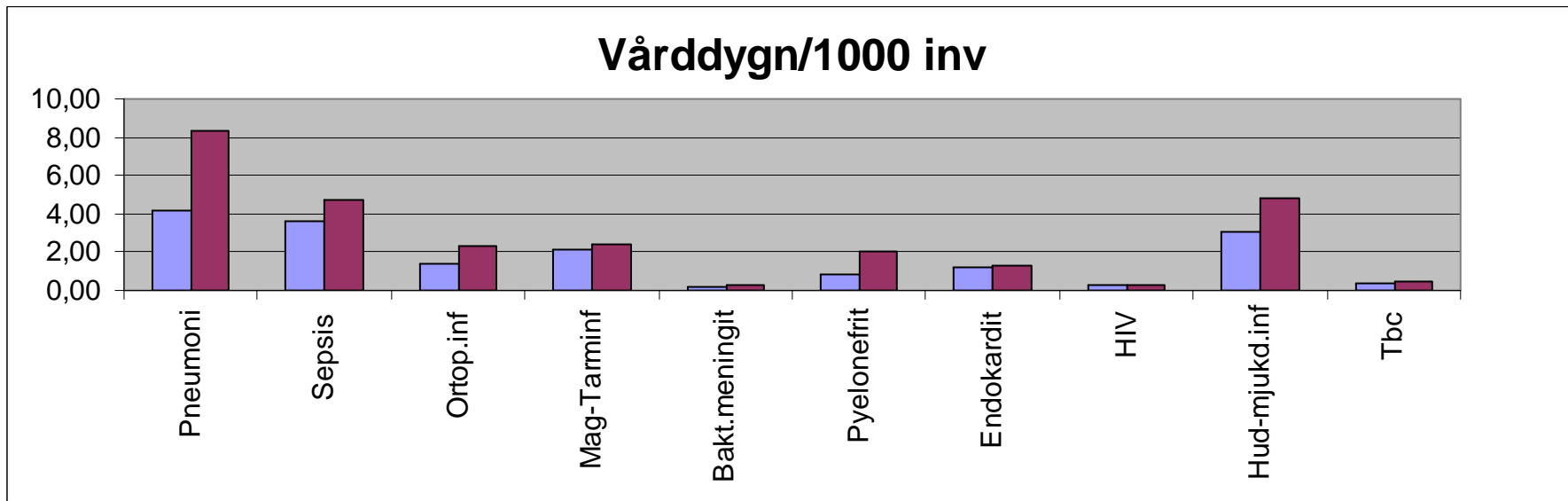
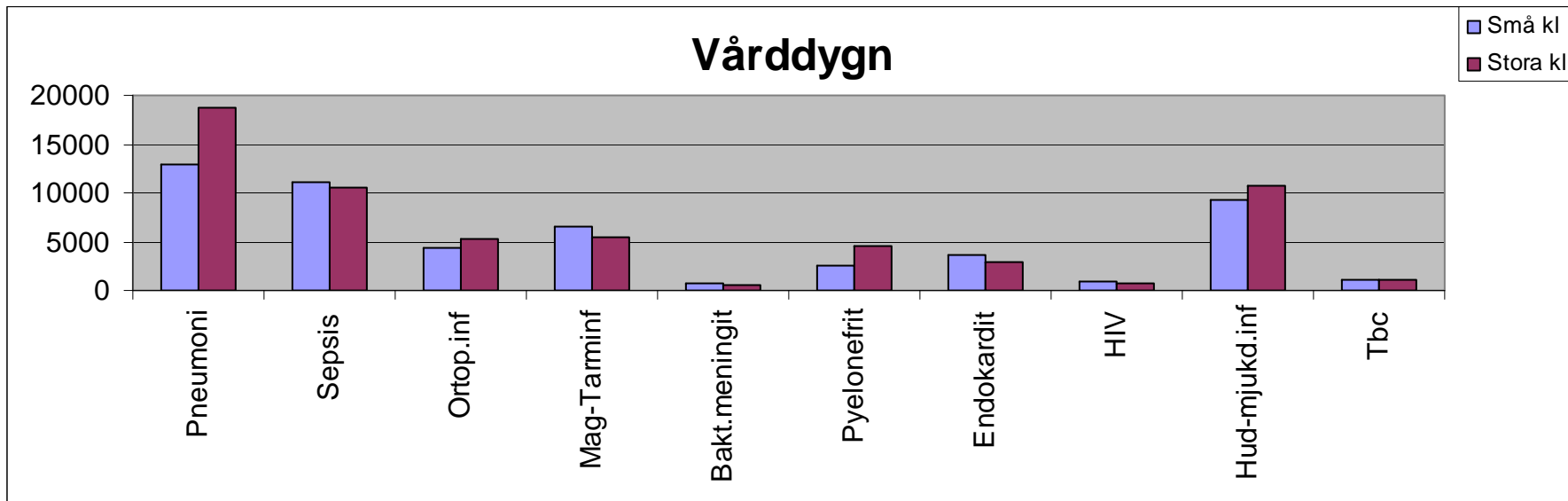


Medelålder

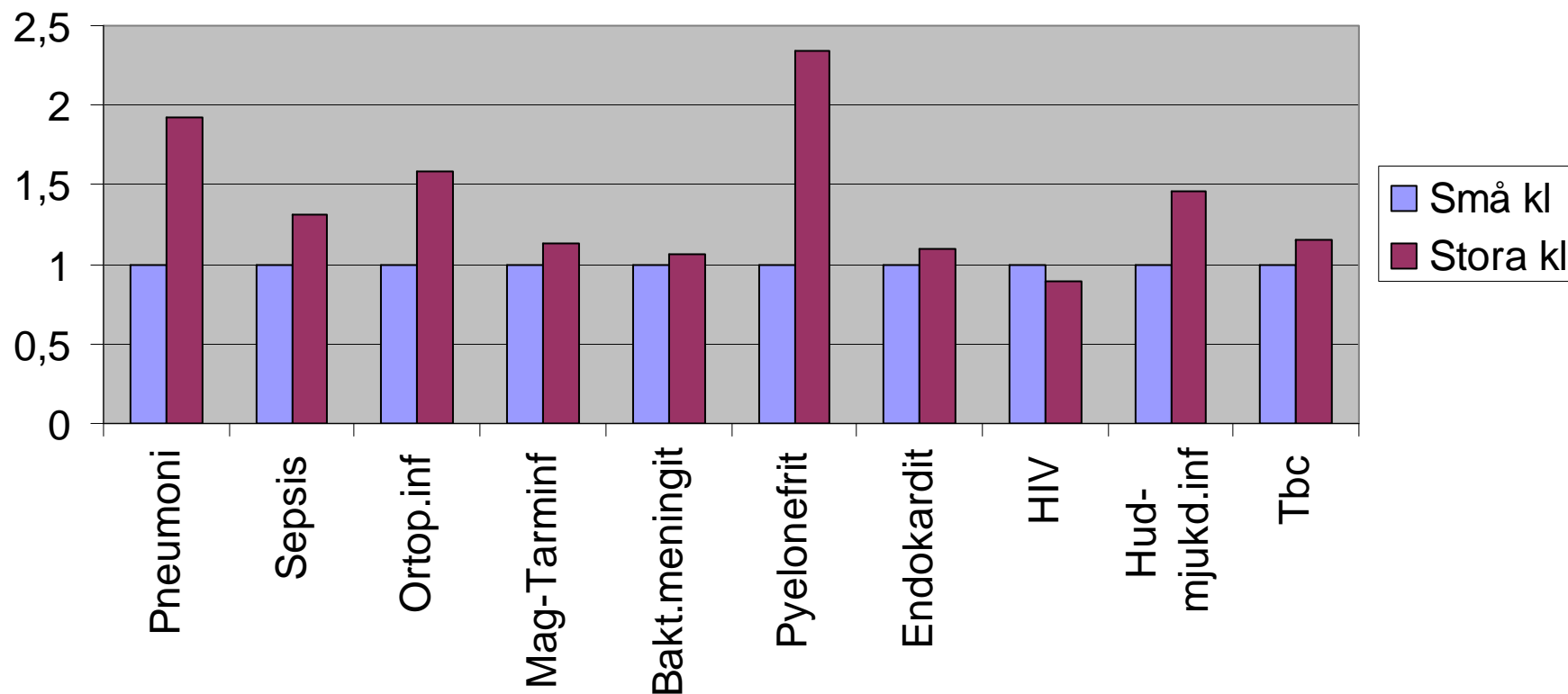
■ Medelålder



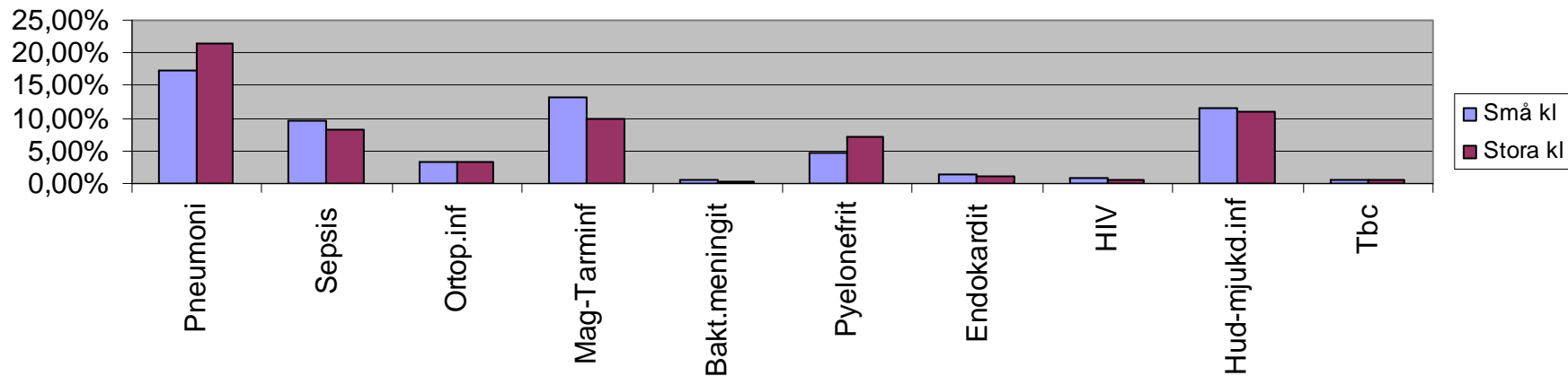




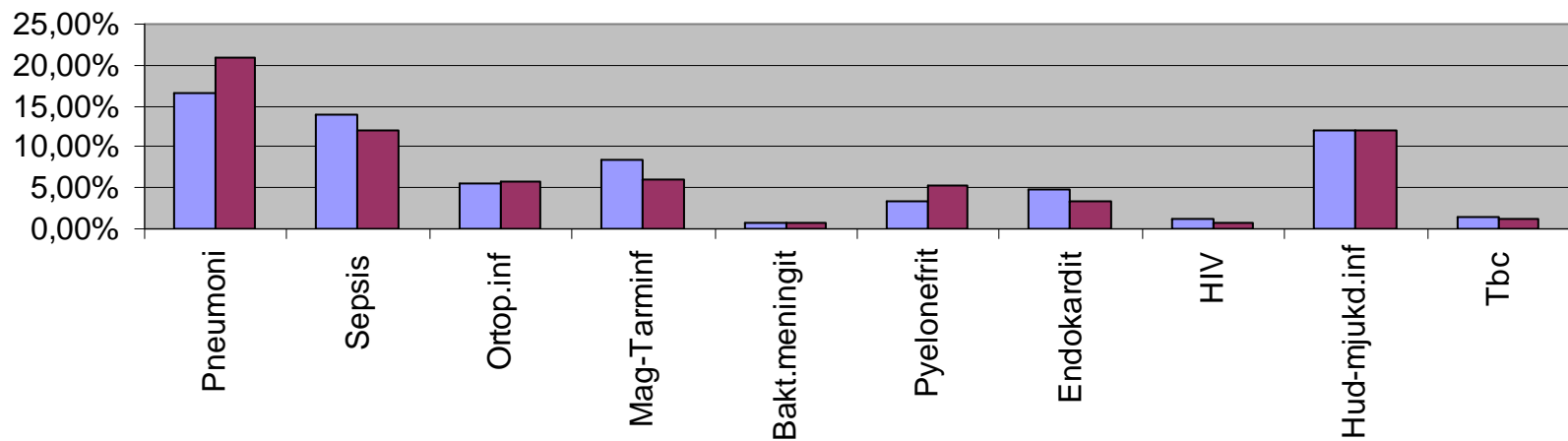
Vårdtillfällen/1000 inv. Stora relativt små kliniker



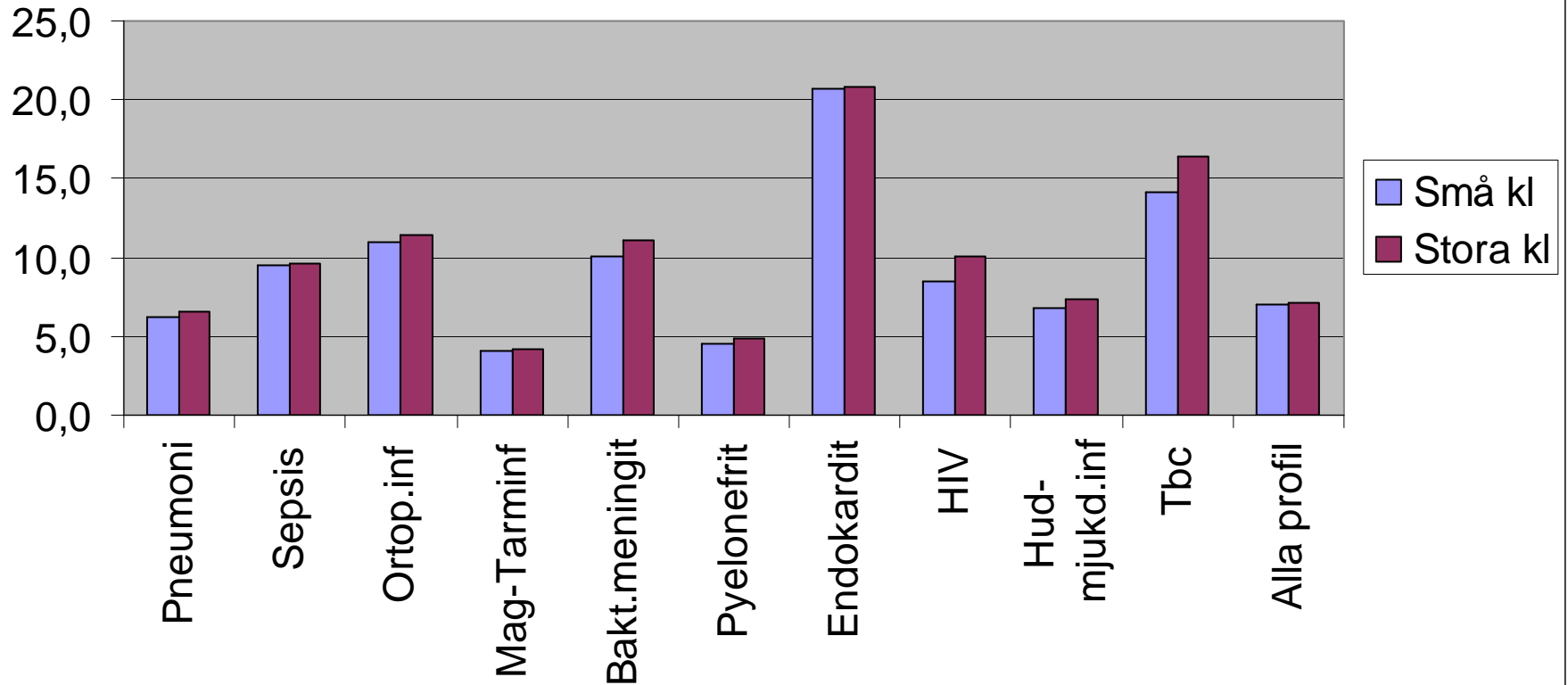
Andel (%) av klinikernas vårdtillfällen



Andel (%) av klinikernas vårddygn



Medelvårdtid



Slut

