

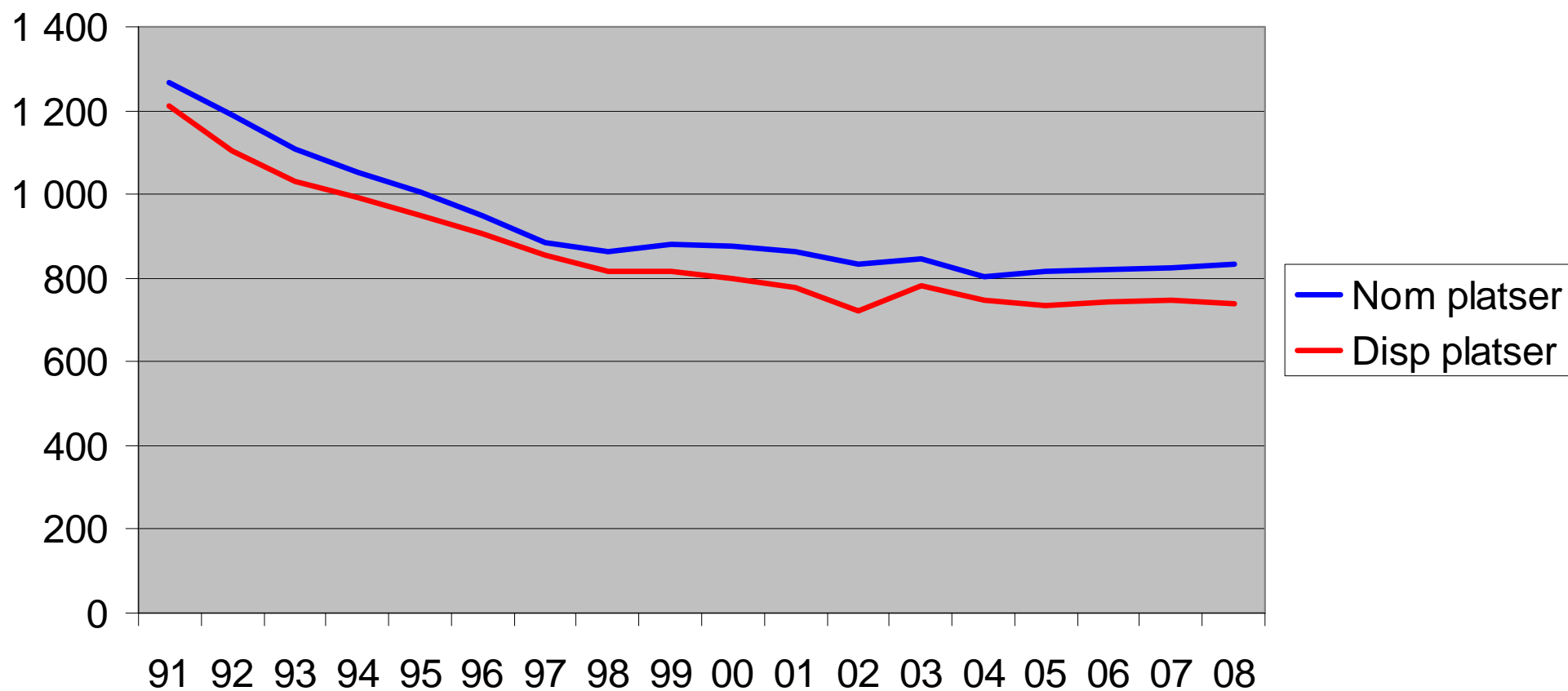
Infektionsläkarföreningens

Verksamhetsenkät

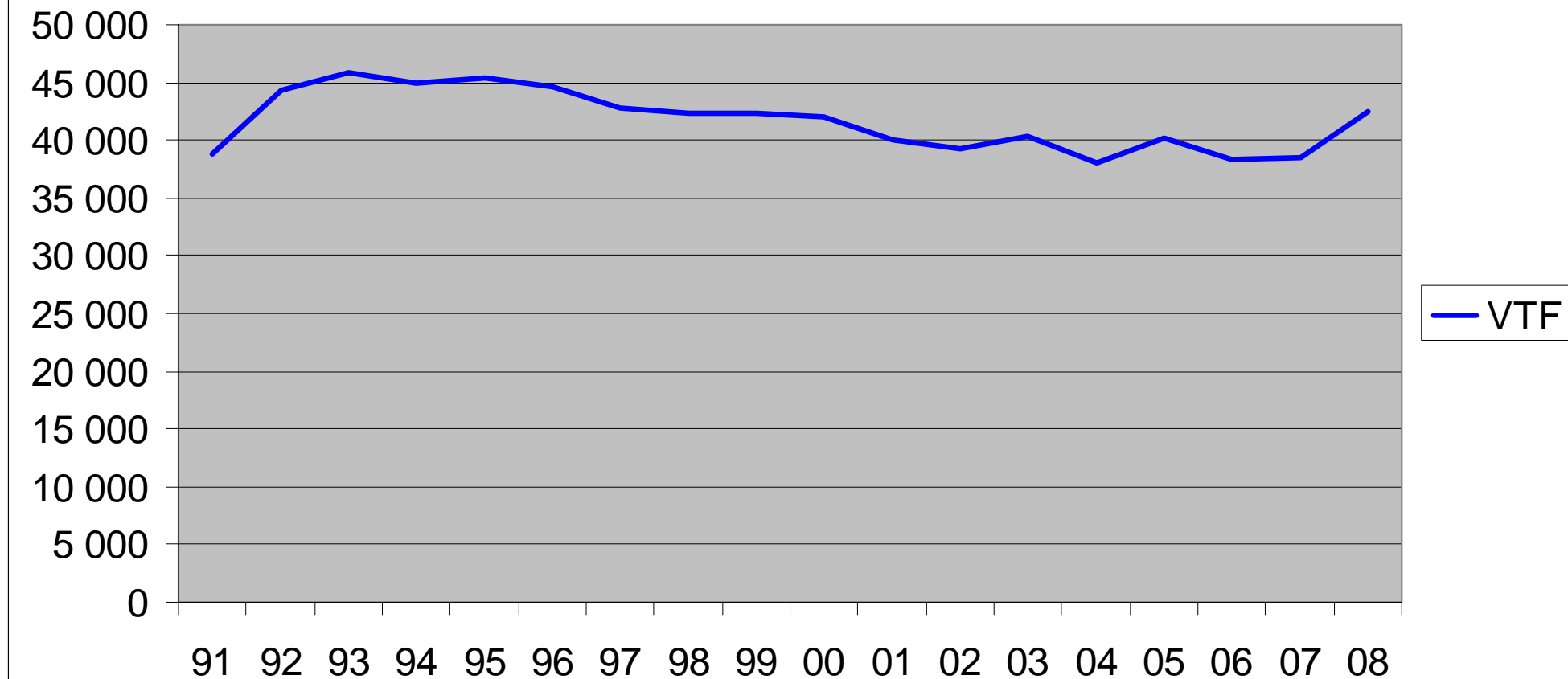
2009



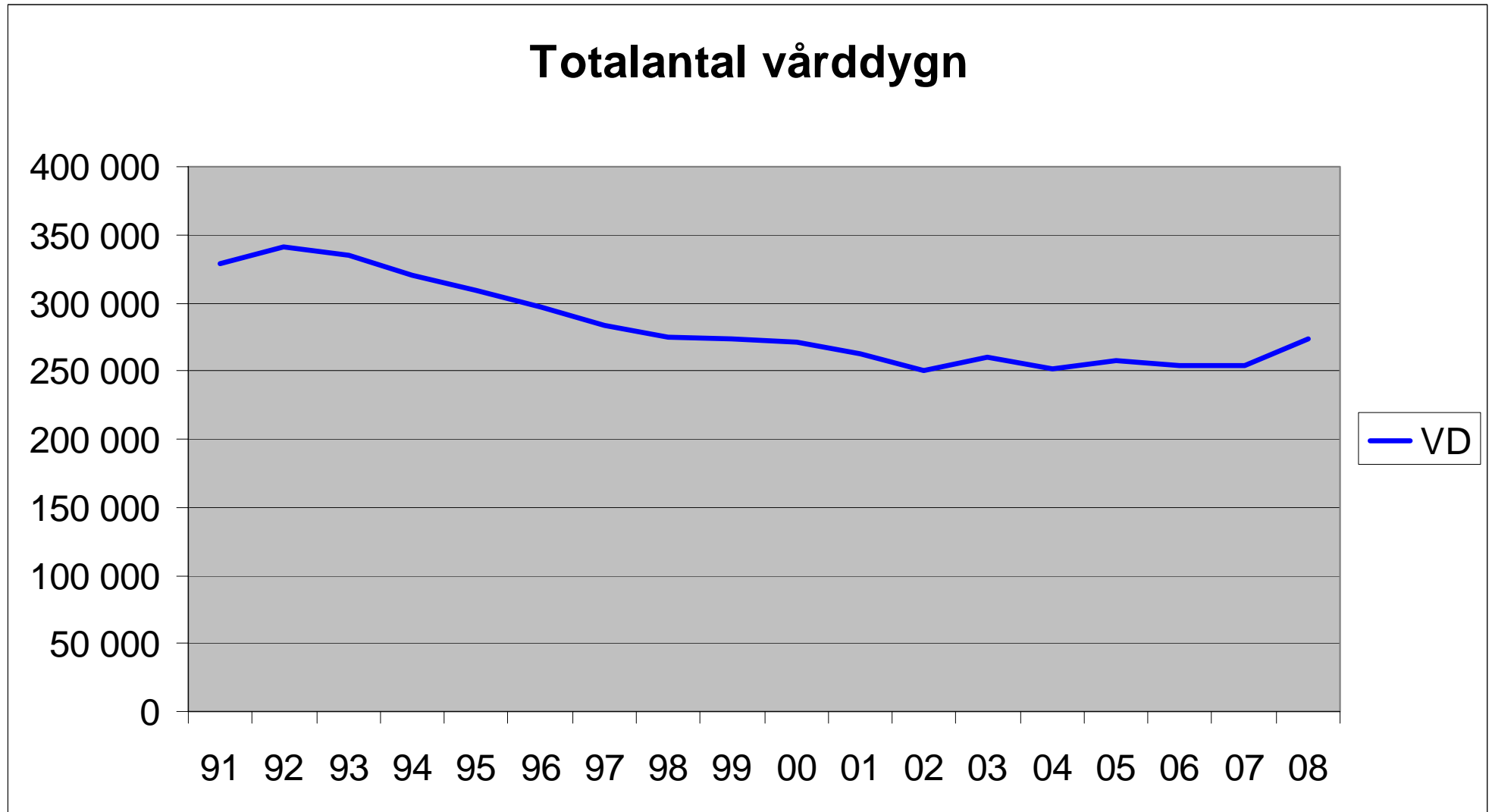
Totalantal nominella resp. disponibla platser



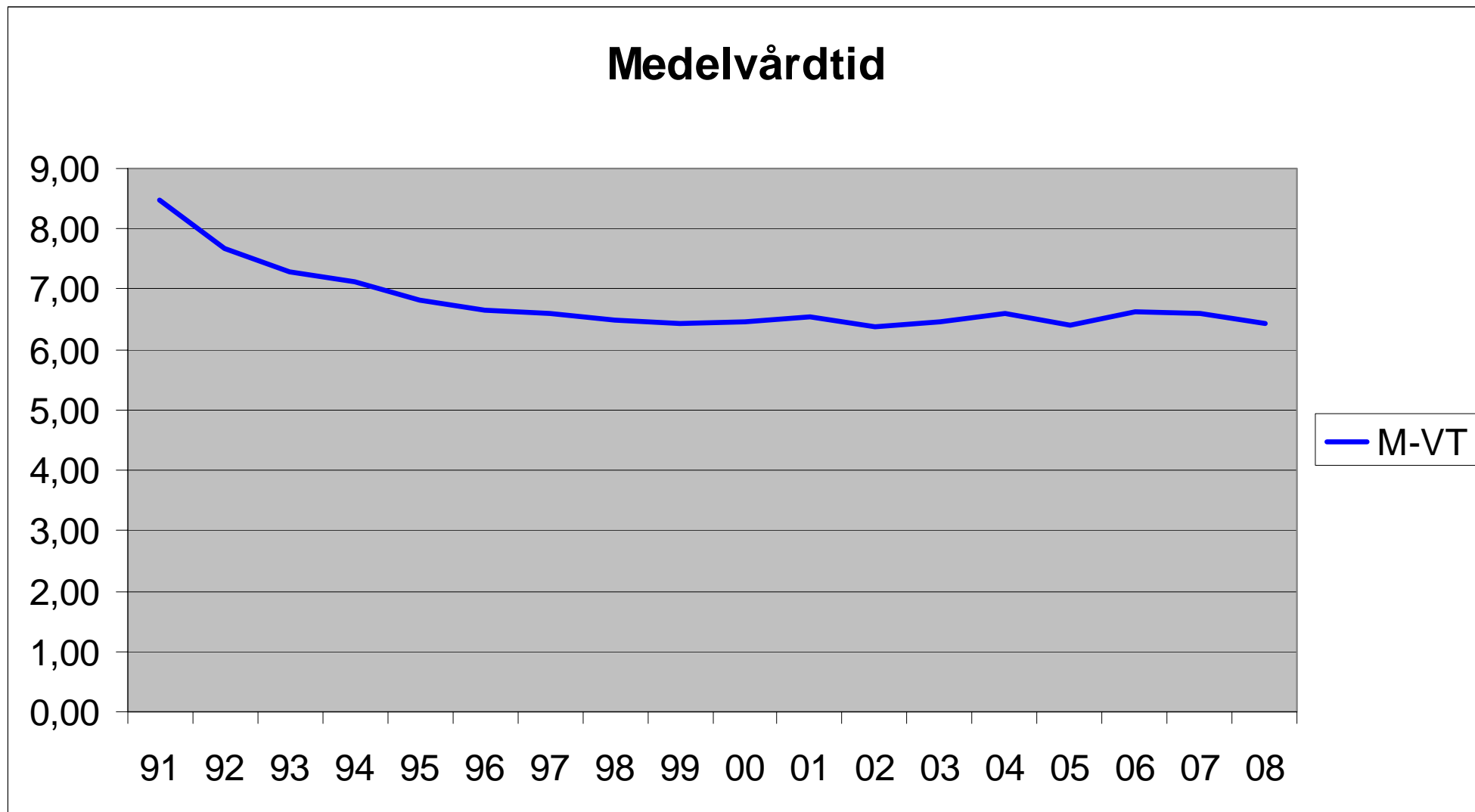
Totalantal vårdtillfällen



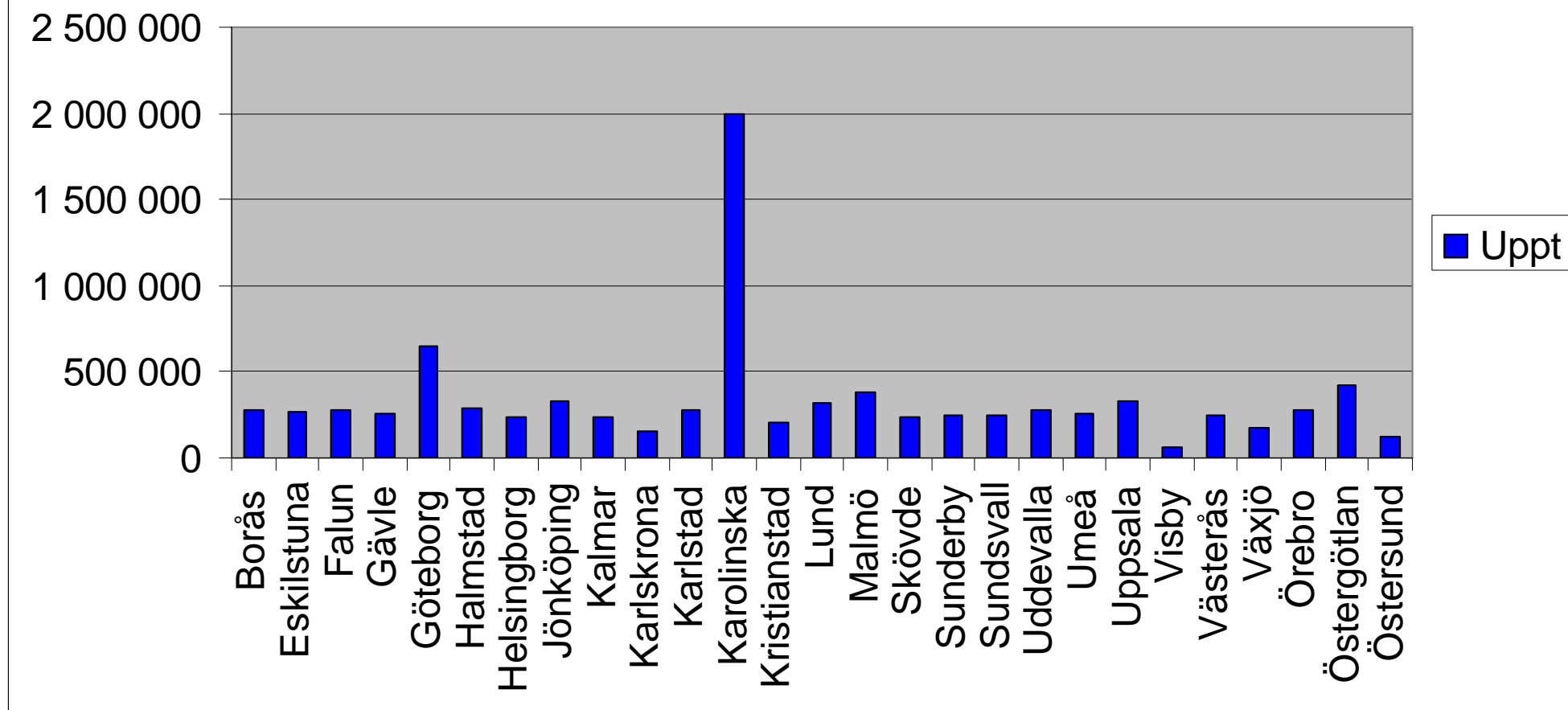
Totalantal vårddygn



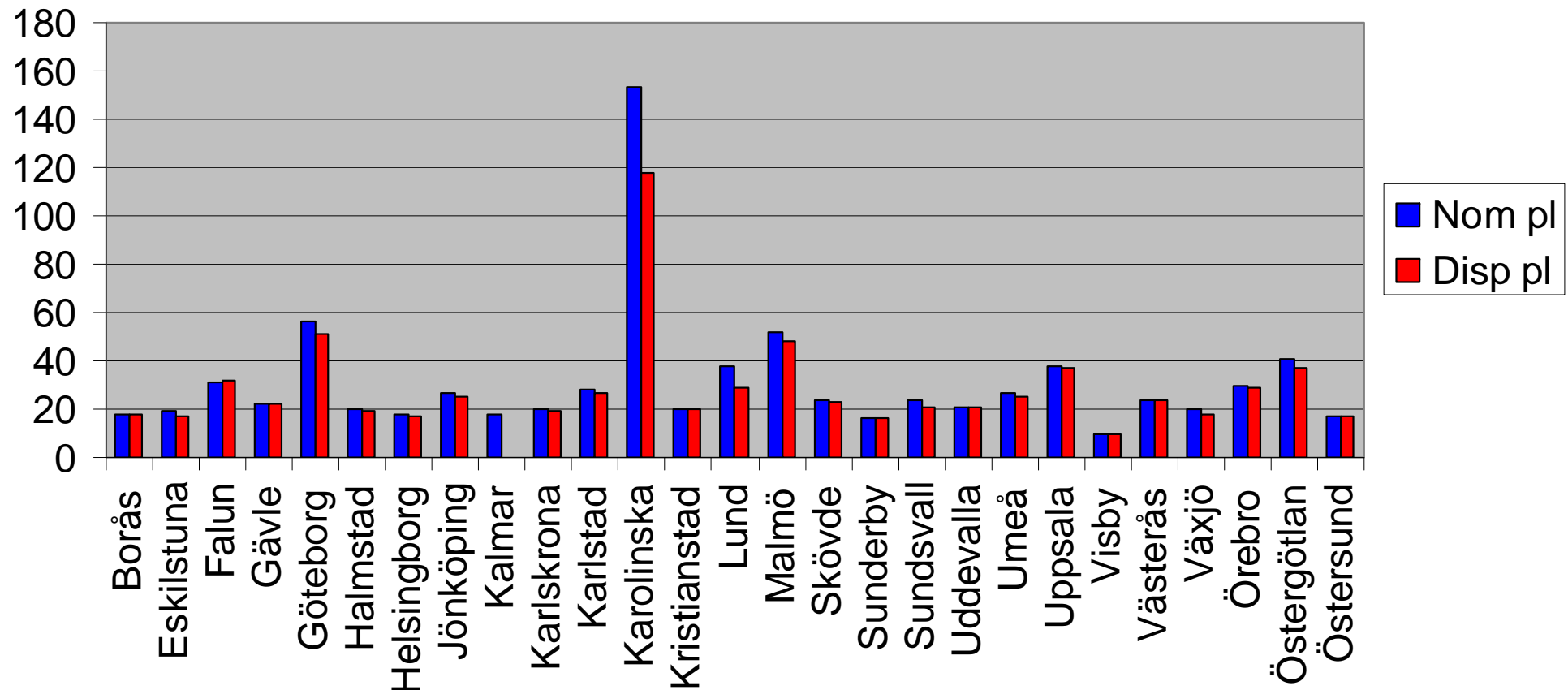
Medelvårdtid



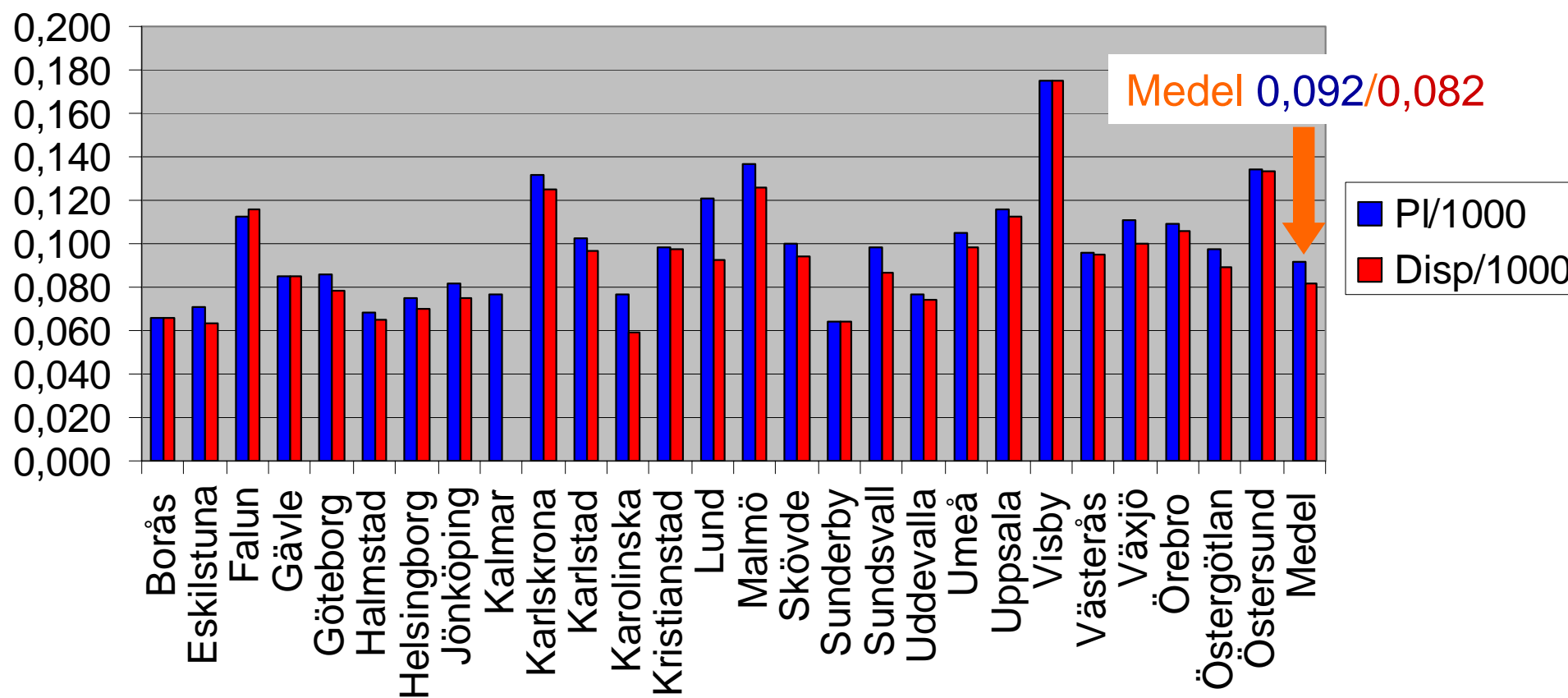
Upptagningsområde/klinik



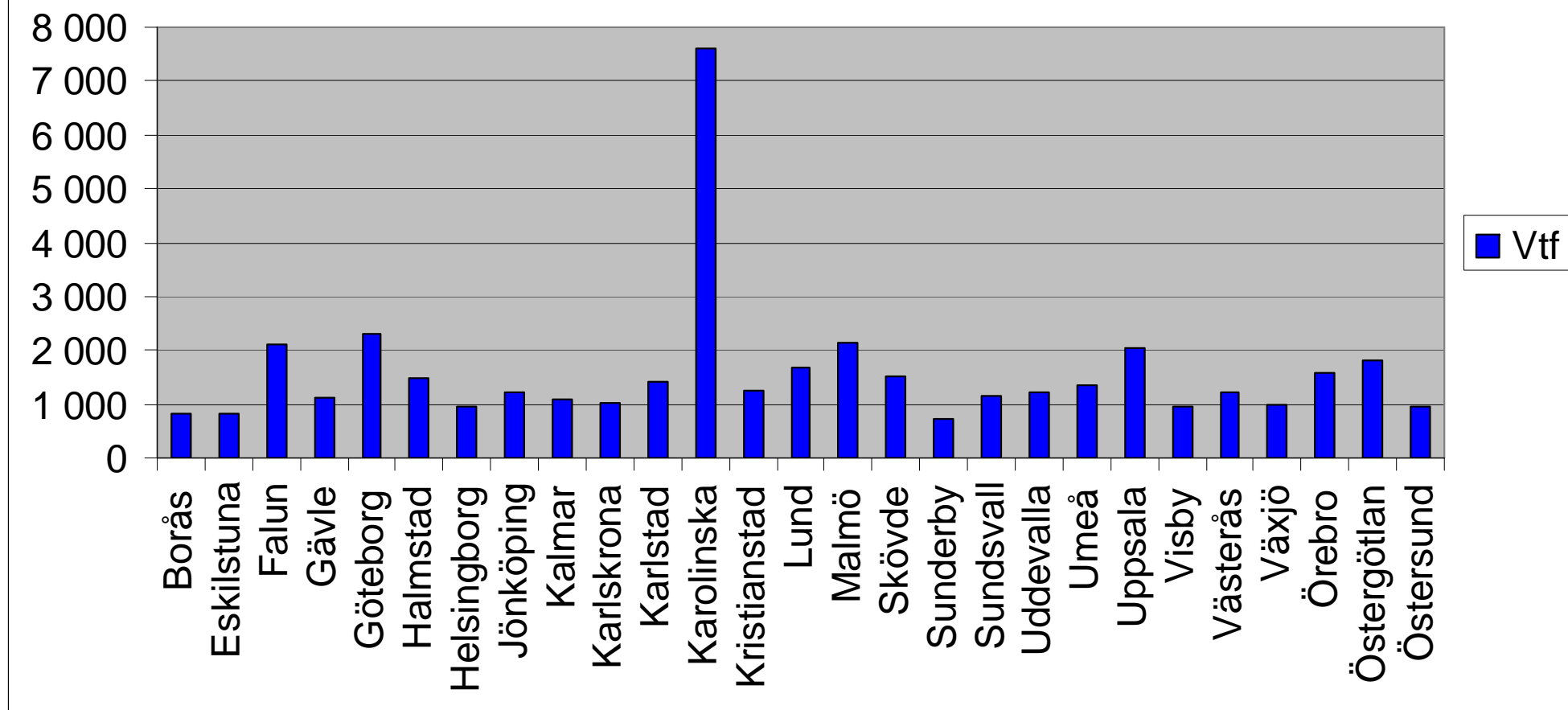
Nominell resp. disponibla platser/klinik



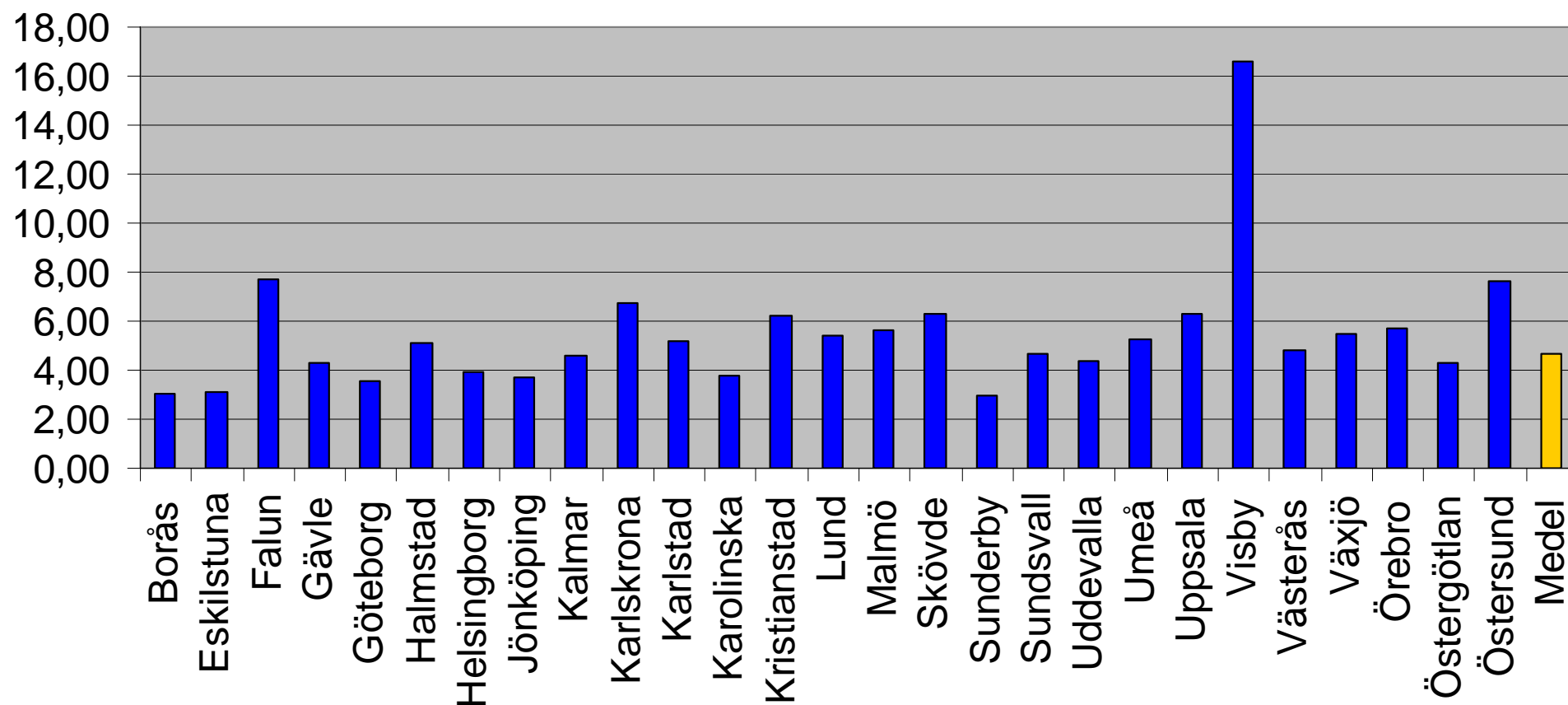
Nominella resp. disponibla platser/1000 inv.



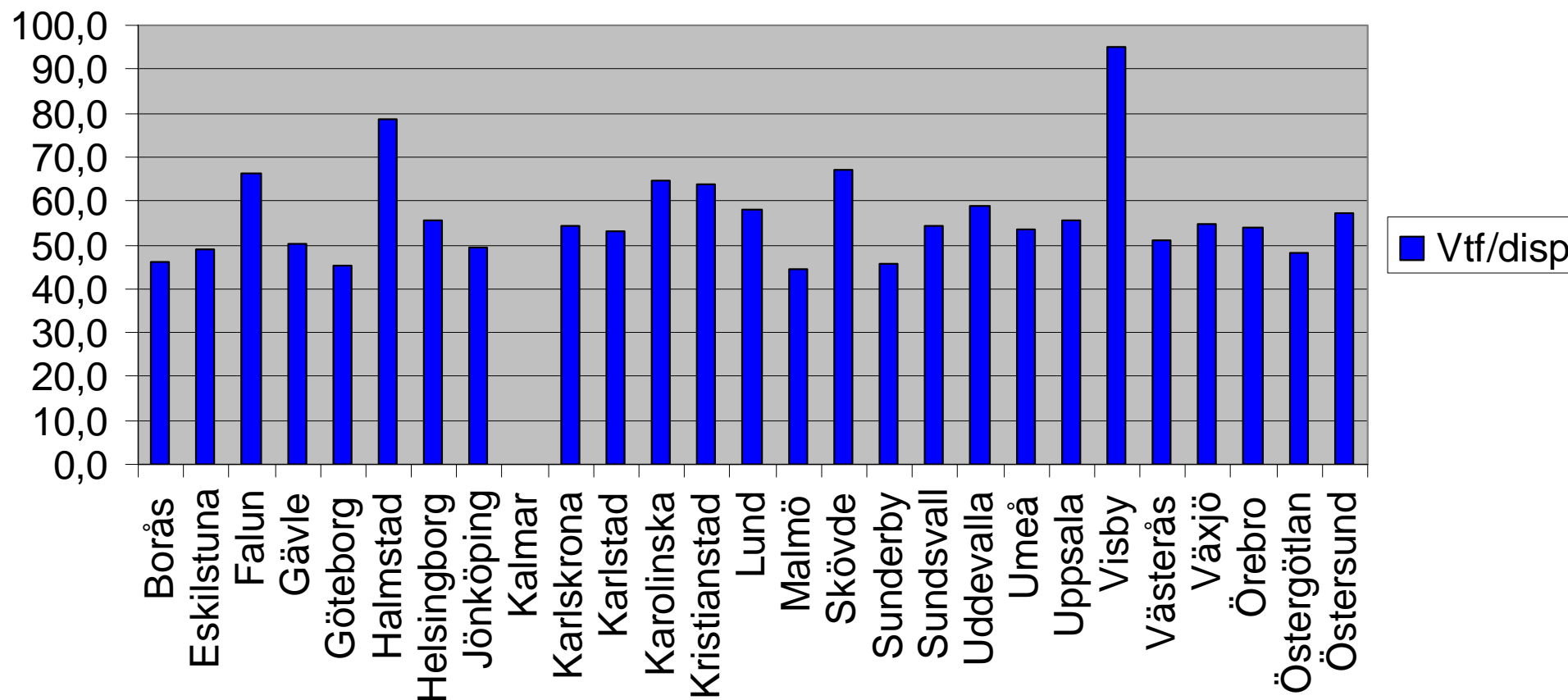
Vårdtillfällen



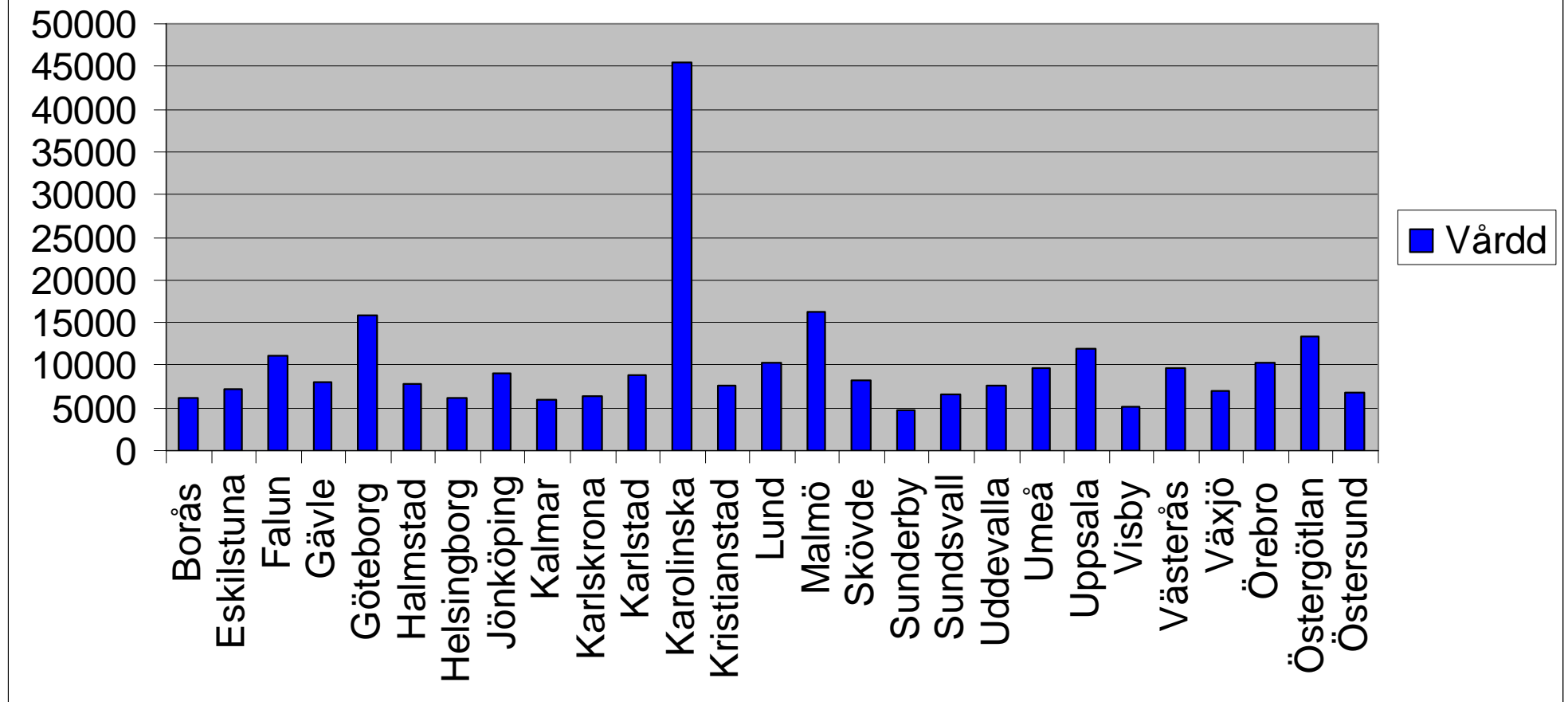
Vårdtillfällen per 1000 inv



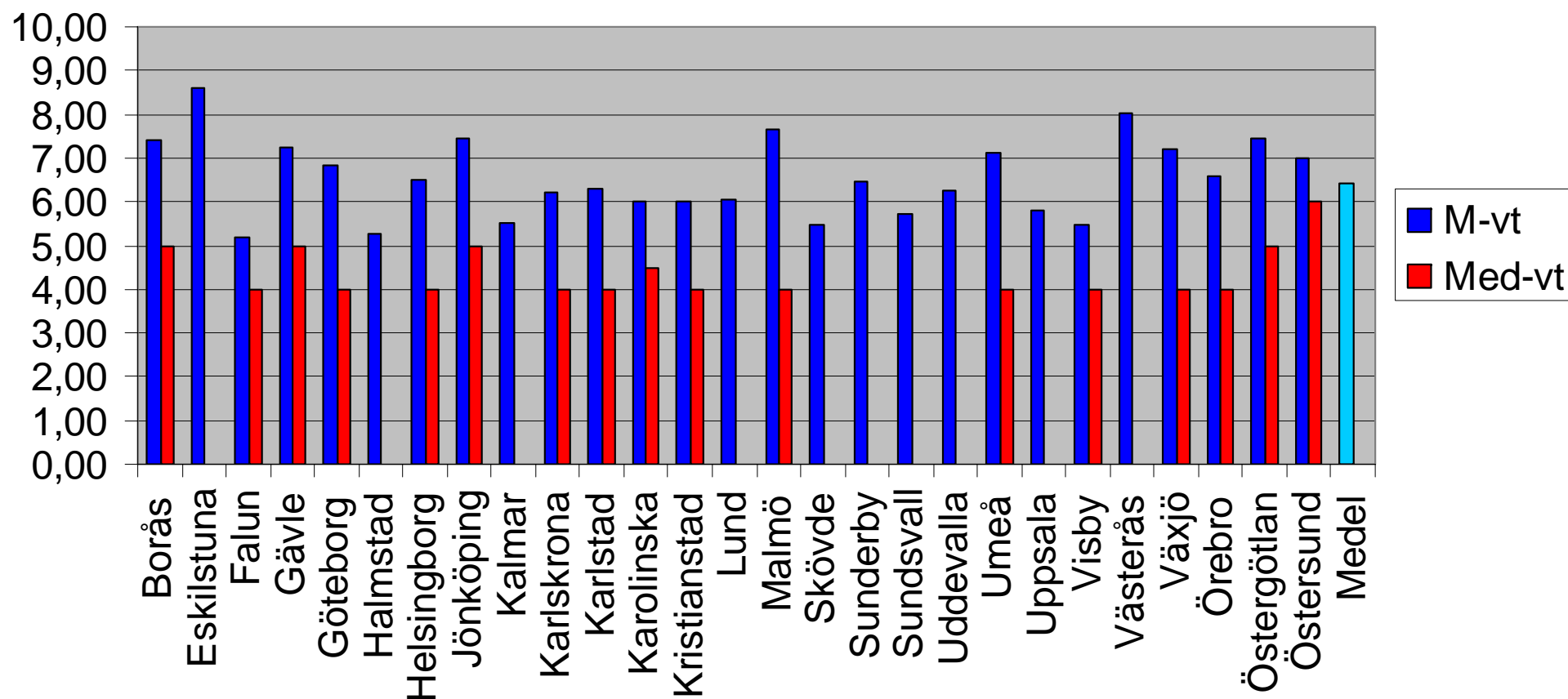
Vårdtillfällen per disponibel plats



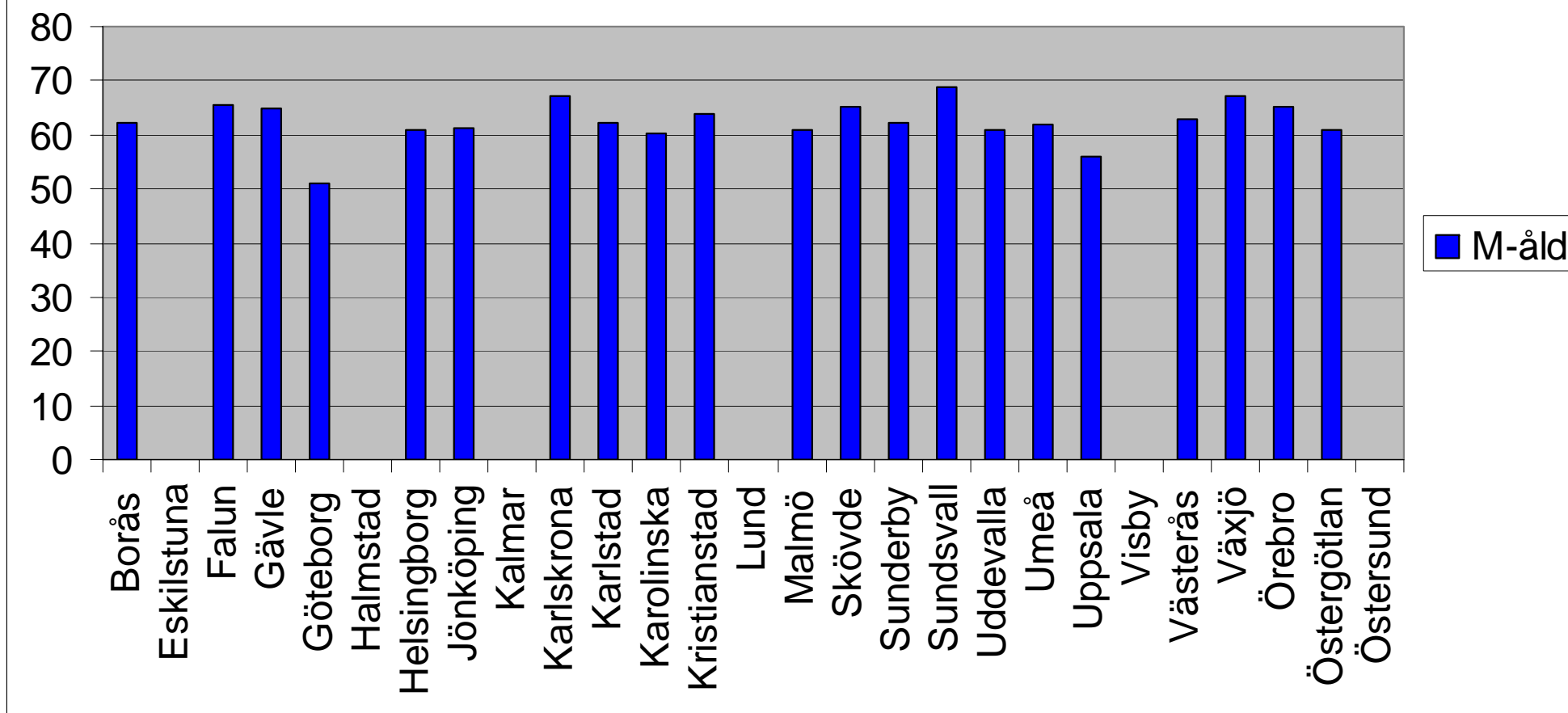
Vårddygn



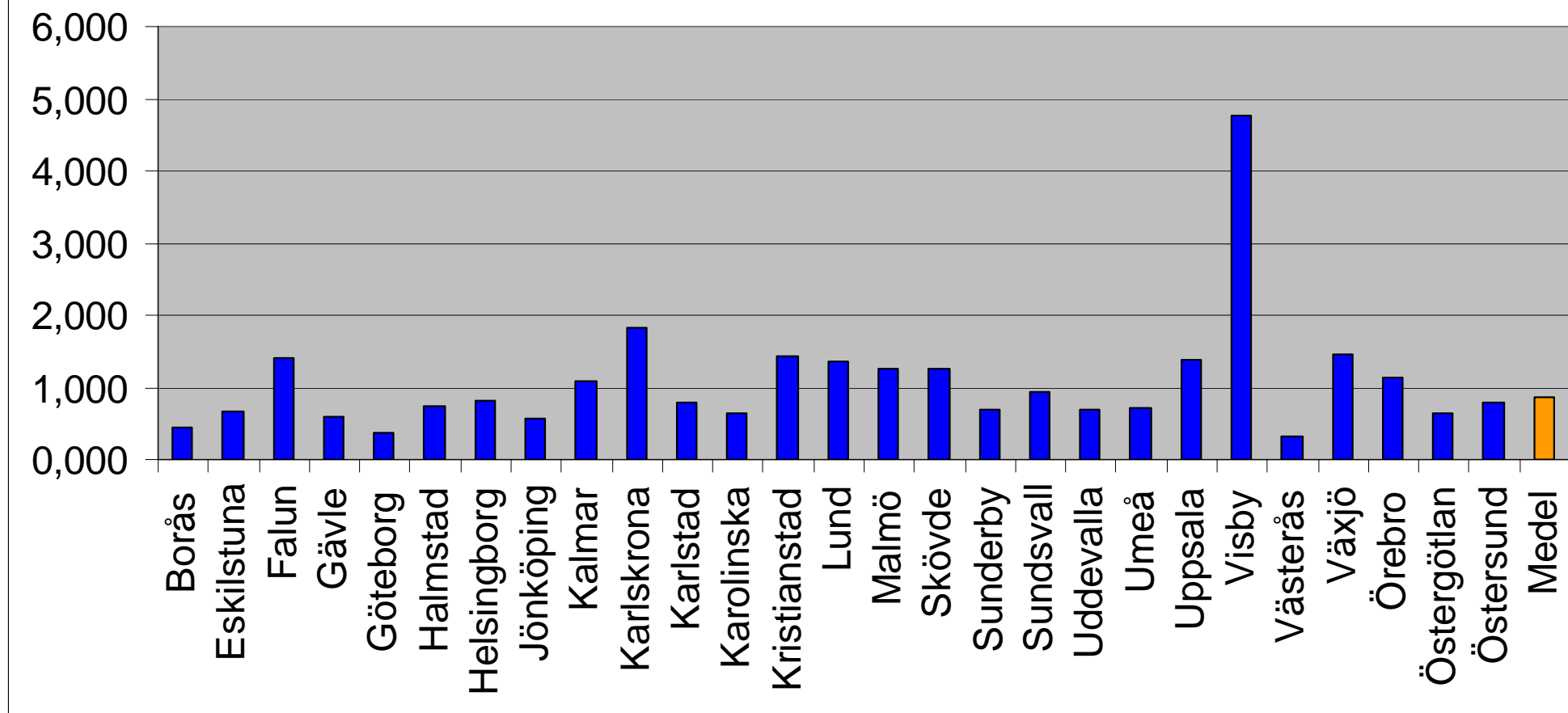
Medel- resp. medianvårdtid



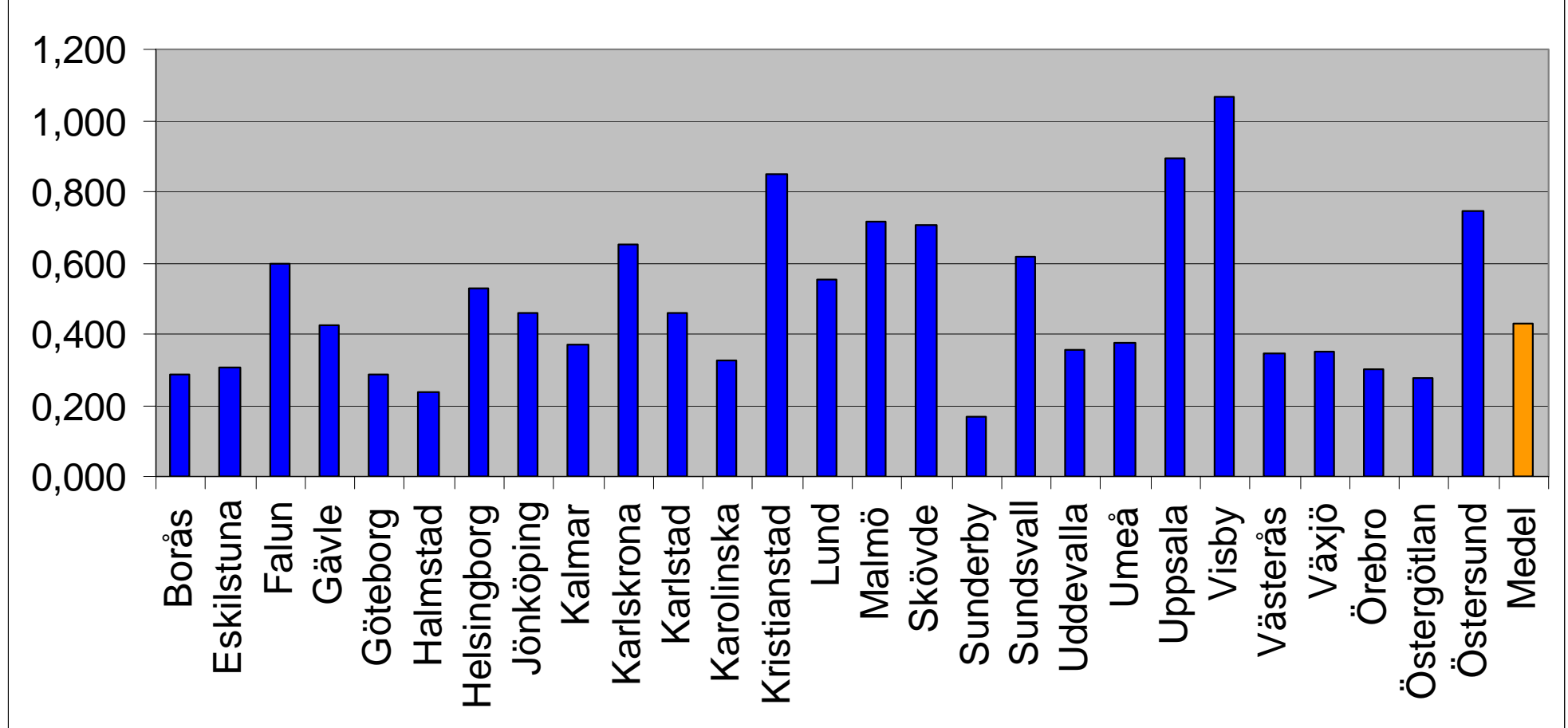
Medelålder



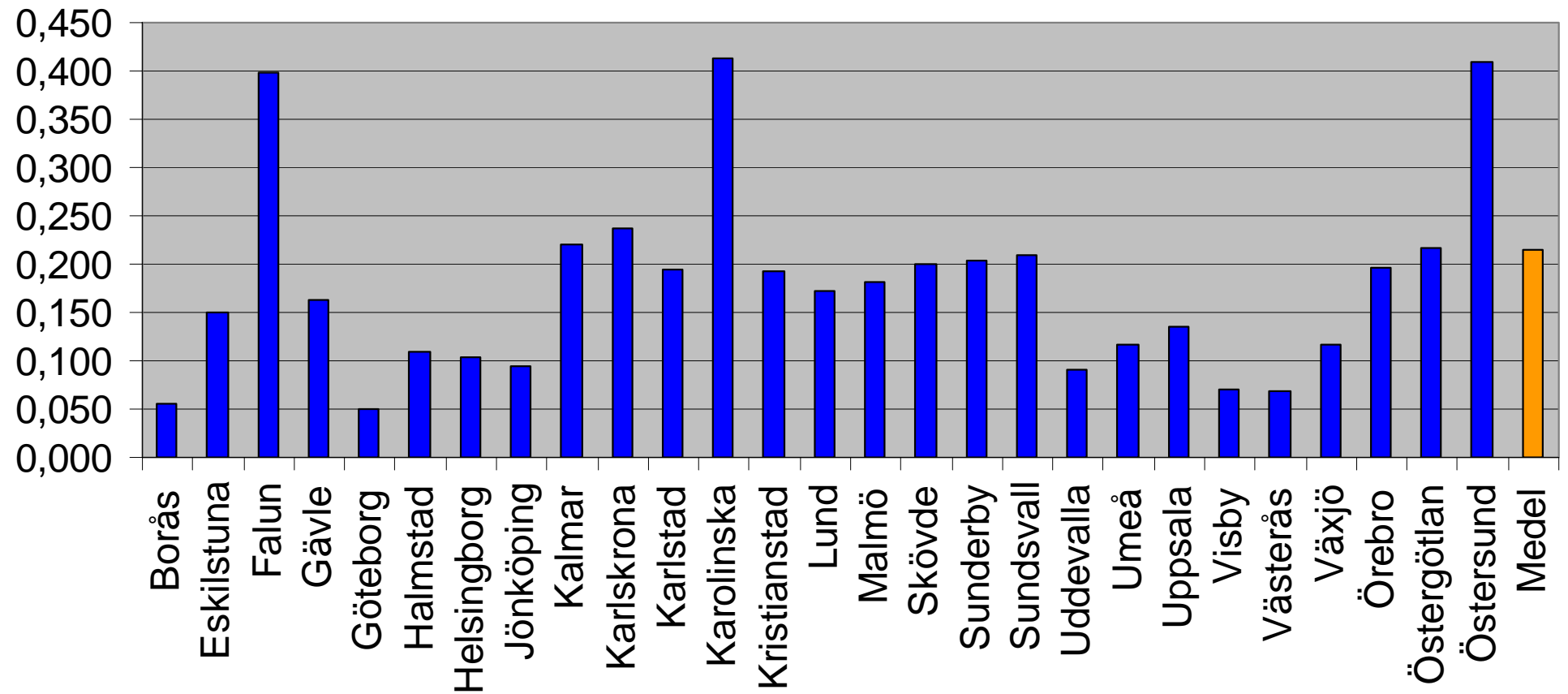
Pneumoni. Vtf/1000 inv



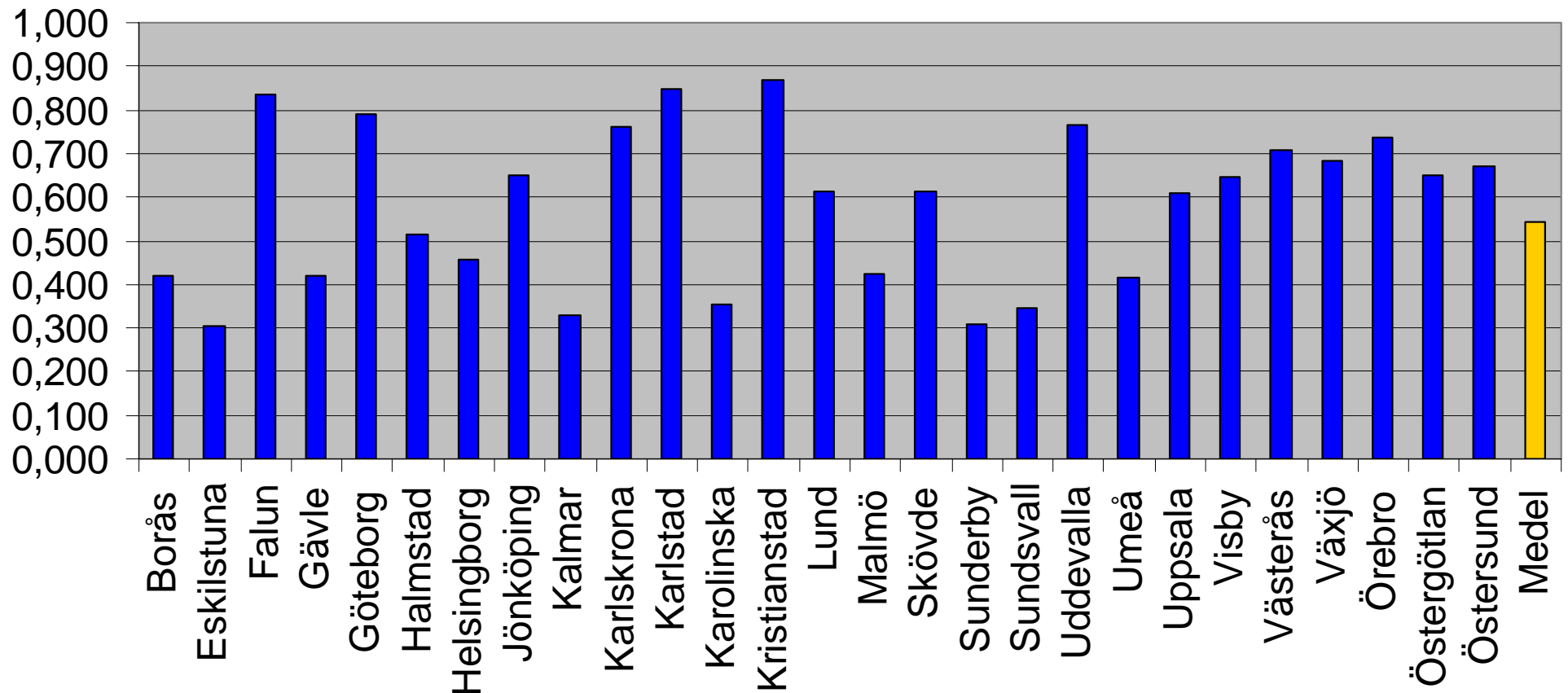
"Sepsis". Vtf/1000 inv



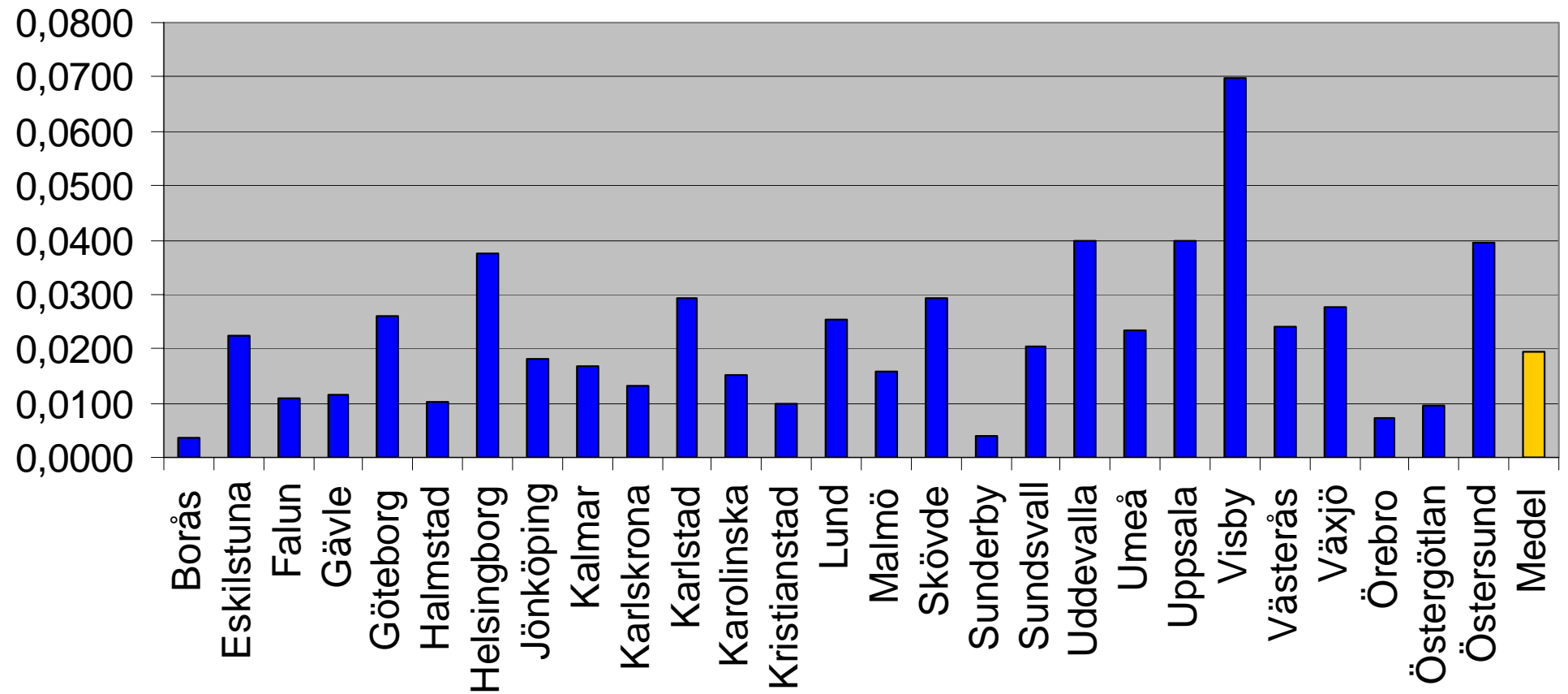
Ortopediska inf. Vtf/1000 inv



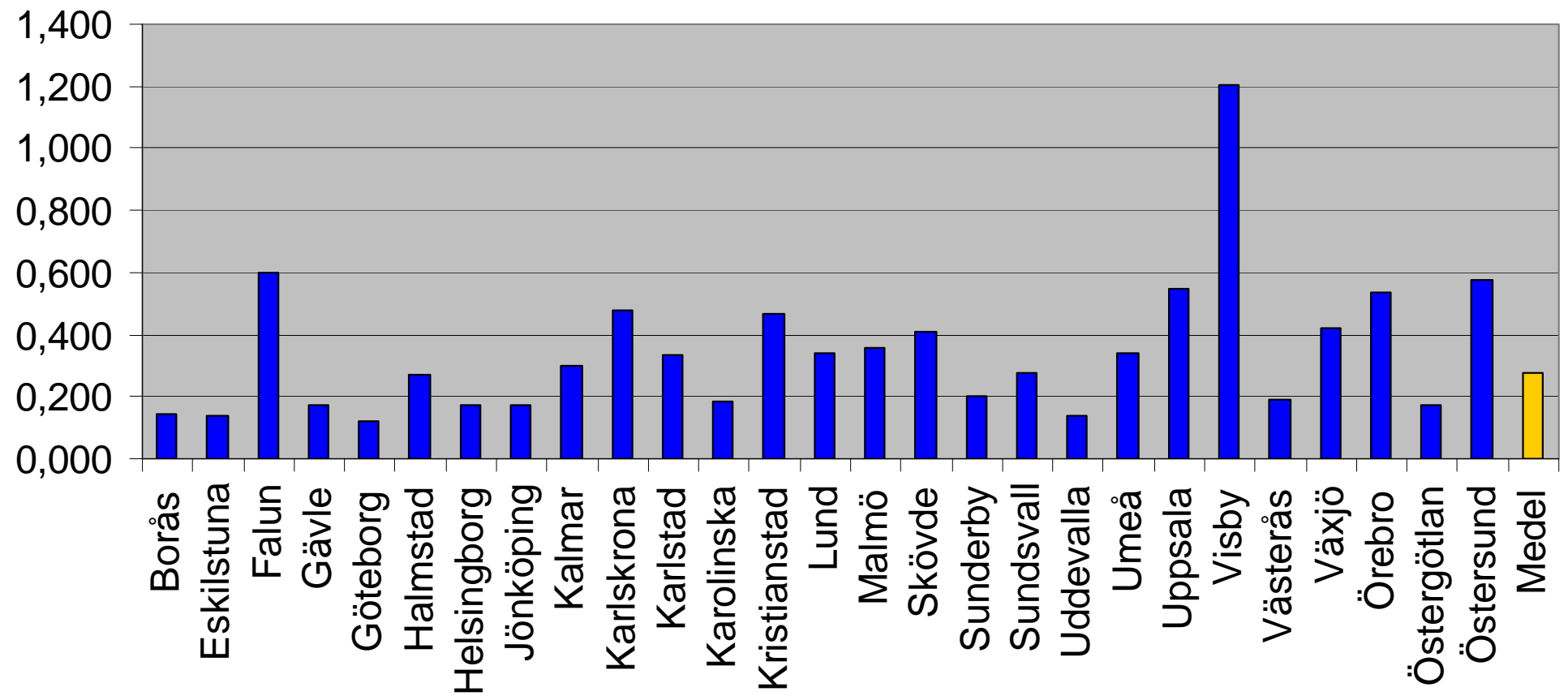
Mag-tarminf. Vtf/1000



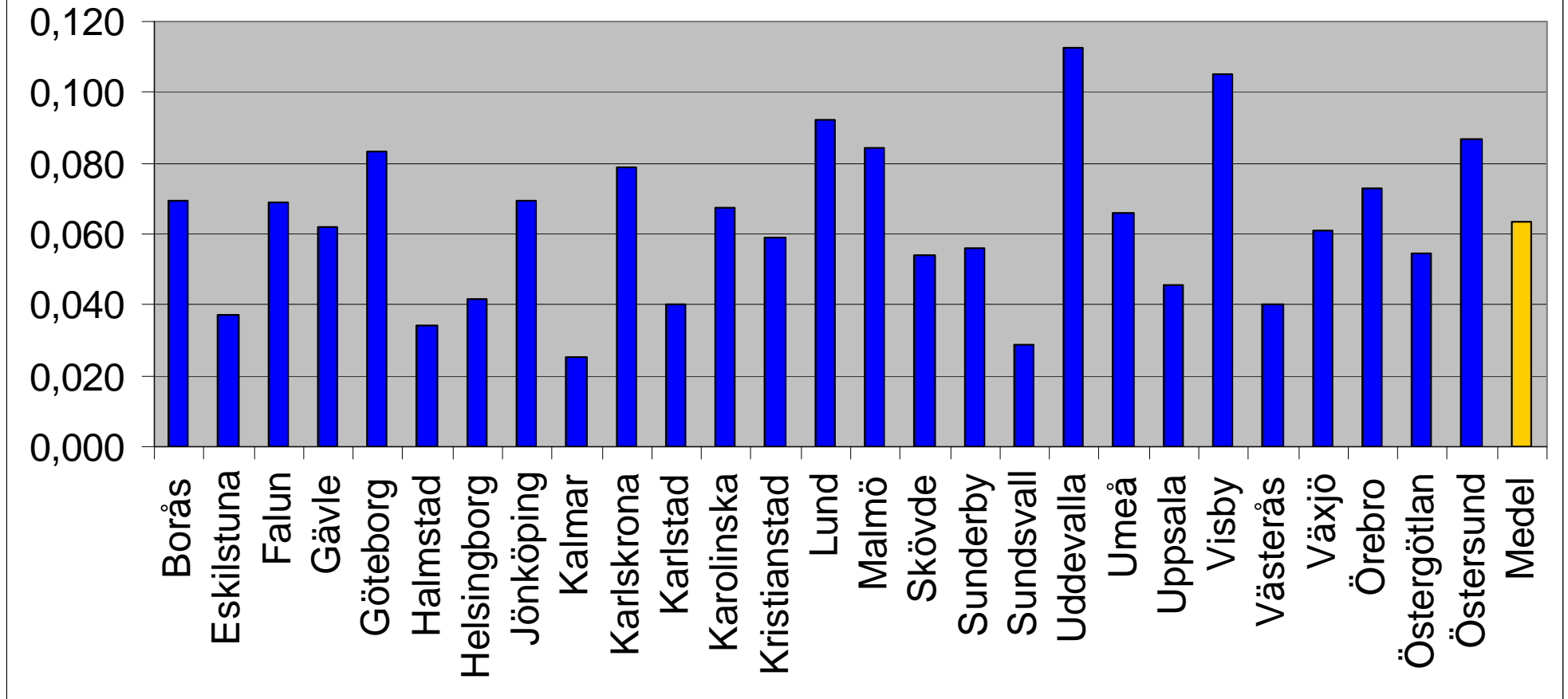
Bakteriell meningit. Vtf/1000 inv



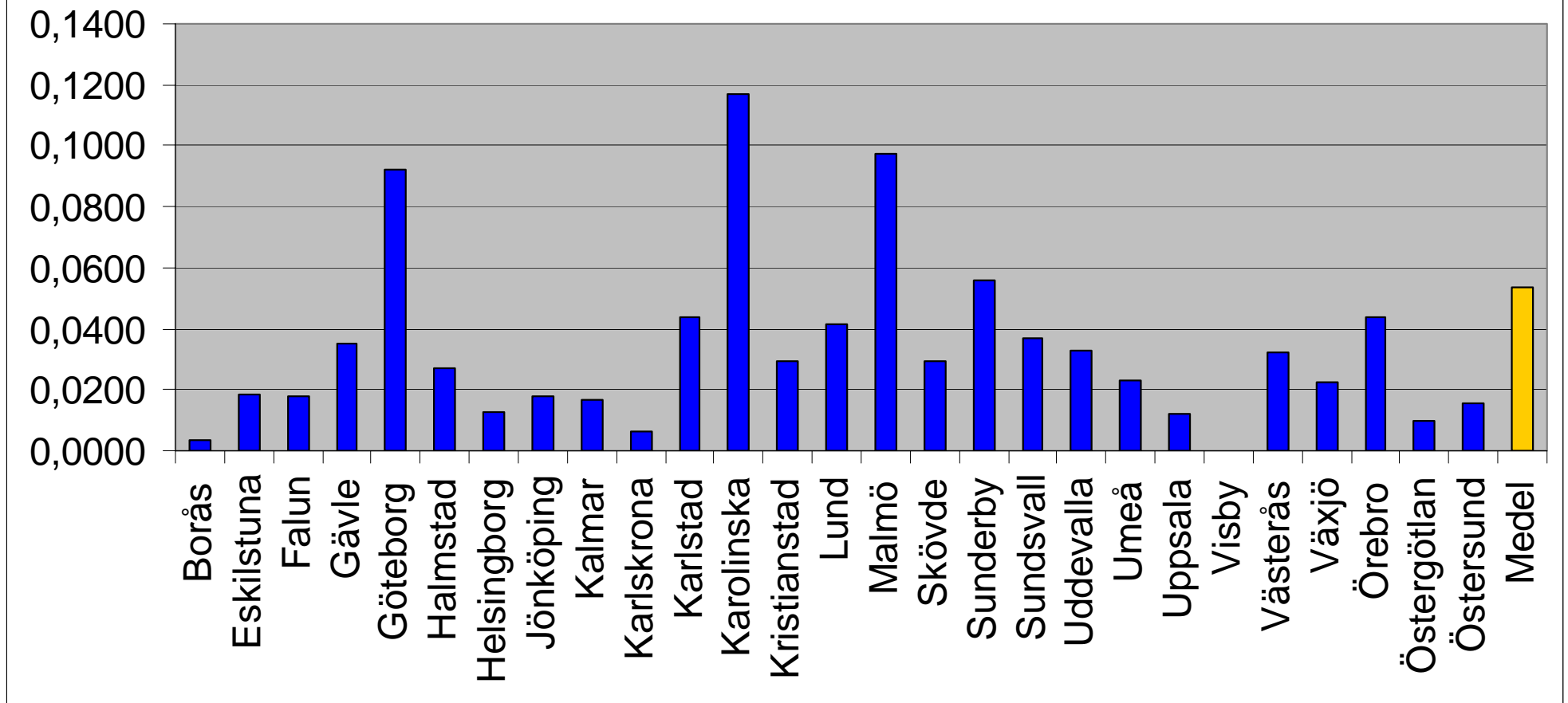
Pyelonefrit. Vtf/1000 inv



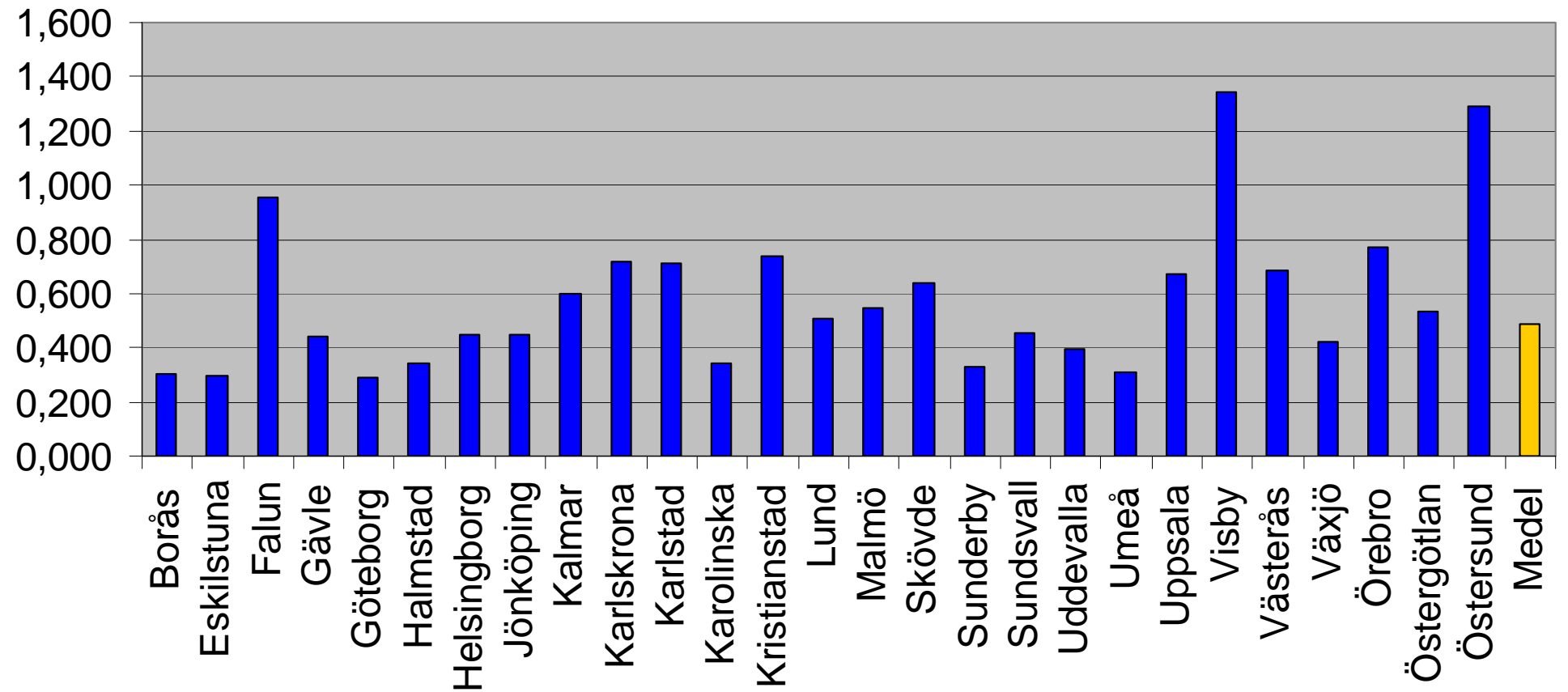
Endokardit. Vtf/1000 inv



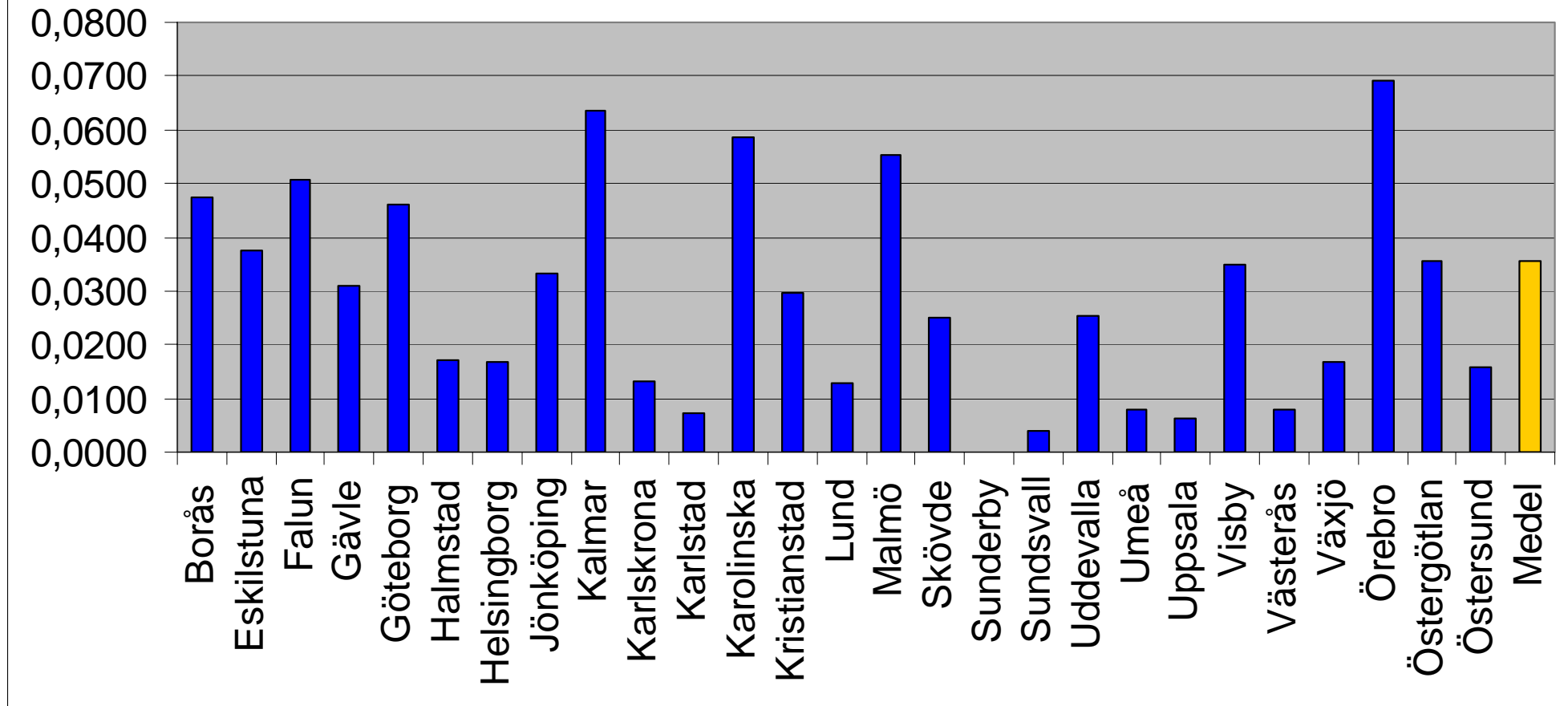
HIV-inf. Vtf/1000 inv



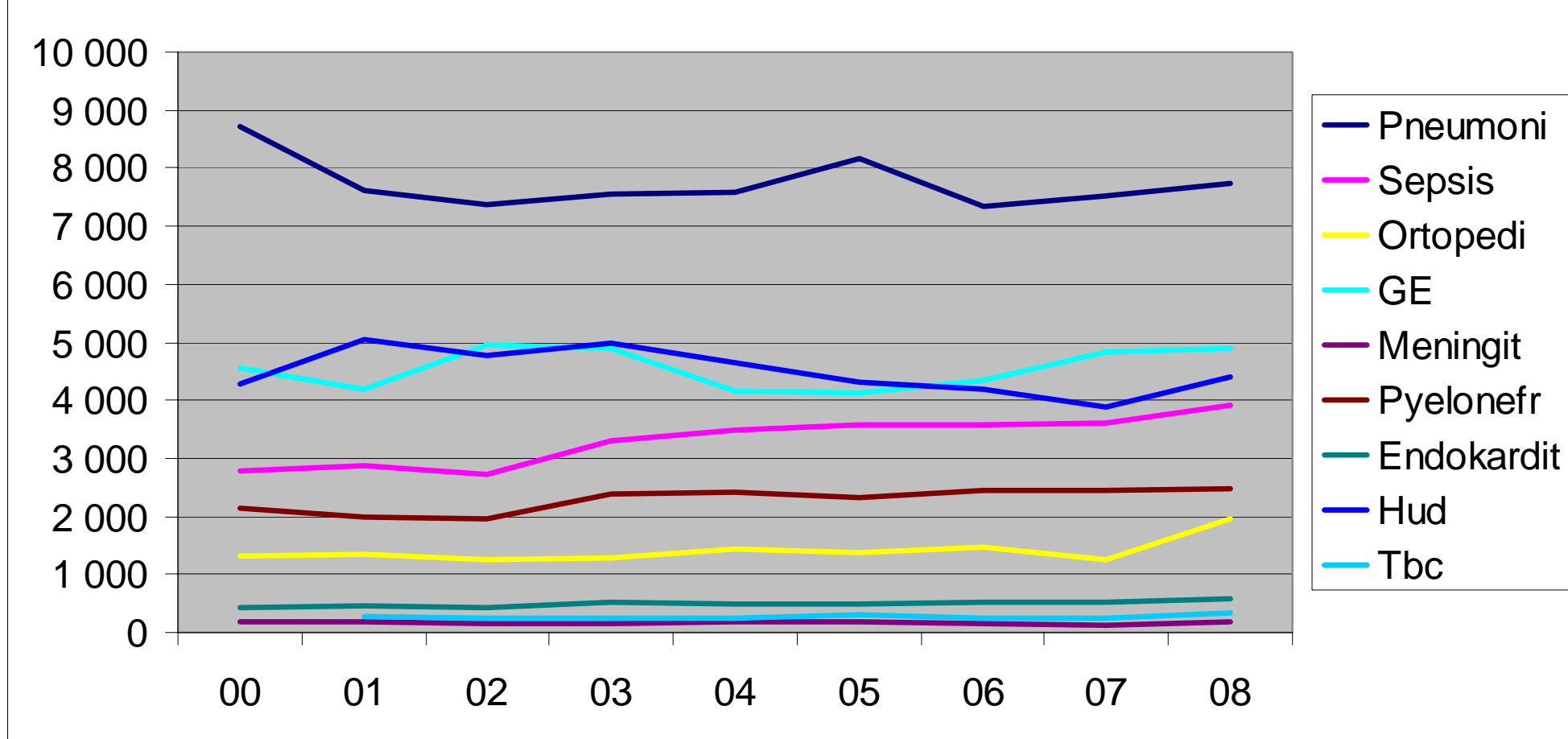
Hud- och mjukdelsinf. Vtf/1000 inv



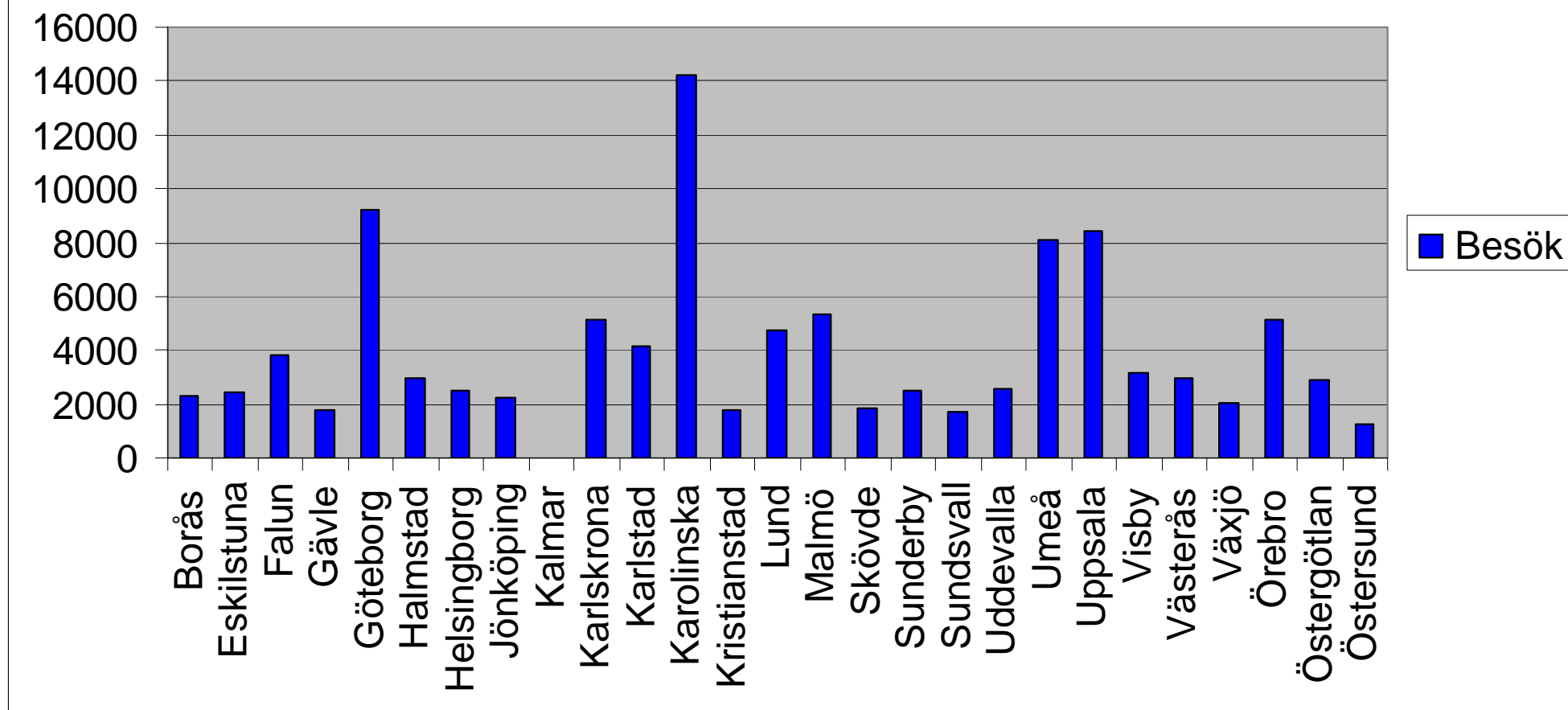
Tuberkulos. Vtf/1000 inv



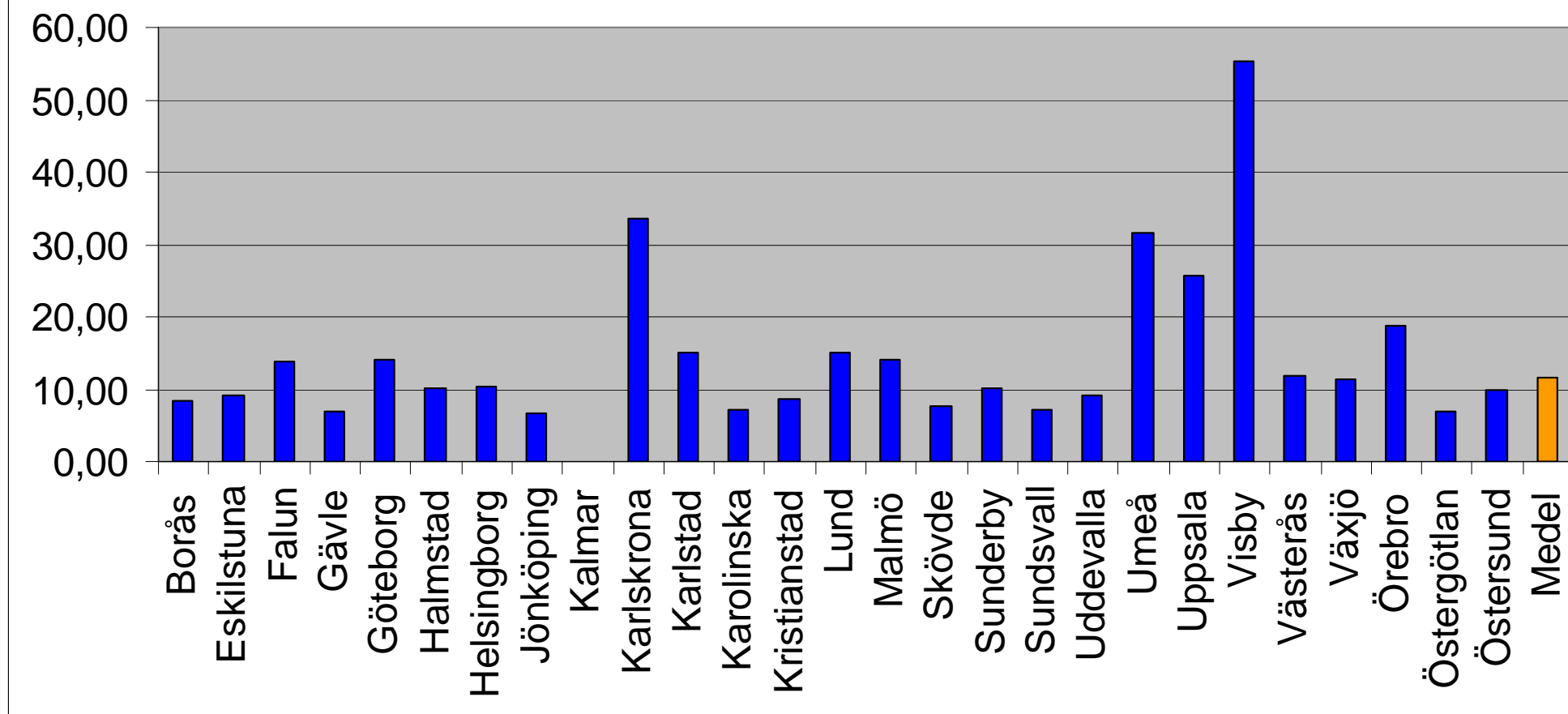
Vårdtillfällen totalt



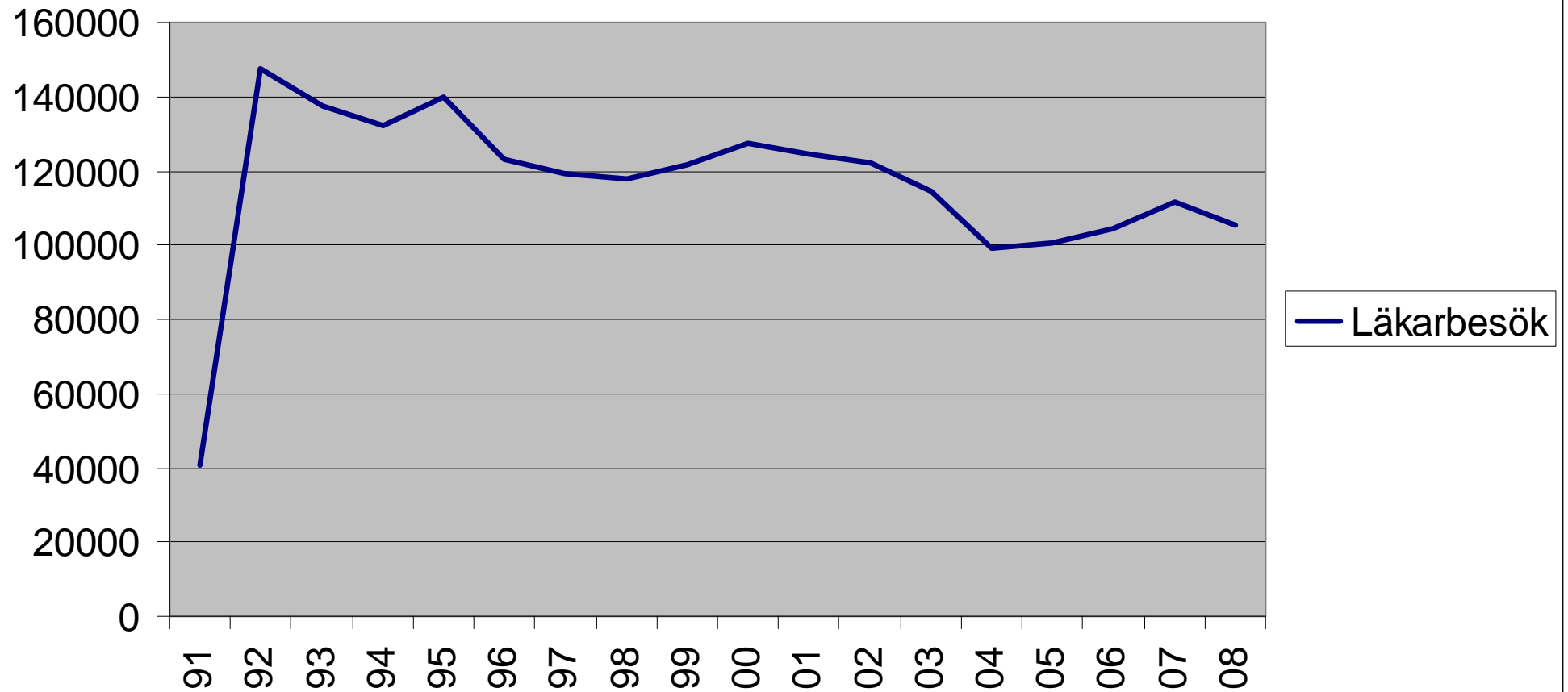
Läkarbesök, ej vaccination



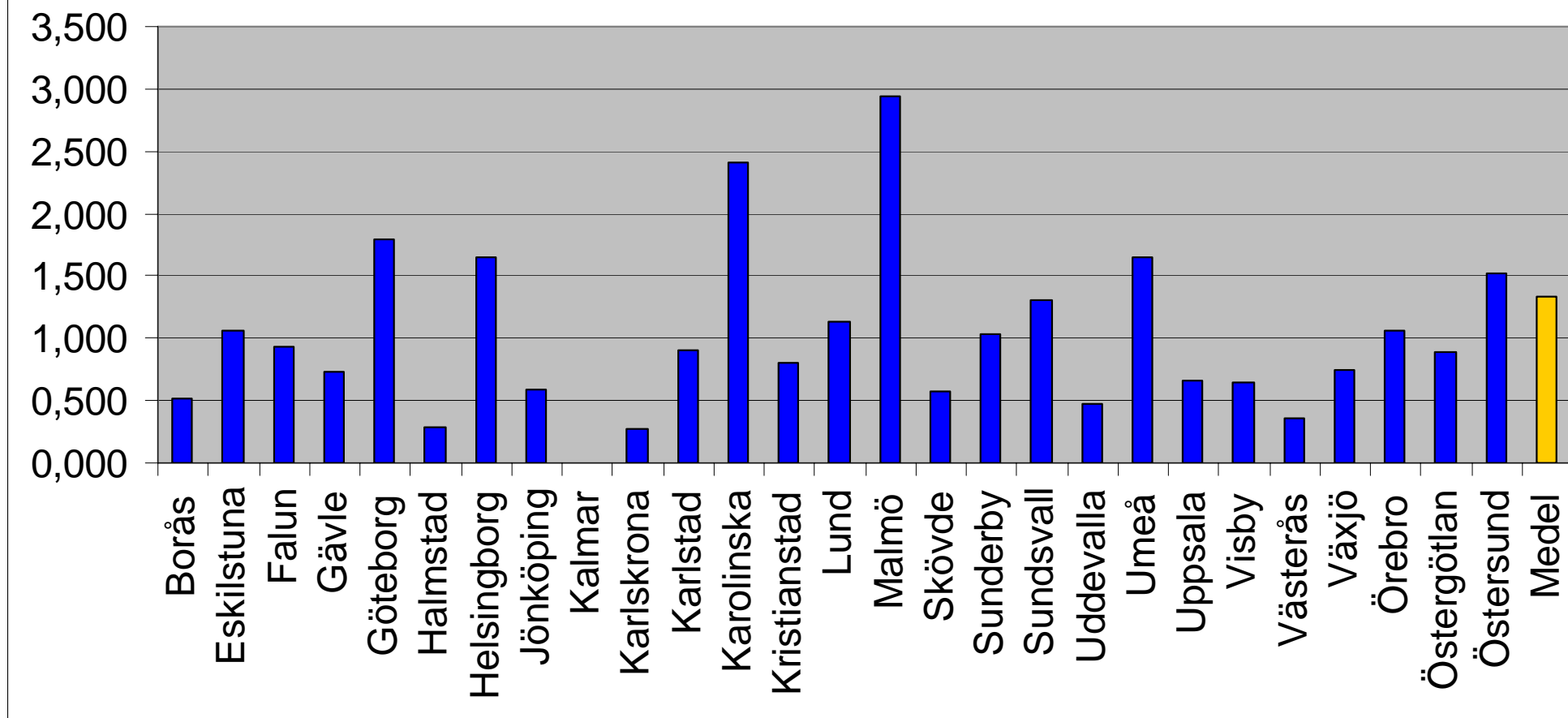
Läkarebesök, ej vacc, per 1000 inv



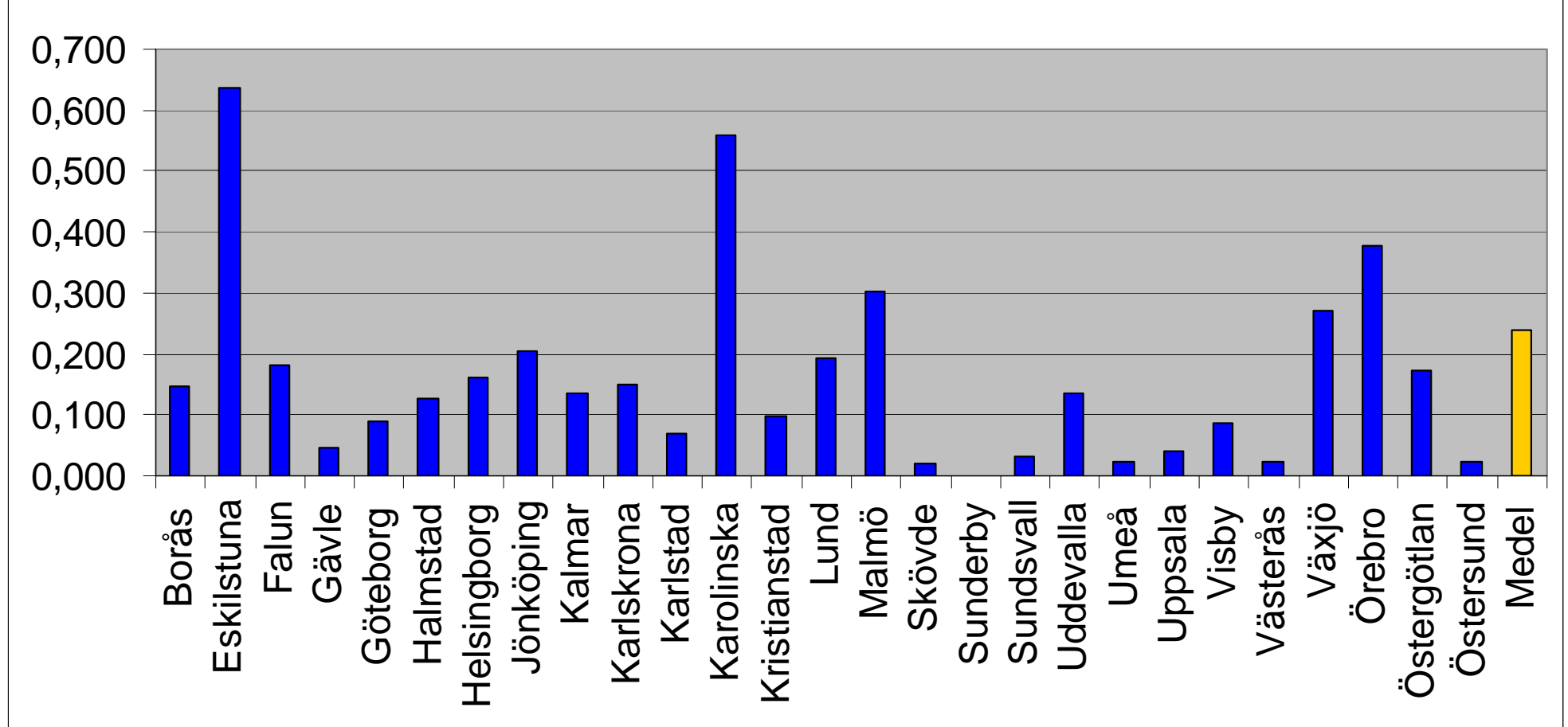
Läkarbesök, ej vaccination, totalt



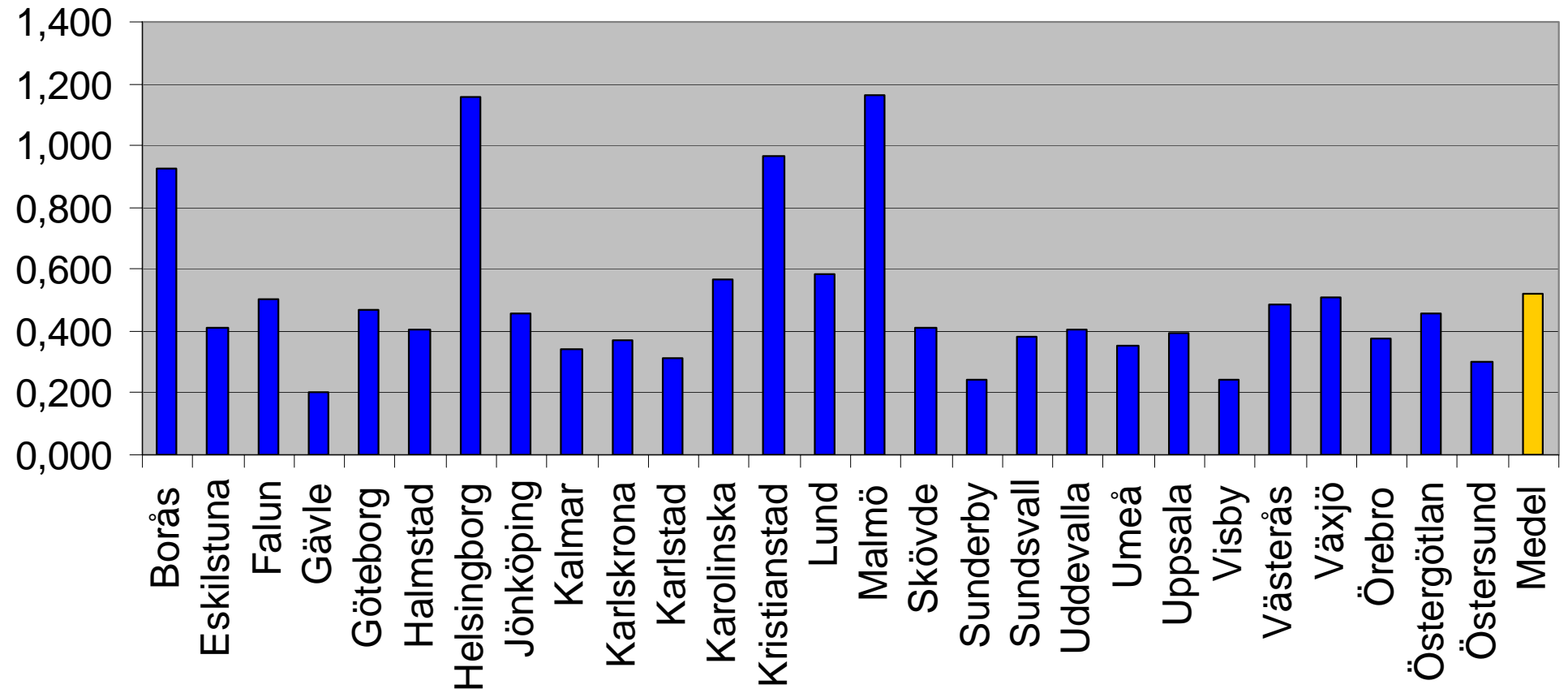
HIV-besök/1000 inv



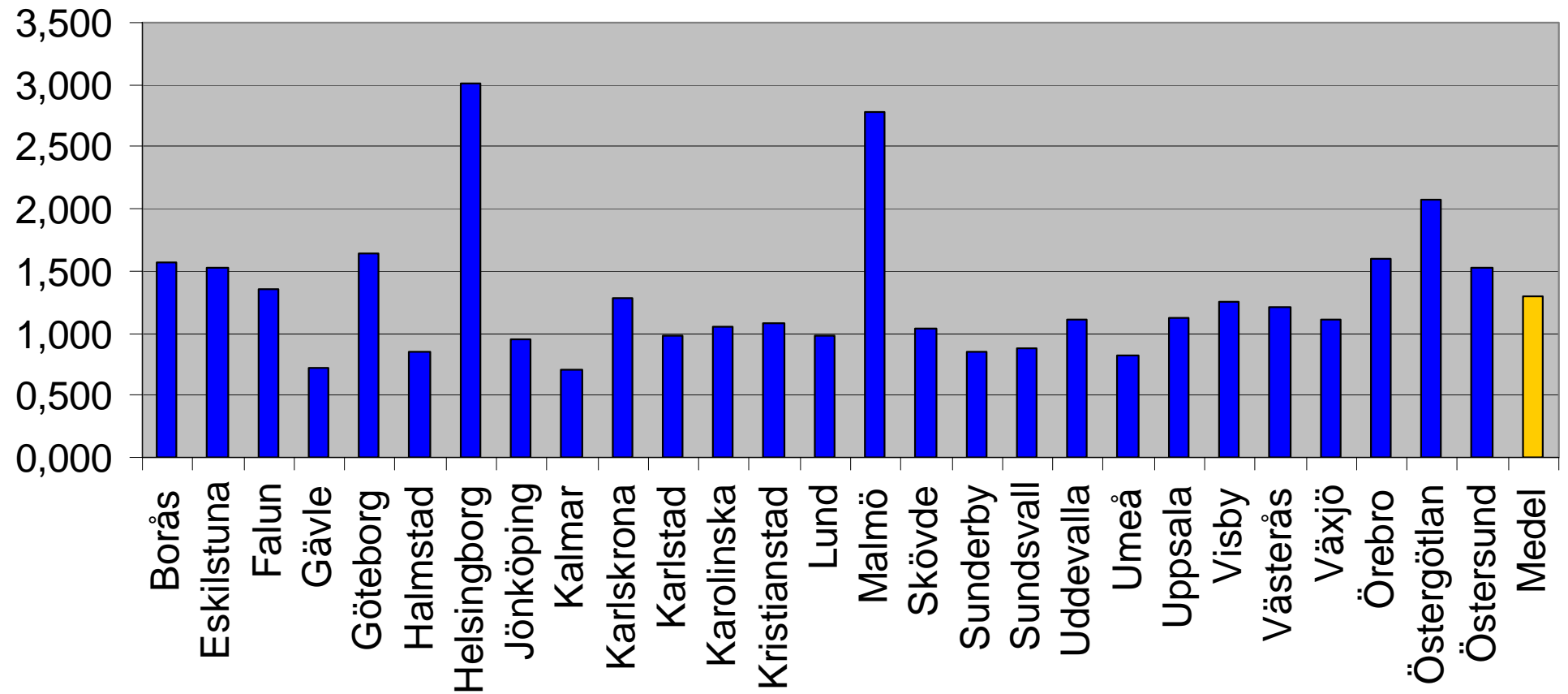
Tbc-besök/1000 inv



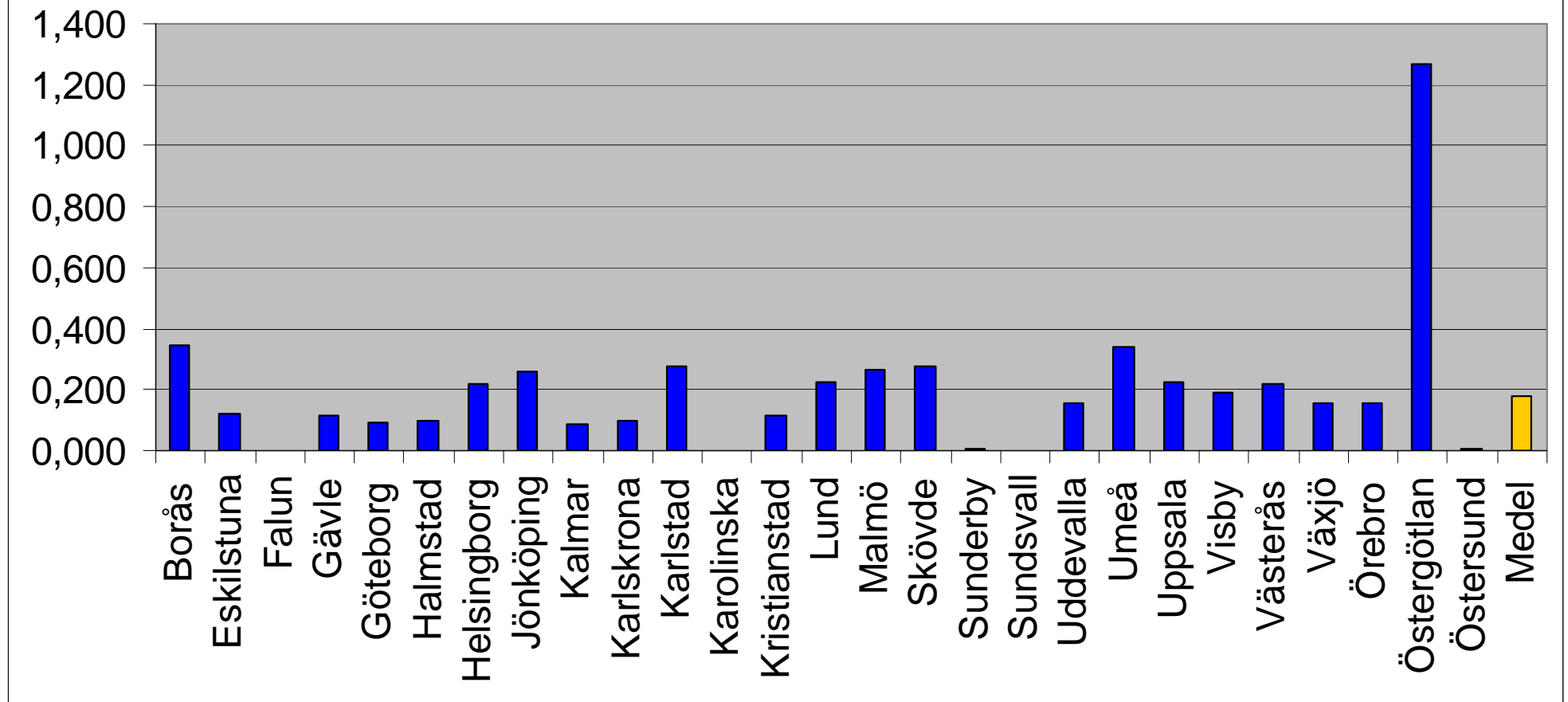
Hepatit B-besök/1000 inv



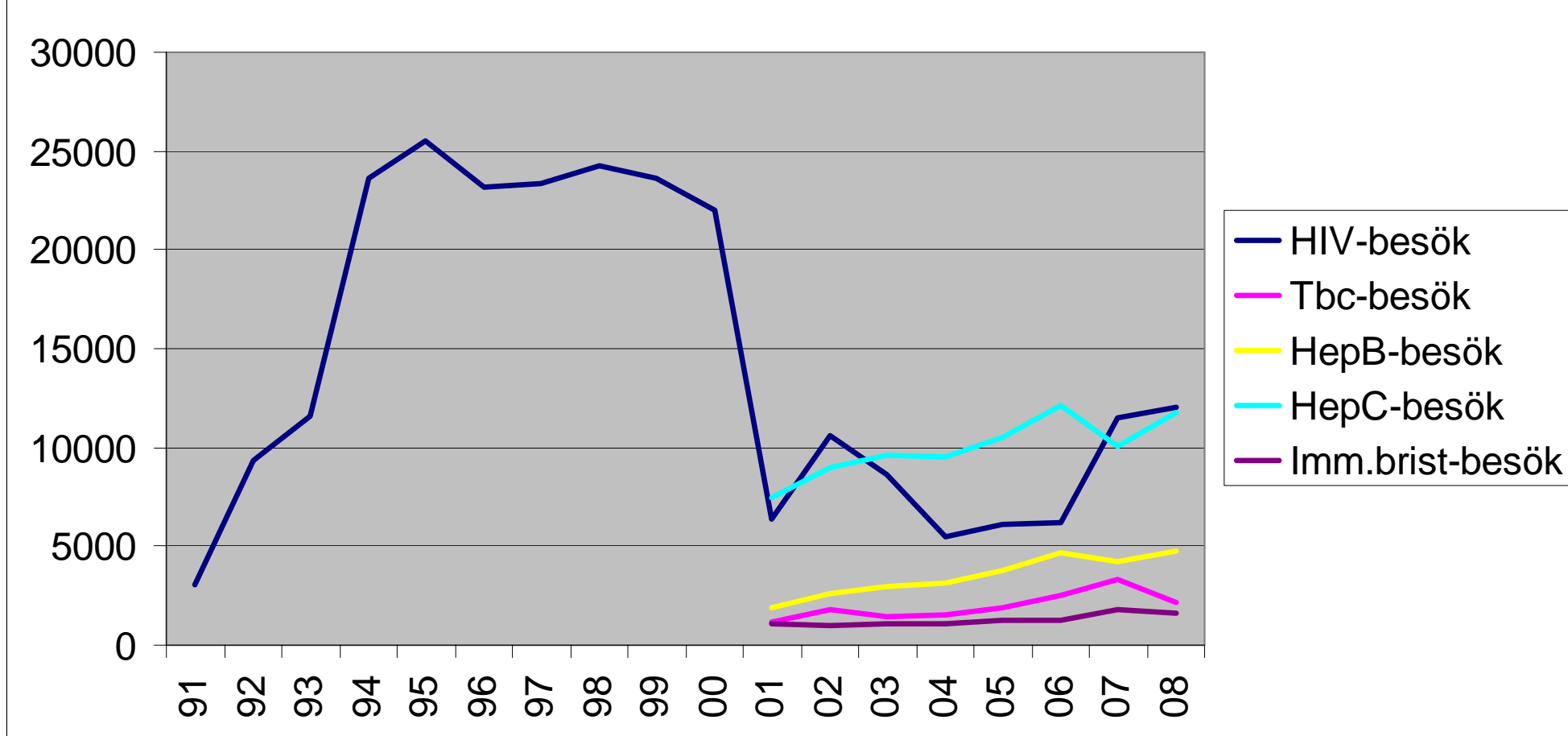
Hepatit C-besök/1000 inv



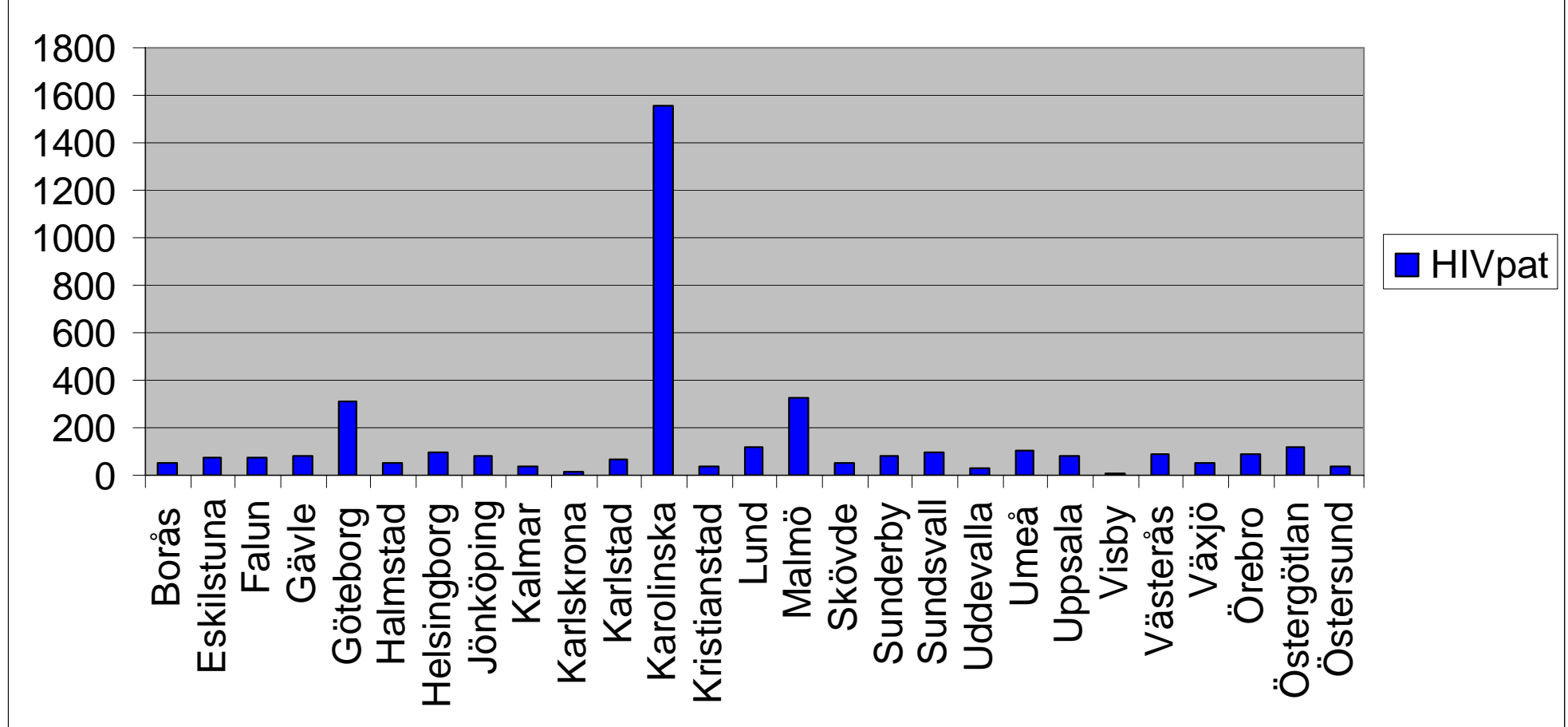
Immunbristbesök/1000 inv



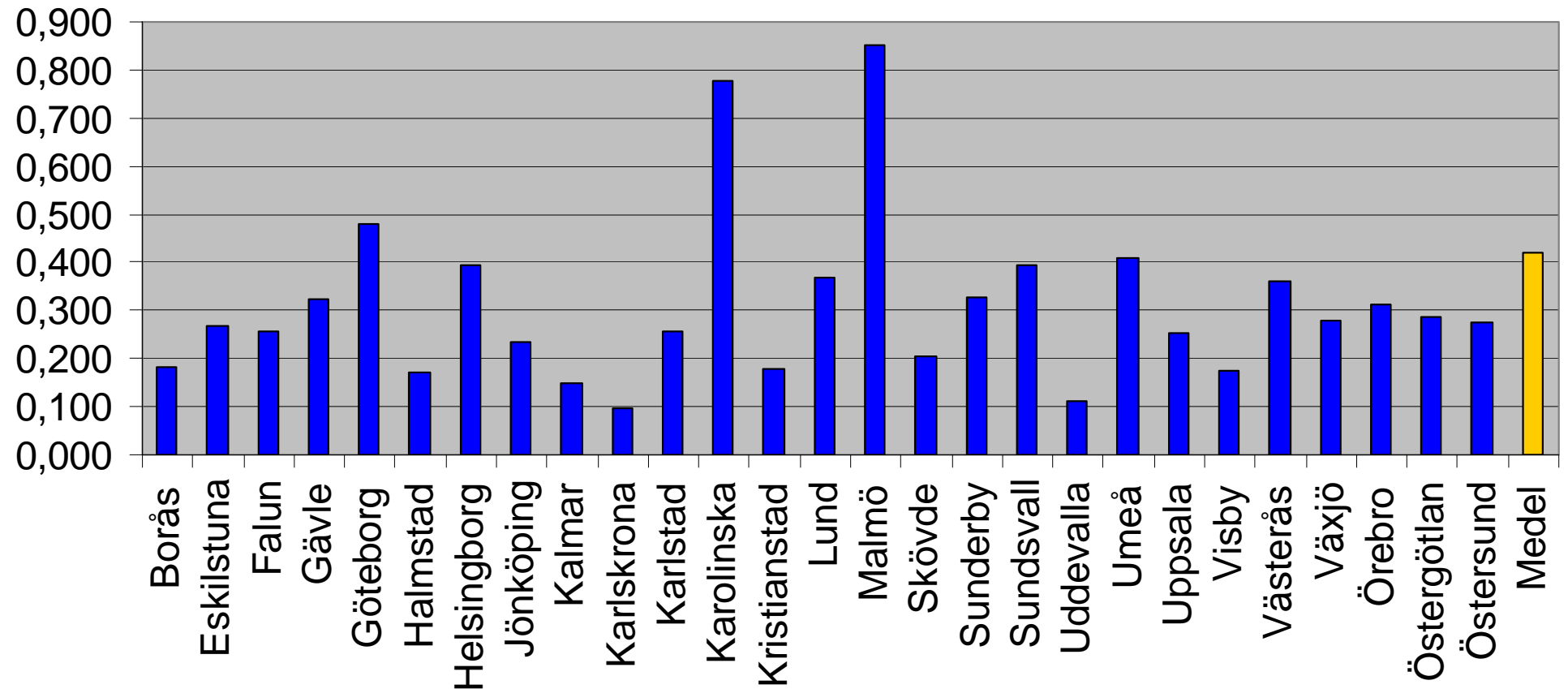
Totalt antal läkarbesök



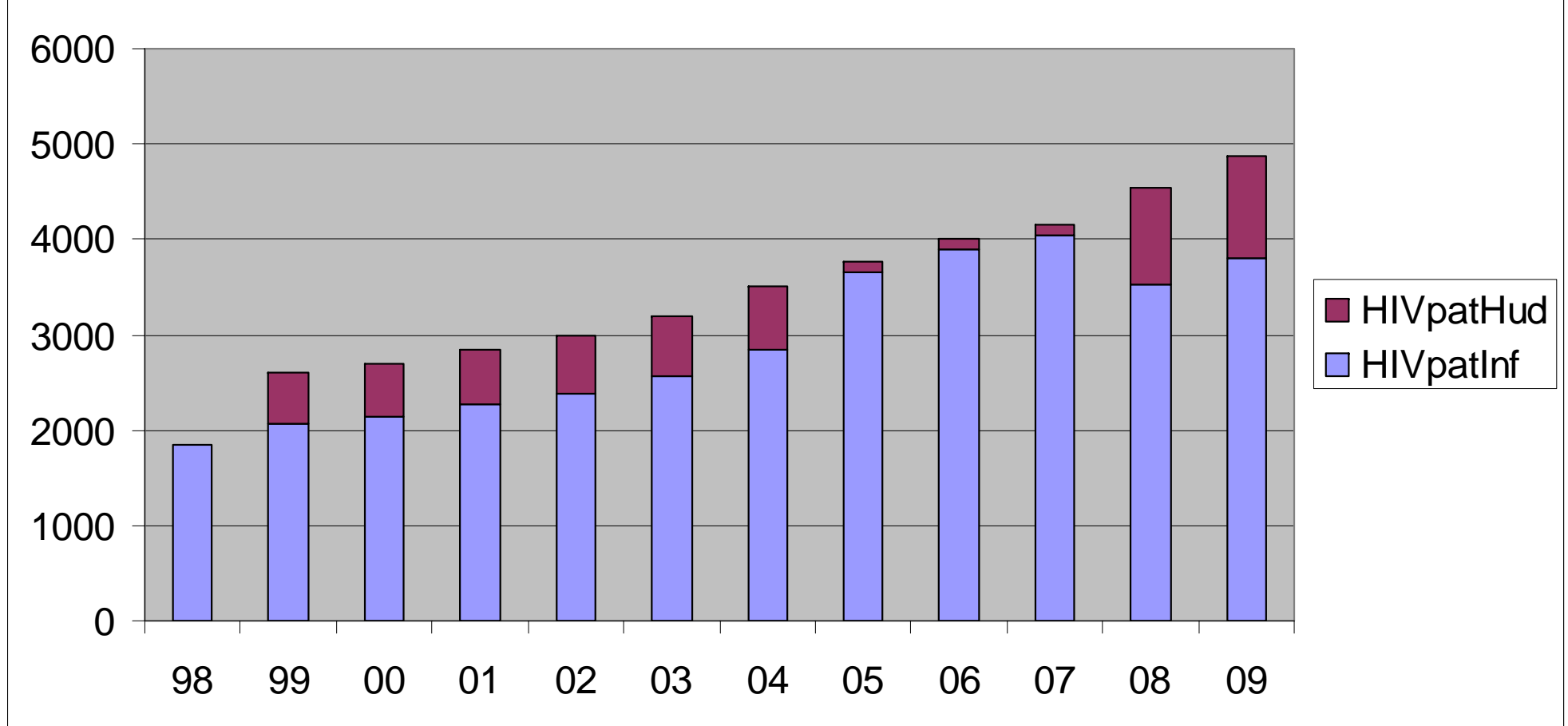
HIV-pat aktuella vid kliniken



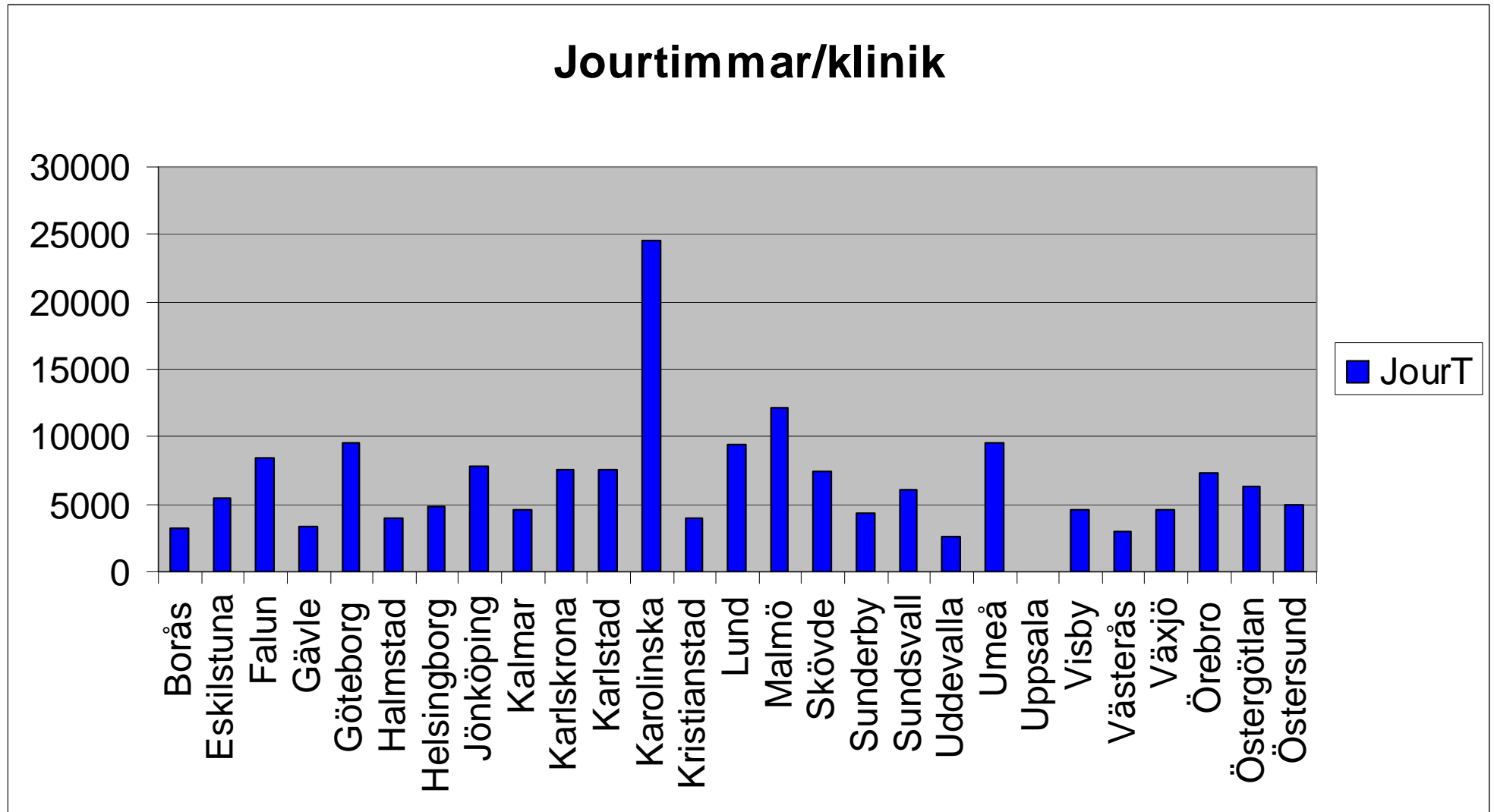
HIV-patienter per 1000 inv

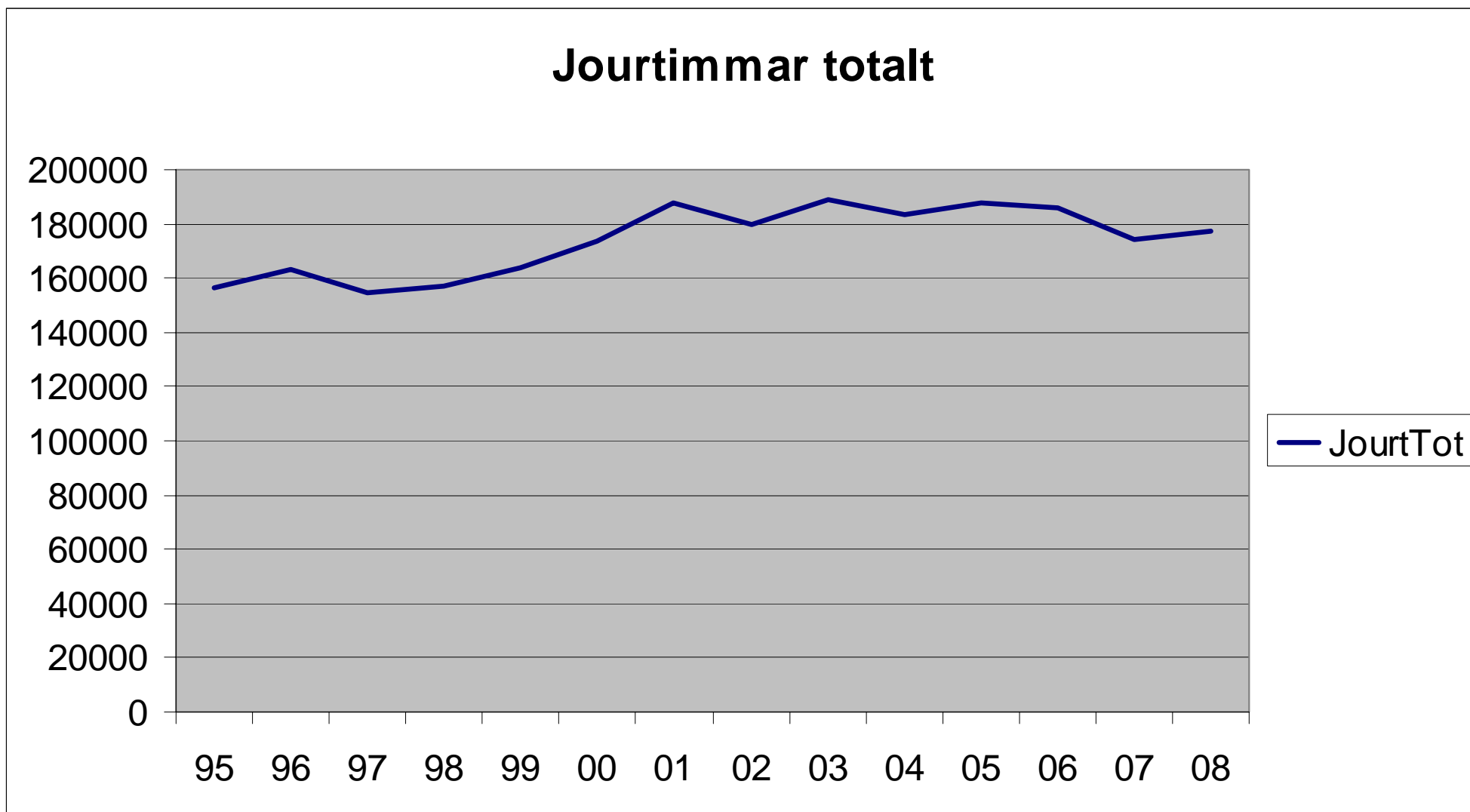


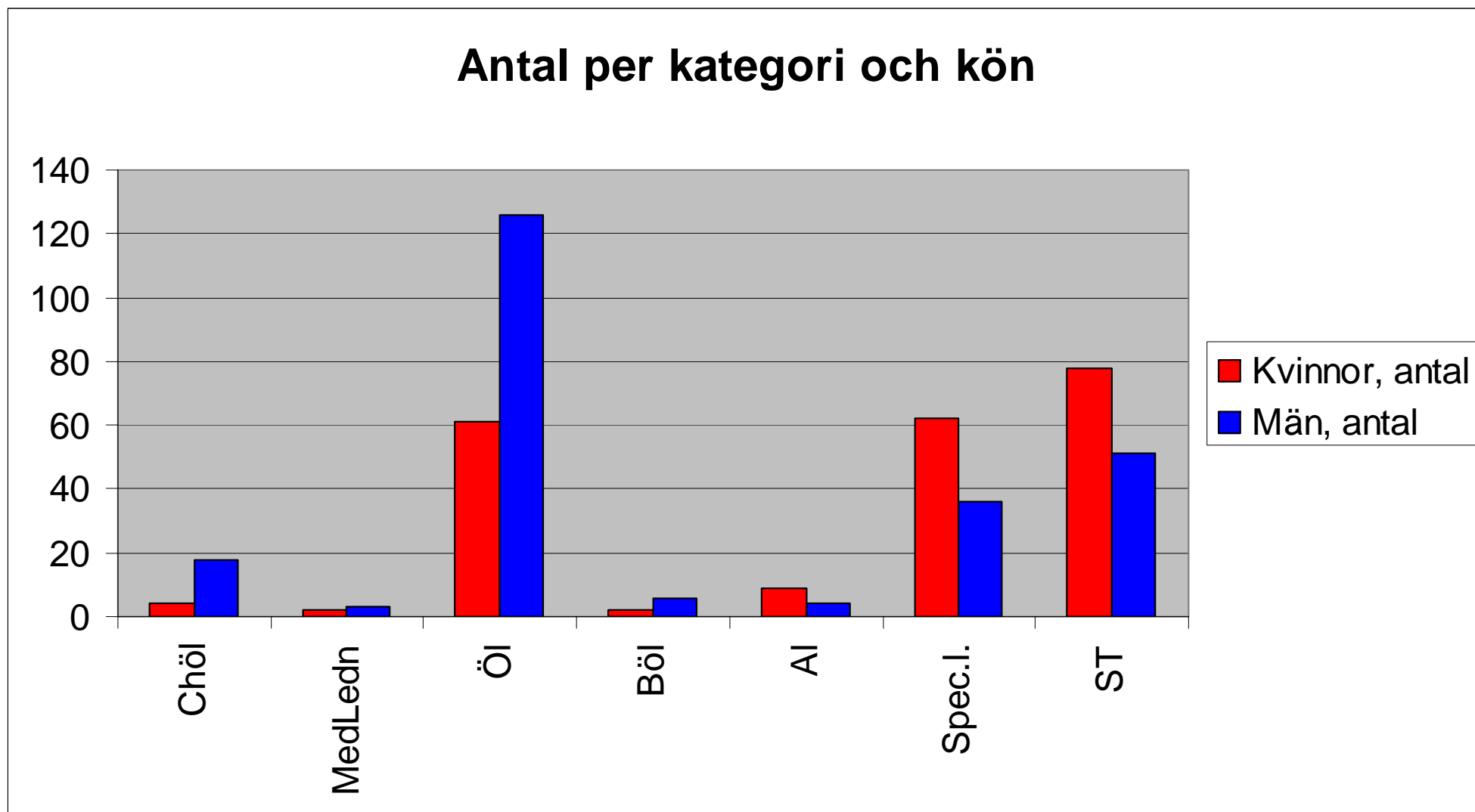
HIV-patienter totalt



Jourtimmar/klinik







Medellön per kategori och kön

