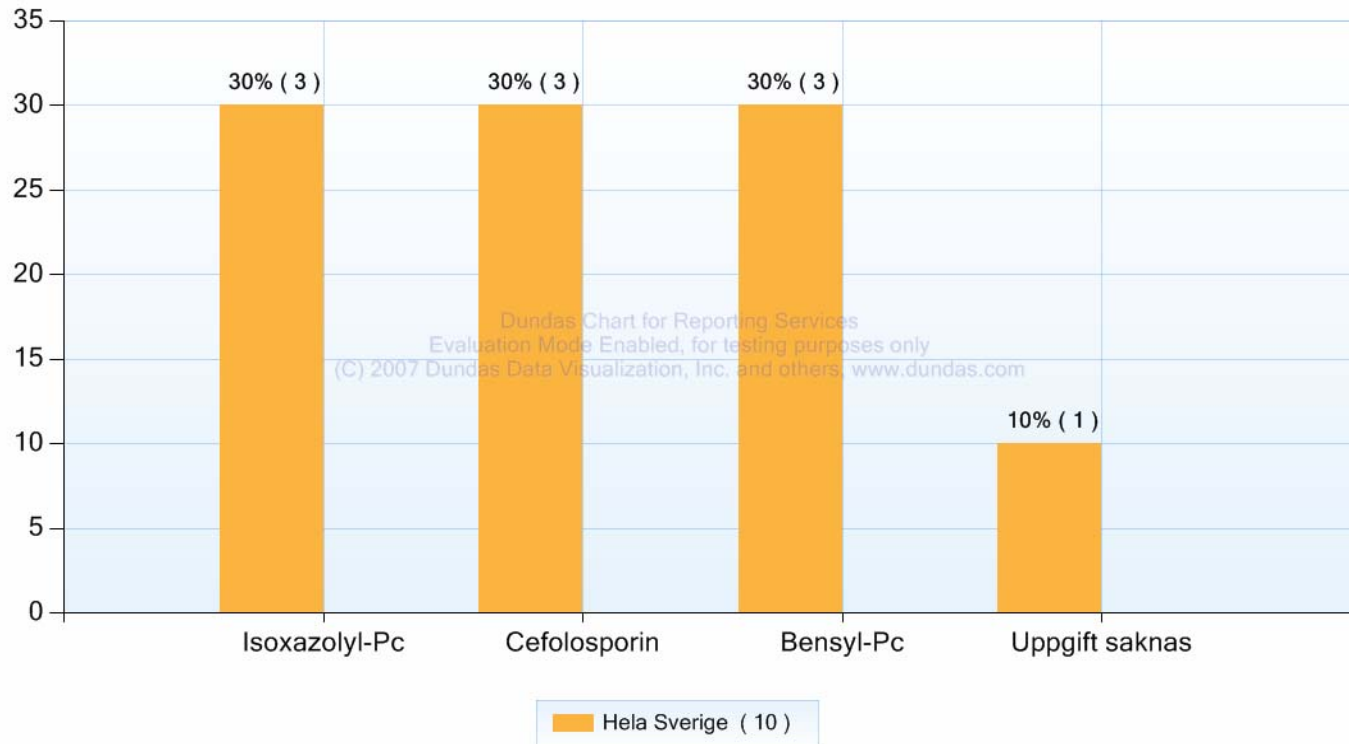
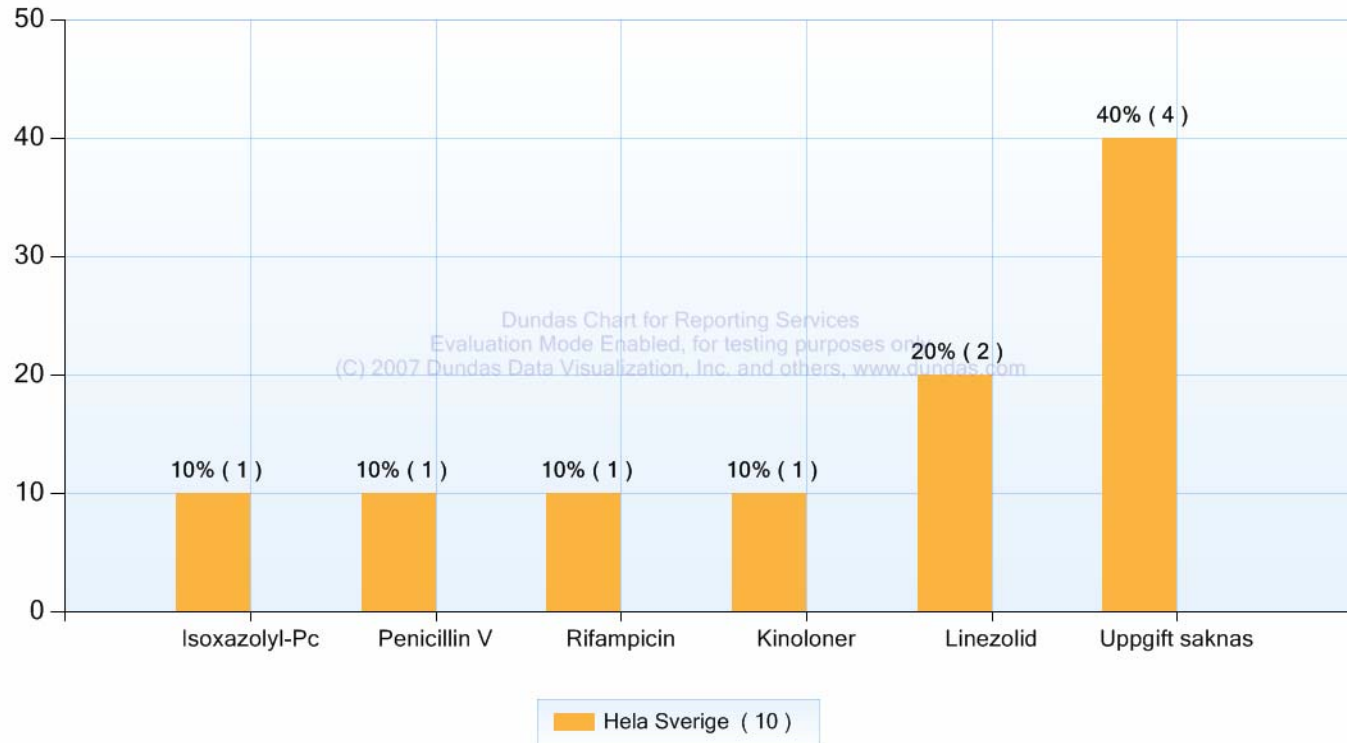


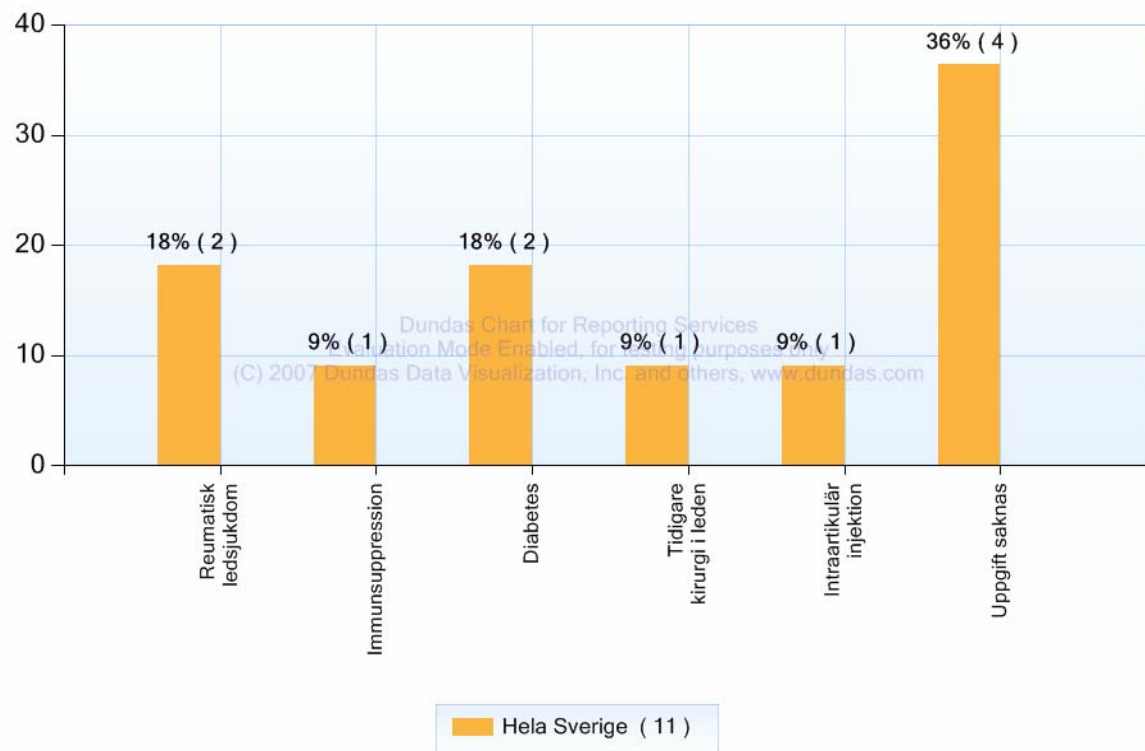
### Antibiotika 1 IV



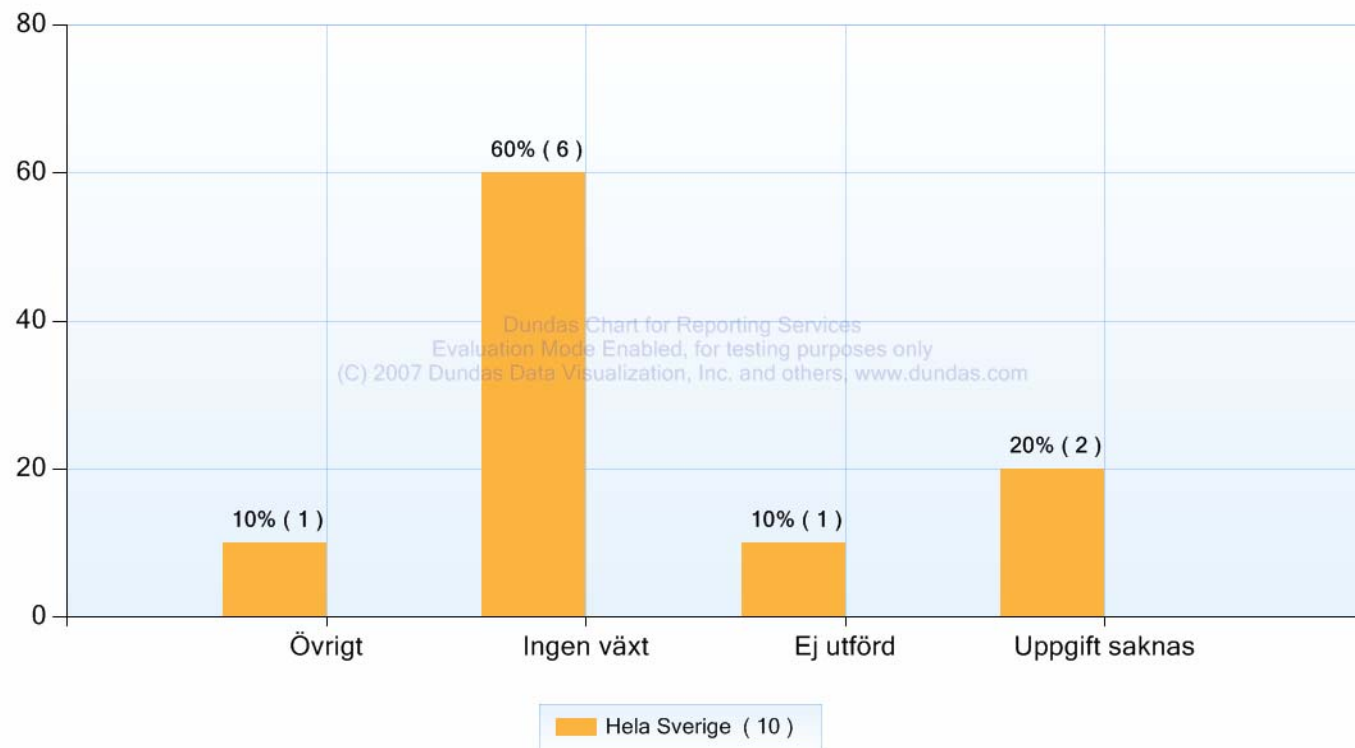
### Antibiotika 1 PO



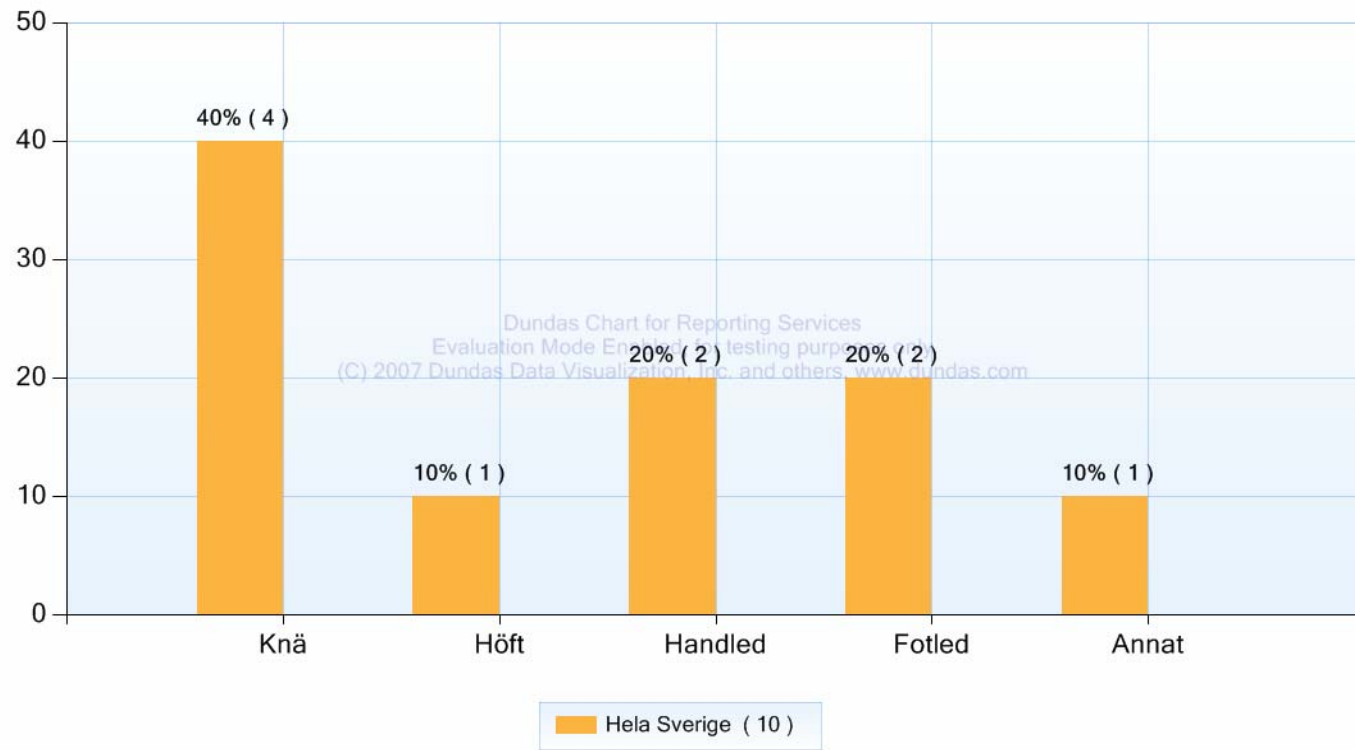
## Bidragande sjukdom



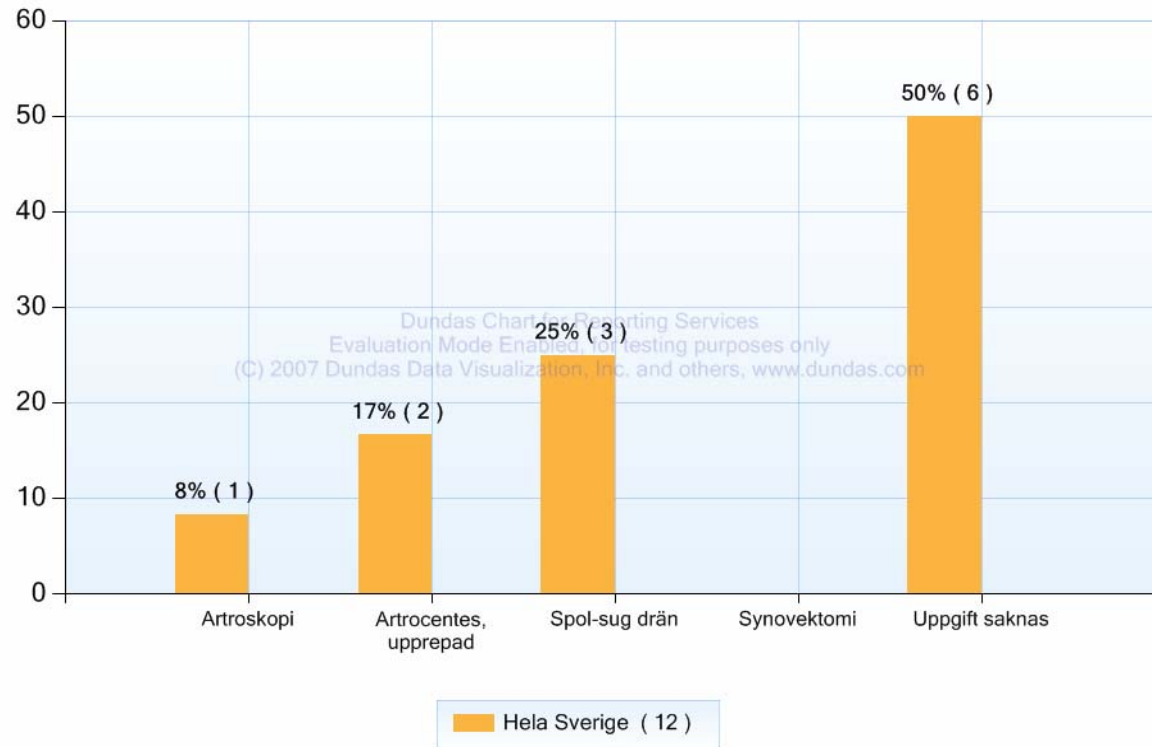
## Blododling



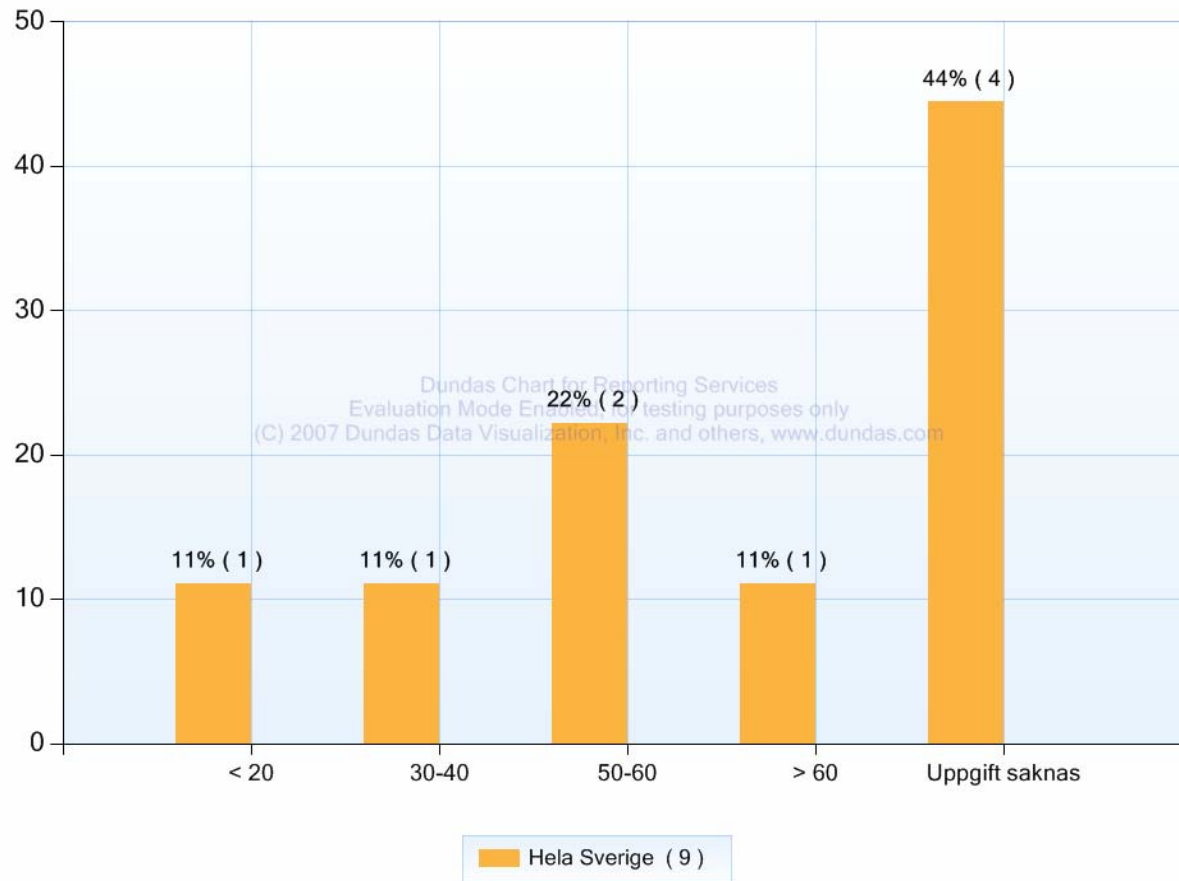
### Infekterad led



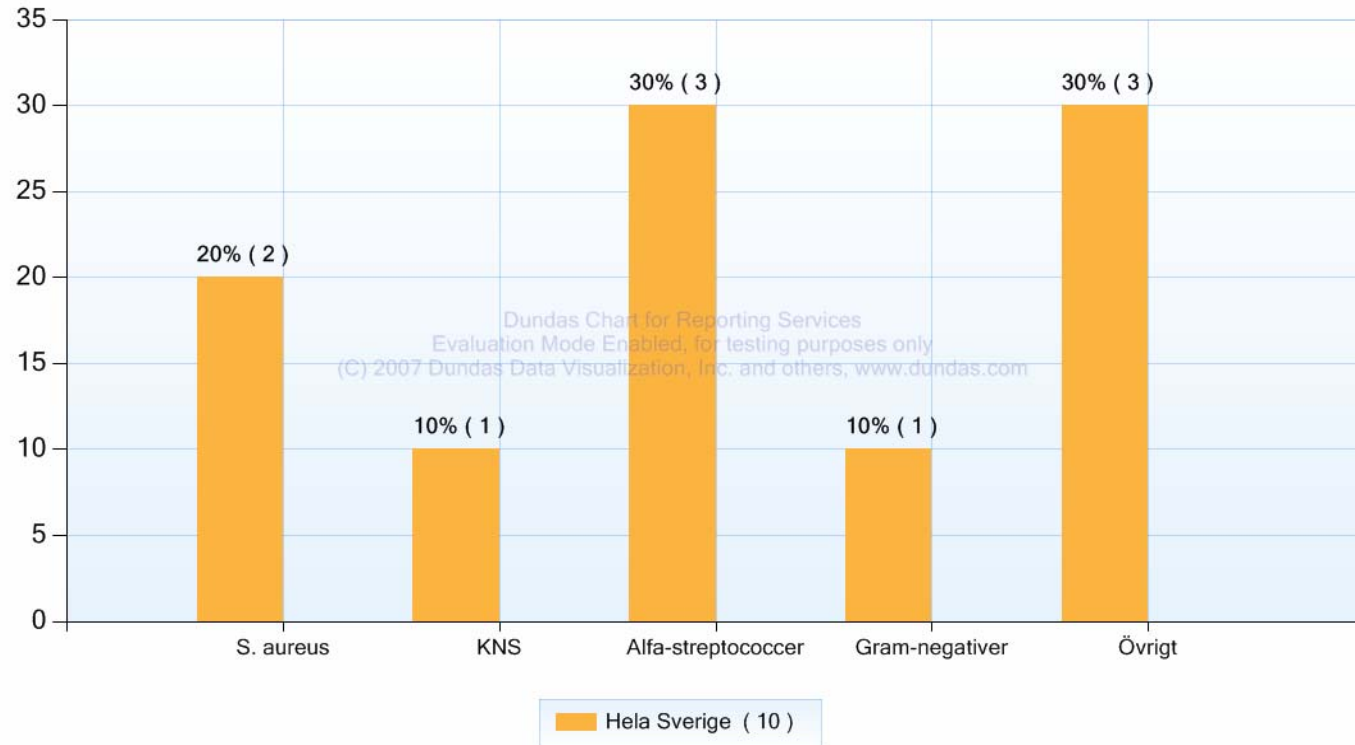
## Kirurgisk behandling



### Ledceller, antal (x10<sup>9</sup>)

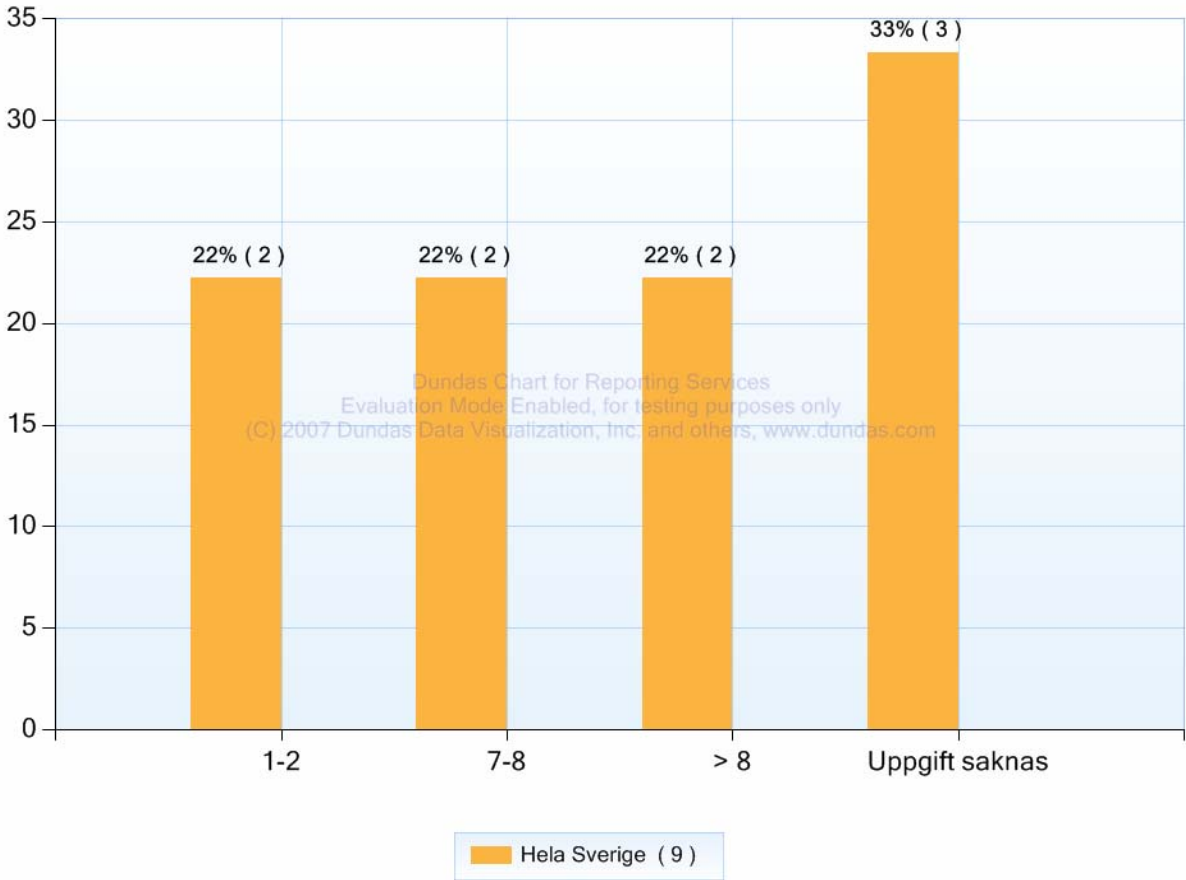


## Ledodling

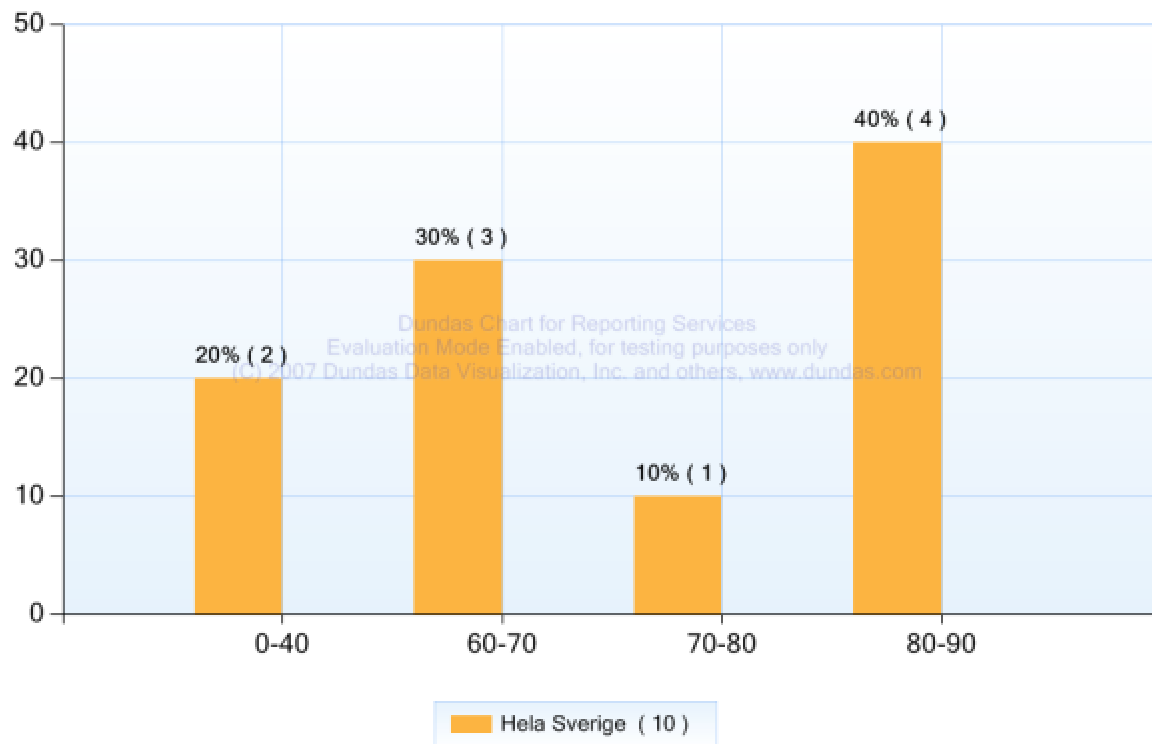




### Symptomduration (dygn)



## Ålderssammansättning



### Statistik för hela Sverige

<b>Min:</b>	12
<b>Max:</b>	88
<b>Median:</b>	71
<b>Medelvärde:</b>	67